

SNELLERS

ESTATE AGENTS



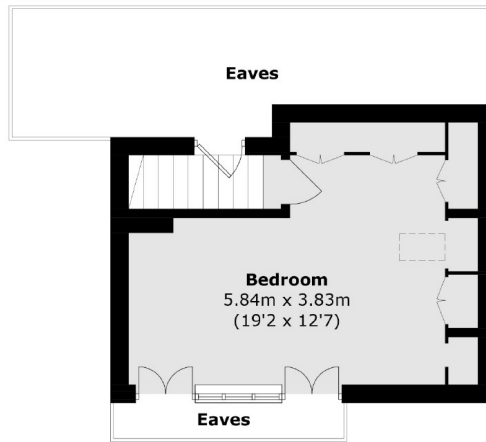
Rosecroft Gardens, TW2

£699,950

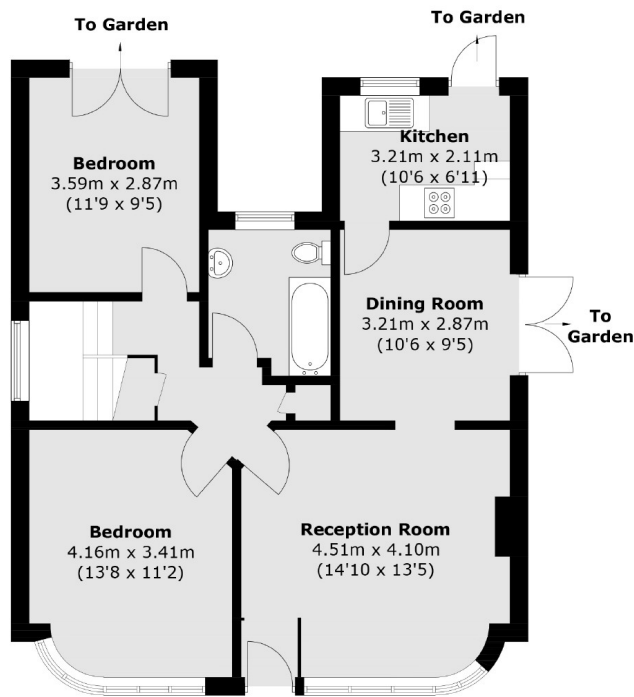
A delightful detached bungalow centrally located in the Rosebine development on a very large plot with double side access. The modern interior with new kitchen and bathroom is full of light with much larger than average rooms currently arranged as three beds and a reception dining room which opens onto a private sunny courtyard. The existing pp will enlarge it to 4 beds with en-suites (3 downstairs and a master on first floor) and a large kitchen reception at the rear which will still leave a large west facing garden. Private off street parking is easily accessed from Denehurst Gardens with potential for a garage and home office. A lovely house with great potential.

Rosecroft Gardens is situated within the ever popular Rosebine development and is close to many excellent schools within the Richmond Borough. Twickenham town centre is easily accessible and Whitton mainline station is under a mile away.

- Bungalow • No Onward Chain • Potential To Extend •
- Popular Location • Detached • Three Double Bedrooms •



First Floor



Ground Floor

Total area (approx.): 98.5 sq. m (1,060.3 sq. ft)
(Excluding Eaves)

Snellers Twickenham Sales
64-66 Heath Road
Twickenham
TW1 4BX
020 8892 5555
twickenhamsales@snellers.co.uk

Energy Rating: D We aim to make our particulars both accurate and reliable. However they are not guaranteed; nor do they form part of an offer or contract. If you require clarification on any points then please contact us, especially if you're traveling some distance to view. Please note that appliances and heating systems have not been tested and therefore no warranties can be given as to their good working order