



19 Corbetts Way

Thame, OX9 2FL

75% Shared Ownership £277,500

Welcome to this well presented and generously proportioned two-bedroom apartment, situated on the first floor at Windmill Place with views overlooking the charming communal garden. The property offers a bright and comfortable living space with an adjoining modern kitchen fitted with integrated appliances, including an oven, hob and washing machine.

Both bedrooms provide well-sized accommodation offering flexibility for residents or visiting guests. The apartment also benefits from a wet room with a level access shower designed for ease of use. A welcoming hallway provides additional storage cupboards, helping keep the home practical and organised.

Windmill Place is a thoughtfully designed development of 40 apartments offering independent living for the over-55s. The apartments are wheelchair accessible and include fitted kitchens and bathrooms with level-access showers. Residents benefit from a range of on-site facilities including: A 24-hour emergency alarm system that is manned by an onsite care team, comfortable communal lounge, Hobbies and activity room, Hair and beauty salon, Guest suite for visitors, Buggy store, Lift access to all floors, Laundry facilities Landscaped communal gardens and a Dedicated Community Manager.

Further information can be found here: <https://soha.co.uk/extra-care-housing/windmill-place/>

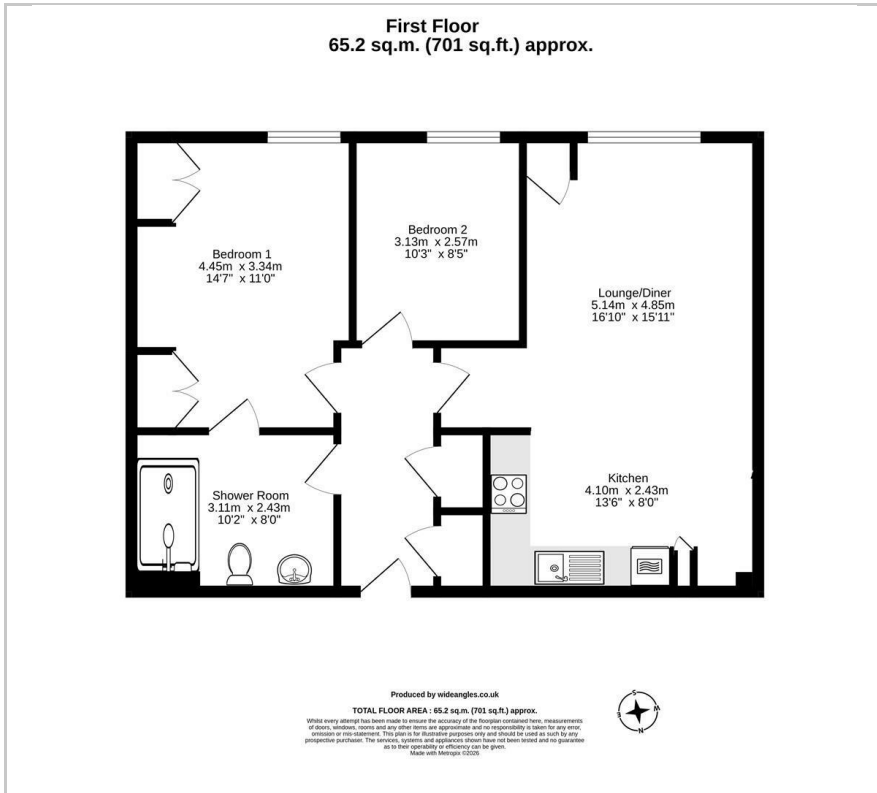
Located in the attractive market town of Thame in Oxfordshire approximately 9 miles east of Oxford and 7 miles southwest of Aylesbury. The town offers a charming historic setting with a strong independent retail scene along with a wide selection of pubs, restaurants and cafés.

Thame also benefits from excellent local amenities and hosts a popular weekly market, contributing to the town's vibrant community atmosphere.

- £0 rent on remaining 25% share
- Service charge £289.44 pcm approximately
- Ground rent £8.33 pcm approximately
- Thames Water charge £27.50 pcm approximately
- Core Care Charge £26.99 per week - 24 hour emergency alarm system alerting on site care team
- Spacious first floor 2 bedroom apartment
- Jack and Jill wet room with access from both the main bedroom and hallway
- Communal lounge and conservatory
- Over 55's scheme
- Hair and beauty salon onsite



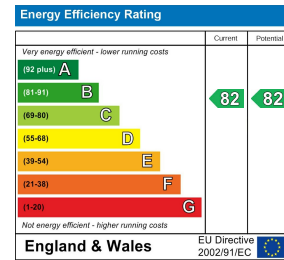
Floor Plan



Area Map



Energy Efficiency Graph



These particulars, whilst believed to be accurate are set out as a general outline only for guidance and do not constitute any part of an offer or contract. Intending purchasers should not rely on them as statements of representation of fact, but must satisfy themselves by inspection or otherwise as to their accuracy. No person in this firm's employment has the authority to make or give any representation or warranty in respect of the property.