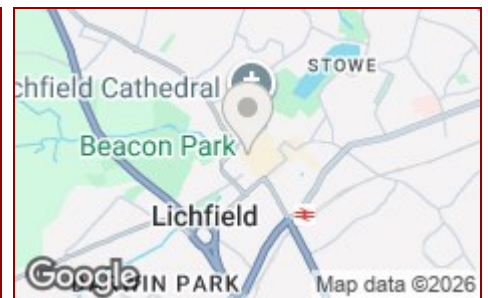


**£775 PCM**

**Jayman**  
www.jayman.co.uk

Lettings & Property Management



**Bird Street, Lichfield, Staffordshire WS13 6PR**

**£775 PCM**

- One bedroom apartment
- City centre feedback
- Allocated parking
- Council Tax B
- Spacious kitchen and diner
- Original features
- EPC C
- Available mid February 2026





## Kitchen/diner 14'9" x 14'5"

Spacious kitchen/diner with window to fore.  
With a range of storage cupboards, cooker and extractor fan.

## Lounge 16'4" x 16'0"

Large lounge with character ceiling beams. Includes the sofa.  
Electric heating and window to fore.

## Storage Cupboard

## Bedroom 15'8" x 9'10"

Good size master bedroom with walk in wardrobe. Includes bed.  
Character ceiling beams.  
Electric heating,

## Bathroom 7'6" x 3'11"

Suite comprising of w/c, hand basin and large shower.

## Parking

One parking space

## Location

Be advised this is located above Le Reve Cocktail bar on Bird Street in the centre of Lichfield.

## Lichfield

Located just north of Birmingham, Lichfield is a charming and historic Cathedral City known for its unique blend of heritage and contemporary living. With excellent transport links via both Lichfield City and Lichfield Trent Valley stations, commuting is effortless.

The city boasts an array of independent boutiques, bars, and restaurants, including the acclaimed Michelin-starred 'Upstairs by Tom Shepherd'. Lichfield also offers an impressive choice of primary and secondary schools, as well as a university campus, making it ideal for families, professionals, and investors alike.

## Are you a landlord with property to rent?

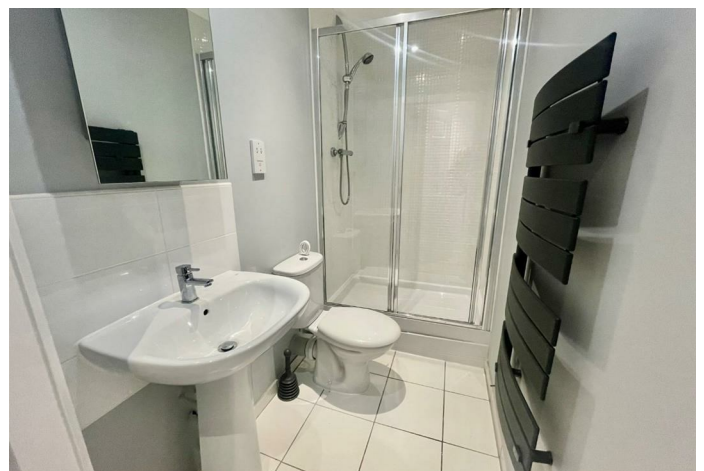
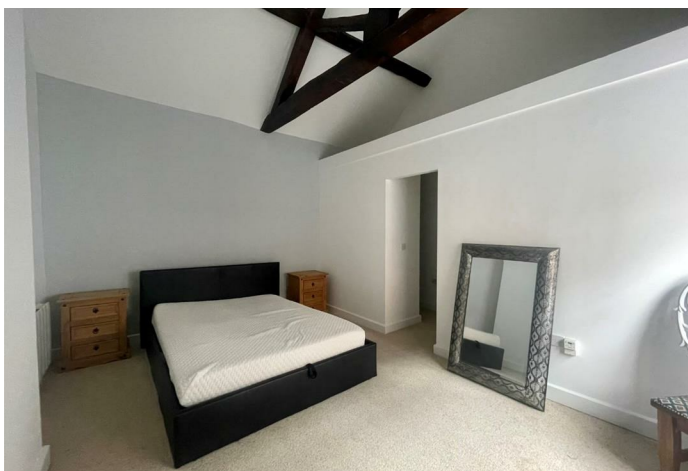
Let us take the hassle out of finding the right tenants.

Our professional lettings service is designed to match your property with top-quality, reliable renters quickly and efficiently. We pride ourselves on delivering outstanding customer service, keeping you informed at every step and tailoring our approach to suit your needs.

From thorough tenant screening to expert marketing and smooth move-ins, we're here to protect your investment and give you peace of mind. Trust us to treat your property like it's our own.

Please contact us on 01543 417 559 or email [lettings@jayman.co.uk](mailto:lettings@jayman.co.uk) and we will be happy to help you with a free rental valuation and advice on achieving the best rent for your property.

**REQUIRE A MORTGAGE?** Our independent advisor can compare "whole of market" to help find the best mortgage to suit your circumstances. Please call 01543 417 559 for a free mortgage quote including some deals only available through our network. **AGENTS DESCRIPTIONS** These details imply the opinion of the agent at the time these details were prepared and are subjective. It may be that the tenant's opinion may differ. **VIEWING ARRANGEMENTS** By appointment only with Jayman on 01543 417 559. **COUNCIL TAX** Please refer to [www.voa.gov.uk](http://www.voa.gov.uk) for this information. **DESCRIPTIONS AND MEASUREMENTS** All measurements are approximate and some may be maximum on irregular walls. The plan shows the approximate layout of the rooms to show the inter relationship of relationship of one room to another but is not necessarily to scale. **CONSENTS** We have not had sight of any relevant building regulations, guarantees or planning consents and all relevant documentation pertaining to this property should be checked by your legal advisor before exchanging contracts.



Energy Efficiency Rating		
	Current	Potential
Very energy efficient - lower running costs		
(92 plus) <b>A</b>		
(81-91) <b>B</b>		
(69-80) <b>C</b>		
(55-68) <b>D</b>		
(39-54) <b>E</b>		
(21-38) <b>F</b>		
(1-20) <b>G</b>		
Not energy efficient - higher running costs		

Environmental Impact (CO <sub>2</sub> ) Rating		
	Current	Potential
Very environmentally friendly - lower CO <sub>2</sub> emissions		
(92 plus) <b>A</b>		
(81-91) <b>B</b>		
(69-80) <b>C</b>		
(55-68) <b>D</b>		
(39-54) <b>E</b>		
(21-38) <b>F</b>		
(1-20) <b>G</b>		
Not environmentally friendly - higher CO <sub>2</sub> emissions		