



RUTHERFORD HOUSE, SW11

£500,000

Stylish 2 bedroom, 2 bathroom apartment set within the modern Rutherford House development in the heart of Battersea. Offering a bright open-plan living space, fully integrated kitchen, fitted wardrobes, private terrace and one parking space.

- 2 Bedroom / 2 Bathroom
- Private Terrace
- Bright Open-Plan
- Fully Integrated Kitchen
- One Parking bay
- Secure Cycle Storage

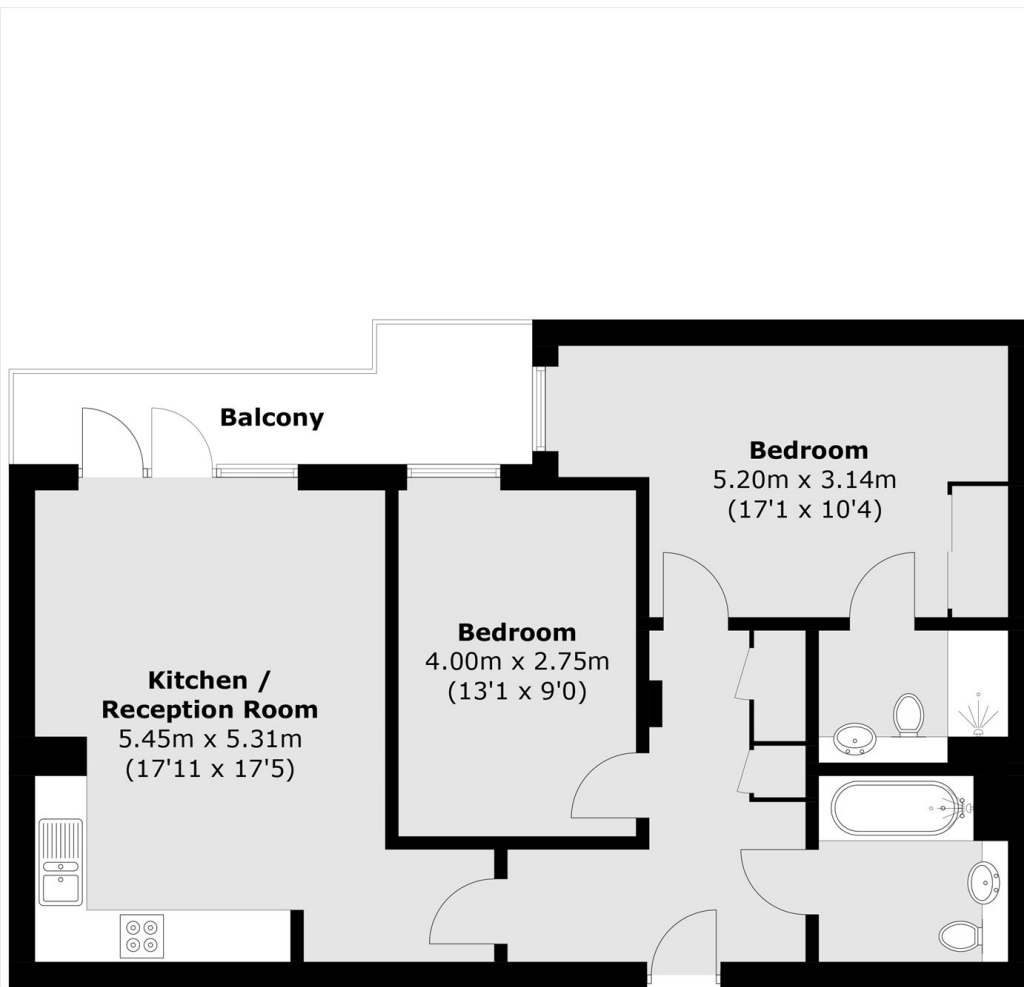


ABOUT THE HOME

Moments from Battersea Park, the River Thames and an excellent selection of shops, cafés and restaurants.







Total area (approx.): 70.8 sq. m (762.1 sq. ft)
Balcony: 7.3 sq. m (78.6 sq. ft)

LiFE RESIDENTIAL

11 Flagstaff House, London,
SW8 2LZ

Sales: 020 7476 1408

Lettings: 020 7582 7989

Energy Rating: B. We aim to make our particulars both accurate and reliable. However they are not guaranteed; nor do they form part of an offer or contract. If you require clarification on any points then please contact us, especially if you're traveling some distance to view. Please note that appliances and heating systems have not been tested and therefore no warranties can be given as to their good working order.