



DUMMY Curlew House 1 Hawser Lane, London, E14 0XZ

£620 Per week

 2
  2
  1
  B

Two bedroom apartment in the sought-after Heron Wharf development by Berkeley Group!

The property comprises of modern open plan kitchen and living area, luxury bathroom, great storage, two bedrooms and boasts a 64sq.ft balcony

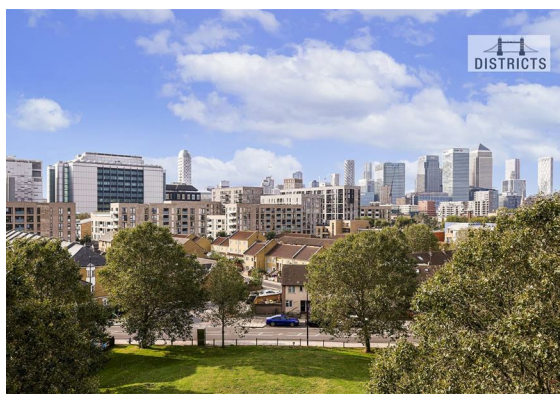
Located in Zone 2, on the banks of the River Lea just 1.7 miles from Canary Wharf.

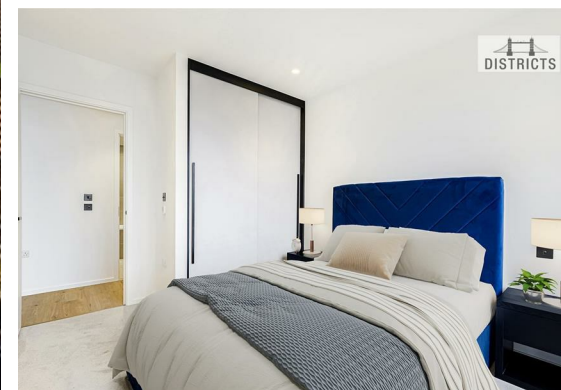
On foot, within 0.5 miles, 4 DLR stations - Langdon Park, East India, All Saints and Canning Town DLR/ Underground station. By bike, Canary Wharf can be reached in 12 minutes and Stratford in 16 minutes. Photos have been digitally staged and are of a similar apartment.

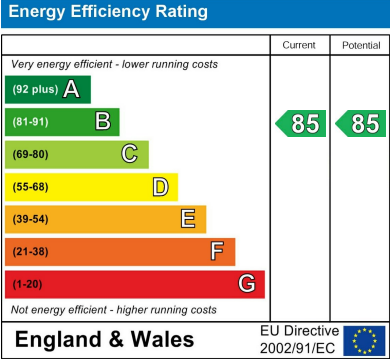
Council Tax Band: Tower Hamlets - E
Minimum contract: 12 months
Change of contract fee: £50 including VAT
Lift access | Cladding: EWS1 Certificate available
Holding Deposit - £620 (1 weeks rent, subject to agreed offer)

Electricity supply – Mains | Cold Water supply – Mains | Sewerage – Mains | Hot water, heating & comfort cooling – Mains | Internet: Fibre

To check broadband and mobile phone coverage please visit Ofcom.
To check planning permission please visit Tower Hamlets Council Planning & Building







These particulars, whilst believed to be accurate are set out as a general outline only for guidance and do not constitute any part of an offer or contract. Intending purchasers should not rely on them as statements of representation of fact, but must satisfy themselves by inspection or otherwise as to their accuracy. No person in this firms employment has the authority to make or give any representation or warranty in respect of the property.