



Junction Road, London, N19 5LB

**£3,200 PCM**

We are pleased to offer to rent this duplex three bedroom apartment on a furnished or unfurnished basis.

The apartment located on the third and fourth floors comprises three generous sized double bedrooms a kitchen/diner with separate reception room and a bathroom with bath and shower over. The property offers great views over Central London and the City.

The apartment is located within close walking distance of Archway tube station (Zones 2 & 3) which serves the Northern Line.

The property is bright and airy and close to many local amenities including Dartmouth Park & Hampstead Heath. In addition there are various schools close by as is The Whittington Hospital.

The property would suit either sharers or a family and is available early April 2026

- Three Double Bedroom Flat
- Reception Room with Separate Kitchen/Diner
- Close to Dartmouth Park
- Close to Archway Tube Station
- Furnished or Unfurnished
- Available Early April 2026

## VIEWING

Strictly by appointment with Susmans Estates

**Tel:** 01923 859444

**299 Watling Street**  
**Radlett**  
**WD7 7LA**

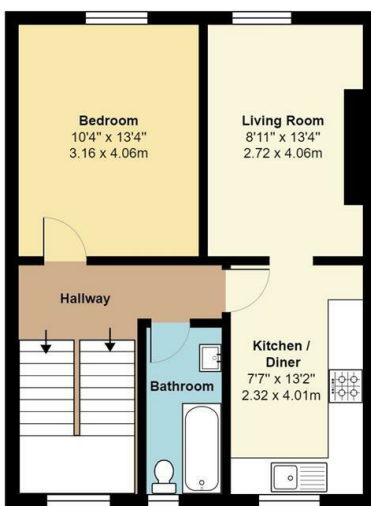
## E-mail:

[office@susmansestates.com](mailto:office@susmansestates.com)

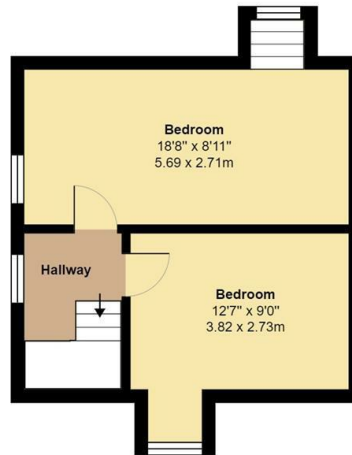
## Website:

[susmansestates.com](http://susmansestates.com)

Ref:



**Second Floor**  
Area: 535 ft<sup>2</sup> ... 49.7 m<sup>2</sup>



**Third Floor**  
Area: 362 ft<sup>2</sup> ... 33.6 m<sup>2</sup>



Total Area: 897 ft<sup>2</sup> ... 83.3 m<sup>2</sup>

All measurements are approximate and for display purposes only

