



10 Poplar Terrace, Douglas, Isle of Man, IM2 4AR
Asking Price £335,000

- Unique multi-level layout with flexible living spaces, ideal for modern lifestyles.
- Stylish open-plan kitchen and cosy lounge opening onto a private, astro-turfed garden.
- Spacious top-floor bedroom with ample storage and superb views over Douglas Promenade.



Spacious & Versatile Mid-Terrace Home with Stylish Interiors and Stunning Views

This deceptively spacious mid-terrace home has been thoughtfully updated throughout and boasts a unique, multi-level layout ideal for modern living. Set over four well-proportioned floors, the property offers a versatile arrangement of rooms to suit families, professionals, or those seeking adaptable spaces for home working or leisure.

The ground floor features two generous bedrooms, one with its own en-suite, complemented by a sleek shower room for guests or the second bedroom. The heart of the home is found on the lower ground floor, where a stylish open-plan dining kitchen flows seamlessly into a cosy lounge area. From here, double doors lead out to a sunny, astro-turfed garden—perfect for entertaining or enjoying quiet moments outdoors.

An additional room on this level offers fantastic flexibility, ideal as a home gym, cinema room, hobby space or home office.

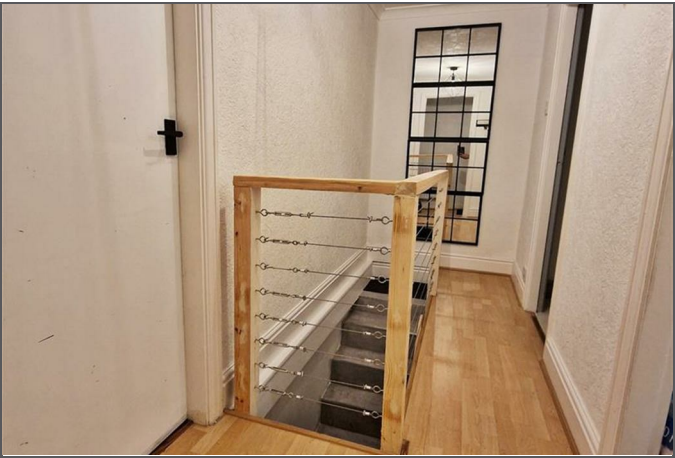
The first floor hosts a luxurious bathroom and separate dressing room, alongside a large front-facing room that has previously served as a living room but could easily become an impressive master bedroom suite. Rising to the top floor, you'll find a spacious bedroom with excellent storage and far-reaching views across Douglas Promenade.

Outside, the property enjoys a welcoming front terrace—perfect for morning coffee—and a private, low-maintenance rear garden, offering peace and seclusion.

This beautifully presented home perfectly balances charm, functionality, and modern style in an elevated position. Internal viewing is essential to appreciate the scale, flexibility, and lifestyle it offers.

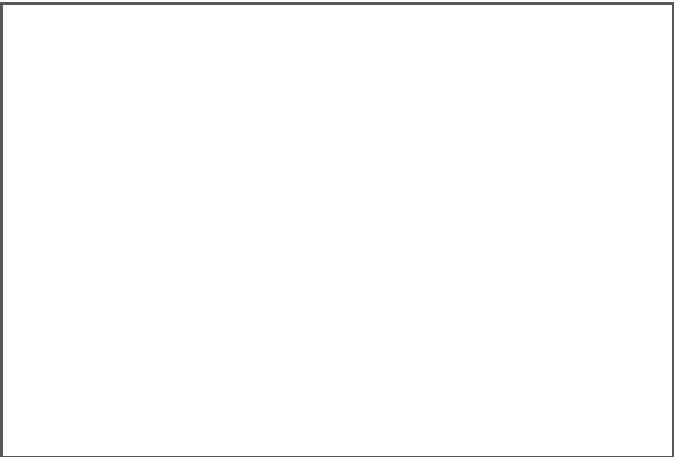








10 Poplar Terrace, Douglas, Isle of Man, IM2 4AR



10 Poplar Terrace, Douglas, Isle of Man, IM2 4AR





DOUGLAS

37 VICTORIA STREET
DOUGLAS
ISLE OF MAN IM1 2LF

T 01624 620606

F 01624 677363

E info@deanwood.co.im

CASTLETOWN

COMPTON HOUSE
9 CASTLE STREET CASTLETOWN
ISLE OF MAN IM9 1LF

T 01624 825995

F 01624 825996

E castletown@deanwood.co.im

RAMSEY

LEZAYRE HOUSE
87 PARLIAMENT STREET
RAMSEY ISLE OF MAN IM8 1AQ

T 01624 816111

F 01624 816588

E ramsey@deanwood.co.im

These particulars are for information purposes only. They do not constitute or form any contract nor should any statement contained herein be relied upon as a representation of fact. Neither the vendor nor DeanWood Agencies Limited ('the firm'), nor any officer or employee of the firm accept liability or responsibility for any statement contained herein. The vendor does not by these particulars, nor does the firm, nor does any officer or any employee of the firm have any authority to make or give any representation or warranty whatsoever as regards the property or otherwise. It is the sole responsibility of any person interested in the property described in these particulars to make all proper enquiries and searches to verify the description of the property and all other particulars herein.

FOR MORE PROPERTIES VISIT OUR WEBSITE @ [deanwood.im](https://www.deanwood.im)