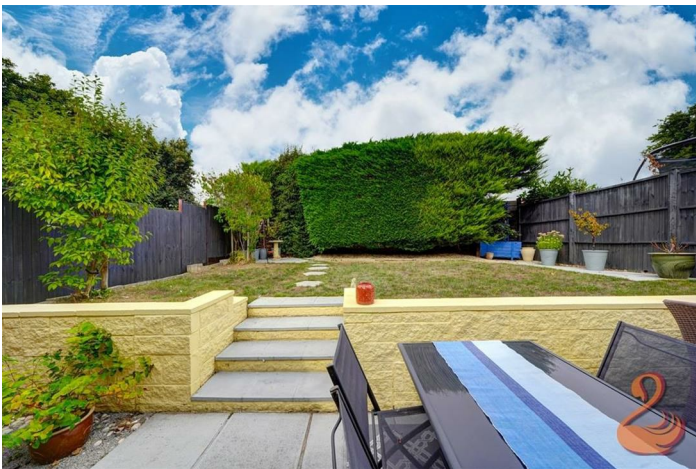


CUL-DE-SAC LOCATION



Bungalow - Detached (EPC Rating: D)

**SYCAMORE AVENUE, EVESHAM,  
WR11 1YE**

**£1,150 PCM**

**AVON**  
ESTATES  
SALES & LETTINGS

2 1 1 D

# 2 Bedroom Bungalow - Detached located in Evesham

**\*\* FULLY BOOKED FOR VIEWINGS \*\*** Located on Sycamore Avenue in Evesham, this delightful detached bungalow offers a perfect blend of comfort and modern living. With a motivated vendor ready to sell. This property offers two well-proportioned bedrooms and is ideal for small families, couples, or those seeking a peaceful retirement retreat.

Upon entering, you are welcomed into a spacious lounge/diner, which provides an inviting space for relaxation and entertaining. The modern kitchen is thoughtfully designed, featuring contemporary fittings that make cooking a pleasure. The layout of the bungalow ensures a seamless flow between the living areas, creating a warm and welcoming atmosphere.

The property boasts a well-maintained private garden, perfect for enjoying the outdoors, whether it be for gardening enthusiasts or simply for unwinding in a tranquil setting.

This two-bedroom semi-detached bungalow is not just a house; it is a place where memories can be made. With its desirable location in Evesham, you will find yourself close to local amenities, parks, and transport links, making it an excellent choice for those looking to enjoy a balanced lifestyle.

In summary, this charming bungalow on Sycamore Avenue presents a wonderful opportunity for anyone seeking a comfortable and modern home in a lovely community. Do not miss the chance to make this delightful property your own.

Council Tax Band - C

Energy Performance Rating - D

Available Beginning of June 2026.

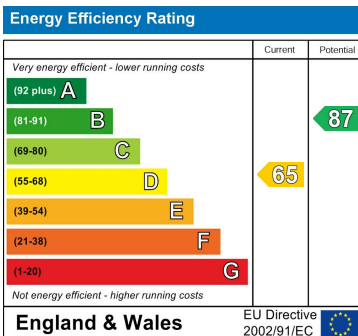
Deposit: £1,325.00, which is returnable in full subject to the satisfactory condition of the property at the end of the term.

Holding Deposit - £265.00 (no VAT) may be requested to secure a property (subject to references, contract & landlords approval). Non-refundable if the tenant withdraws. Otherwise used towards first rent or deposit, after signing the tenancy agreement.



Council Tax Band = C

Energy Performance Graph =D



Call us on

**01386 257180**

[sales@avonestates.net](mailto:sales@avonestates.net)

[www.avonestates.net](http://www.avonestates.net)

Agents Note: Whilst every care has been taken to prepare these particulars, they are for guidance purposes only. All measurements are approximate and are for general guidance purposes only and whilst every care has been taken to ensure their accuracy, they should not be relied upon and potential buyers are advised to recheck the measurements.