

The Overview

Property Name:
Heol Cilffrydd, Barry

Price:
£950 Per Calendar Month

Qualifier:
Per Calendar Month



The Bullet Points

- Two double bedrooms
- Built-in wardrobes
- Open-plan living space
- Allocated parking
- Available immediately
- En-suite to master bedroom
- Two balconies
- Sea views
- Sought-after waterfront location
- Early viewing is highly recommended



The Main Text

Household Income to be considered for referencing: £28,500+

A well-presented two-bedroom apartment ideally located on the sought-after waterfront in Barry, offering modern living with coastal surroundings.

Upon entering the property, you are welcomed by a spacious entrance hall complete with a convenient storage cupboard positioned just inside the front door.

The apartment comprises two generous double bedrooms, both benefiting from access to their own private balconies. The master bedroom further features built-in wardrobes and a stylish en-suite shower room.

The heart of the home is the open-plan living, dining, and kitchen area, designed for both comfort and practicality. This bright and airy space opens out onto a balcony, enjoying pleasant sea views, perfect for relaxing or entertaining.

Additional benefits include allocated parking and a fantastic location close to local amenities, transport links, and scenic waterfront walks.

Additional Information

Household Income to be considered for referencing: £28,500+

Please note: Applicants must have no active CCJs or IVAs to meet referencing criteria. Unfortunately, applications that do not meet these standards may result in an unsuccessful reference check and forfeiture of the holding deposit.

Option for 0% Deposit

Local Area

Situated on the popular Barry waterfront, the property benefits from a vibrant coastal setting with a range of nearby amenities including cafés, restaurants, supermarkets, and leisure facilities. The area is perfect for those who enjoy scenic walks along the waterfront and beach, while still being within easy reach of Barry town centre.

Transport Links

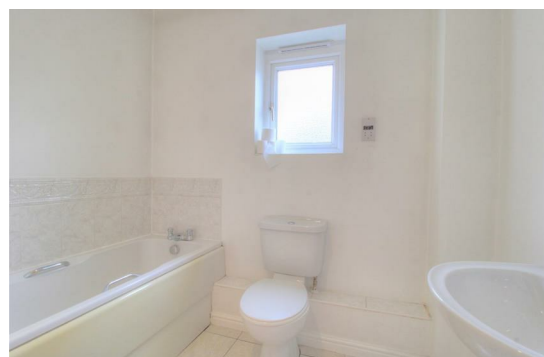
The property is well-connected, with nearby train stations such as Barry Docks railway station and Barry railway station providing direct links into Cardiff city centre. Excellent road links via the A4050 and M4 corridor make commuting across South Wales straightforward.

Schools

The property is within proximity to a selection of well-regarded schools including High Street Primary School and Whitmore High School, making it suitable for families as well as professionals looking to settle in the area.

The Photographs

We have allowed space for up to 48 photographs across the next four pages. If fewer images are required, not all spaces will be used.



The Photographs

We have allowed space for up to 48 photographs across the next four pages. If fewer images are required, not all spaces will be used.

The Photographs

We have allowed space for up to 48 photographs across the next four pages. If fewer images are required, not all spaces will be used.

The Photographs

We have allowed space for up to 48 photographs across the next four pages. If fewer images are required, not all spaces will be used.

