



REGENT
ESTATES

WESTWING, HOME FARM, NORTHCHURCH

£425,000 Freehold

ACCOMMODATION

Regent Estates are delighted to present this beautiful two-bedroom mews-style property, located within a charming converted stable block and ideally positioned within easy walking distance of local shops and amenities.

Finished to a superb standard throughout, the accommodation comprises two bedrooms, a family bathroom, an open-plan lounge/dining area, and a fully fitted kitchen. The property also benefits from a lovely enclosed garden, perfect for relaxing or entertaining.

Further features include allocated off-road parking. The property is available unfurnished.

Annual estate service charge: £1,033.04.

This superb property is situated in a popular residential location within walking distance of public transport, local shops and the village bakery/café.

Northchurch village is just a short distance from the historic market town of Berkhamsted which offers excellent shopping, sporting and educational facilities. For commuters, the mainline station provides a fast and frequent service to London (Euston) and the A41 bypass gives easy access to the M25 and M1.

LOCATION

OUTSIDE

IMPORTANT NOTICE

1. These sales particulars have been prepared from information supplied by the vendors and information collated by Regent Estates.
2. Confirmation has been sought from the vendors to confirm these particulars accuracy.
3. All measurements given have a tolerance of 3" in accordance with RICS Code of Measuring Practice.
4. None of these appliances, plumbing or electrics mentioned within these particulars have been tested by ourselves, prospective purchasers are urged to check their condition before entering in to purchase.

VIEWING

Strictly by appointment through Regent Estates.

01442 877878
141-143 High Street, Berkhamsted, Herts,
HP4 3HH

Email: info@regent-estates.com
www.regent-estates.com

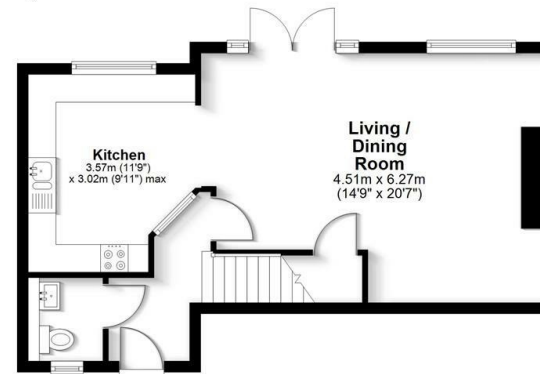






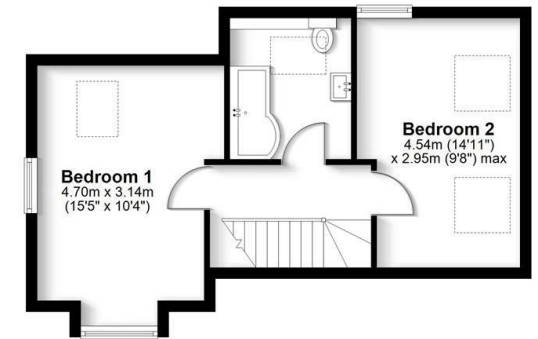
Ground Floor

Approx. 44.2 sq. metres (475.5 sq. feet)



First Floor

Approx. 39.0 sq. metres (419.7 sq. feet)



Total area: approx. 83.2 sq. metres (895.2 sq. feet)

FOR ILLUSTRATIVE PURPOSES ONLY - NOT TO SCALE
The position and size of doors, windows, appliances and other features are approximate only. Total area includes garages and outbuildings - Unauthorised reproduction prohibited.
Plan produced using PlanUp.

**REGENT
ESTATES**

TELEPHONE: 01442 877878
141-143 High Street, Berkhamsted,
Herts, HP4 3HH
Email: info@regent-estates.com
www.regent-estates.com