



Connells

Rossall Drive
Paignton



Property Description

Guide price £250,000 - £260,000 Connells are delighted to bring to the market this charming and exceptionally well-maintained two-bedroom bungalow, ideally positioned close to the heart of Paignton town centre while benefiting from a peaceful and quiet setting on approach. This delightful home offers comfortable, single-level living combined with thoughtfully designed interior spaces and a beautifully landscaped garden, making it an ideal choice for a wide range of buyers.

On Entrance & Porch

From the outset, it is clear that this property has been lovingly cared for over the years. The bungalow is set back from the road and benefits from a private driveway providing convenient off-road parking, along with attractive front gardens that enhance its kerb appeal. A pathway leads to the front entrance, where you are welcomed into a practical porch area, ideal for storing coats, shoes, and everyday essentials while keeping the main living areas clutter free.

Hallway

Stepping through into the main hallway, you immediately get a sense of the layout and flow of the property. The hallway acts as a central hub, with doors leading to all principal rooms, allowing for easy and accessible living throughout. The space feels bright and welcoming, setting the tone for the rest of the home.

Lounge

The lounge is a light and airy room, offering generous proportions and ample space for a variety of furniture arrangements. Large windows allow natural light to flood the room, creating a warm and comfortable atmosphere that is perfect for relaxing or entertaining guests. Whether enjoying a quiet evening in or hosting family and friends, this room provides a versatile and inviting living space.

Bedroom One

Both bedrooms are well-sized doubles, offering flexibility to suit a variety of needs. The master bedroom is positioned to the rear of the property and enjoys pleasant views over the garden, providing a peaceful and private retreat. There is ample space for bedroom furniture, including wardrobes, bedside tables, and additional storage if required.

Bedroom Two

The second bedroom is also a generous double and overlooks the front garden. This room would make an excellent guest bedroom, home office, or hobby room, depending on individual requirements.

Shower Room

The shower room has been beautifully presented and is both practical and stylish. Designed with convenience in mind, it features a modern walk-in shower, contemporary fittings, and a clean, well-finished layout that perfectly complements the bungalow's single-level living. This space is ideal for everyday use and caters well to those seeking easy accessibility.

Kitchen & Breakfast Room

One of the standout features of this home is the extended kitchen and dining room. This well-planned space has been designed to combine functionality with comfort, making it the heart of the home. The kitchen benefits from built-in appliances and an abundance of storage and worktop space, providing everything needed for day-to-day cooking or more ambitious culinary pursuits. There is also ample room for a dining table, making it an ideal spot for family meals, entertaining, or simply enjoying breakfast while overlooking the garden. The double-aspect design allows plenty of natural light to flow through, further enhancing the sense of space.

Conservatory

Leading from the kitchen/dining area is the sunroom, a wonderful additional living space that can be enjoyed throughout the year. With views across the rear garden, this room provides a tranquil setting to relax, read, or enjoy a morning coffee while taking in the outdoor surroundings. It also offers excellent flexibility, lending itself to a variety of uses depending on lifestyle needs.

Outside

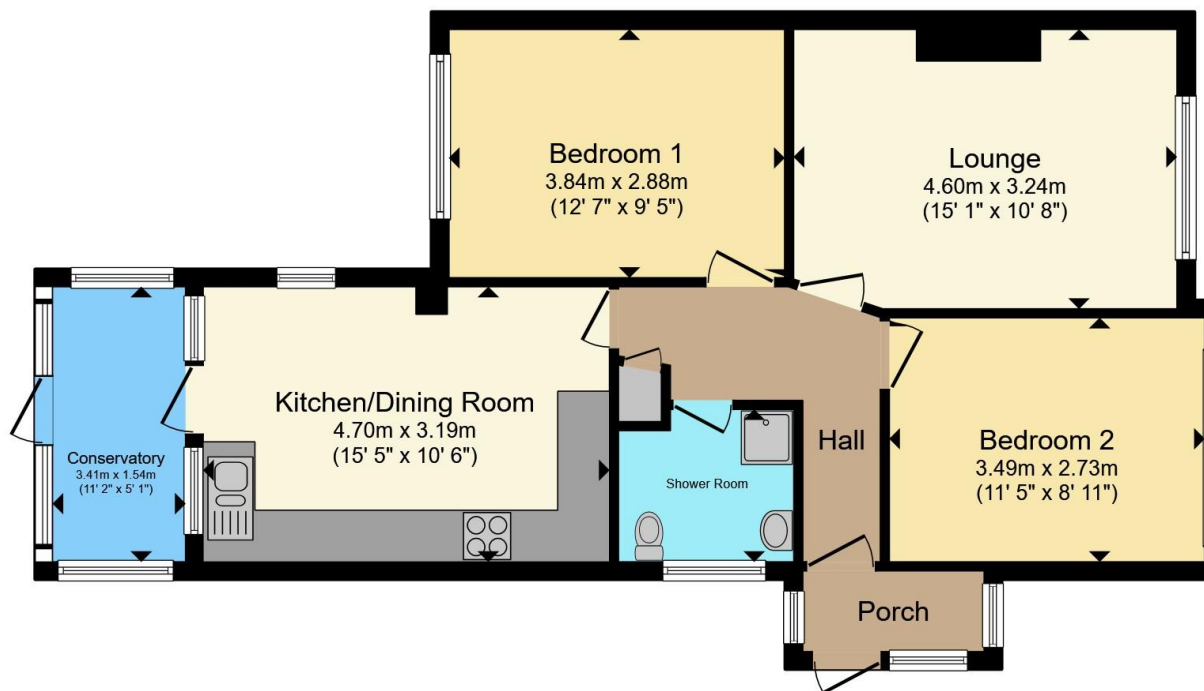
Outside, the rear garden is truly a joy and has clearly been designed with care and thought. The landscaped garden features a variety of zones, making it both practical and visually appealing. There are stone areas and patio spaces ideal for outdoor seating and entertaining, alongside raised beds and shrub borders that add colour and interest throughout the seasons. Hidden vegetable borders provide the perfect opportunity for keen gardeners to grow their own produce, while still maintaining a neat and organised appearance.

An additional highlight is the summerhouse, which is currently used as a craft room or gym. This versatile space offers endless possibilities, whether as a home office, studio, hobby room, or simply somewhere to unwind. The garden as a whole offers a high degree of privacy and is perfect for those who enjoy spending time outdoors, gardening, or entertaining.









Floor Plan

Total floor area 69.6 m² (749 sq.ft.) approx

This floor plan is for illustrative purposes only. It is not drawn to scale. Any measurements, floor areas (including any total floor area), openings and orientation are approximate. No details are guaranteed, they cannot be relied upon for any purpose and they do not form part of any agreement. No liability is taken for any error, omission or misstatement. A party must rely upon its own inspection(s). Powered by www.propertybox.io

Connells

To view this property please contact Connells on

T 01803 400 888
E paignton@connells.co.uk

51 Hyde Road
PAIGNTON TQ4 5BP

EPC Rating: C Council Tax
Band: C

Tenure: Freehold

view this property online connells.co.uk/Property/PGN313349



1. MONEY LAUNDERING REGULATIONS Intending purchasers will be asked to produce identification documentation at a later stage and we would ask for your co-operation in order that there will be no delay in agreeing the sale. 2. These particulars do not constitute part or all of an offer or contract. 3. The measurements indicated are supplied for guidance only and as such must be considered incorrect. Potential buyers are advised to recheck measurements before committing to any expense. 4. We have not tested any apparatus, equipment, fixtures, fittings or services and it is in the buyers interest to check the working condition of any appliances.

Connells Residential is registered in England and Wales under company number 1489613, Registered Office is Cumbria House, 16-20 Hockliffe Street, Leighton Buzzard, Bedfordshire, LU7 1GN. VAT Registration Number is 500 2481 05.

See all our properties at www.connells.co.uk | www.rightmove.co.uk | www.zoopla.co.uk

Property Ref: PGN313349 - 0003