

## Park Road, Bromley, BR1

Guide Price £300,000 - £325,000

1 1 1



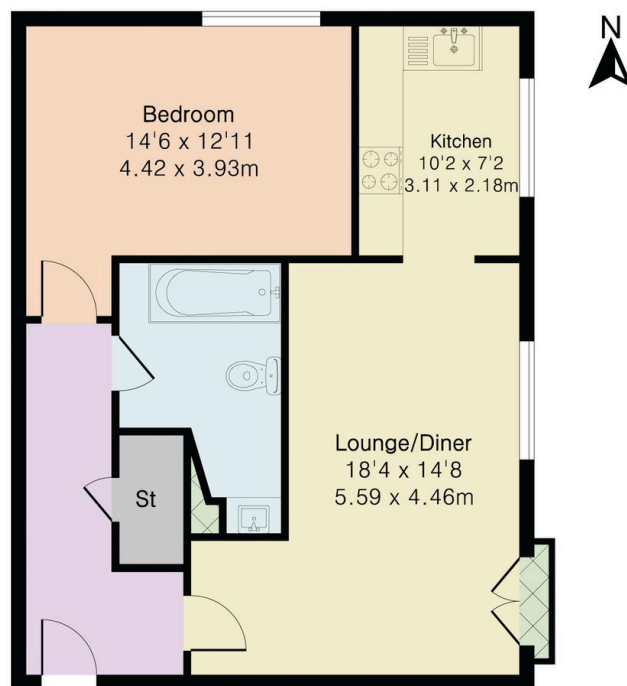
Please Quote Ref TH0310 For All Enquiries - GUIDE PRICE £300,000-£325,000 - Stunning one bedroom second floor apartment (628 Sq.Ft) with off street parking and access to well maintained communal gardens, ideally located in a quiet mews location in the heart of Bromley, close to fantastic transport links and amenities. Set within an impressive and striking Grade II listed development, the property offers a wealth of character charm and appeal, with bright and spacious accommodation boasting stylish interiors and quality finish throughout. Features include a wonderful open plan reception/kitchen, modern bathroom, electric heating, inbuilt storage, quality floor coverings and neutral decor.



## Key Features

- Please Quote Ref TH0310 For All Enquiries
- Grade II Listed Development with Enormous Character Appeal
- Light and Spacious Open Plan Reception/ Kitchen
- Communal Gardens
- Close to Bromley North and South Stations
- Stunning One Bedroom Second Floor Apartment (628 Sq.Ft)
- Stylish Interiors and Neutral Finish
- Modern Bathroom
- Off Street Parking
- Easy Access Shops and Amenities

**Approximate Gross Internal Area 628 sq ft - 58 sq m**



Second Floor

