

Aerodrome Road, NW9 £425,000

A larger than average two double bedroom apartment located within the luxurious Beaufort Park development. This spacious property comes with two bathrooms, a private parking space, a private balcony and will be sold chain free.

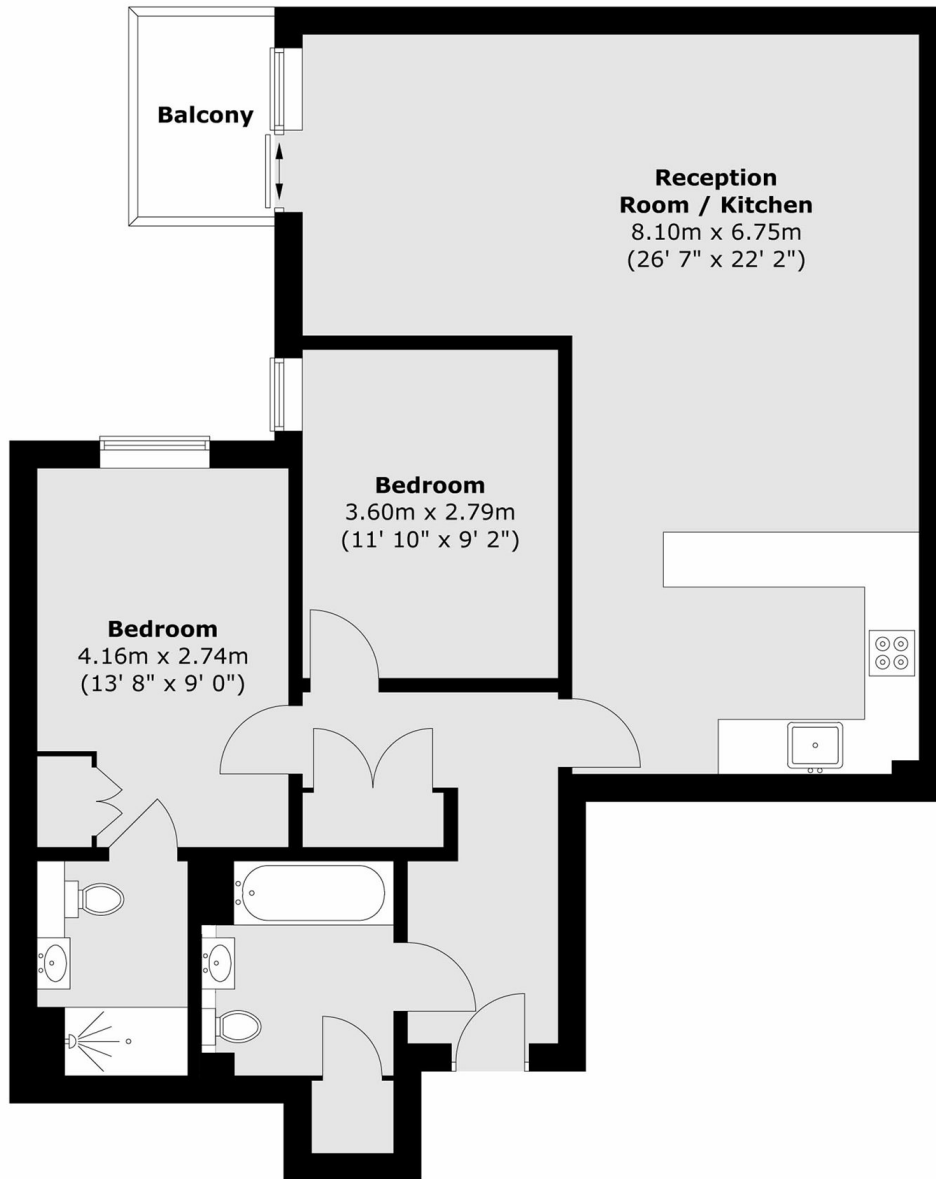
Situated in the heart of Colindale, and just moments from Colindale tube station (Northern Line) as well as numerous eateries, shops and other local amenities. Includes access to on-site members only gym/spa.

Features

- Two Double Bedrooms
- Private Secure Parking Space
- Two Bathrooms
- Spacious
- Luxury Spa & Gym
- Private Balcony

Aerodrome Road,
London, NW9

Fourth Floor



Total area (approx.) : 83.7 sq. m (901 sq. ft)
Total balcony area (approx.) : 3.3 sq. m (35 sq. ft)