



WHERE STANDARDS MATTER

Spencer Munson
128 High Road
Loughton IG10 4BE

Tel: 020 8502 2222

loughton@spencermunson.co.uk
Website: spencermunson.co.uk



Willow Tree Close, Abridge, Romford, RM4

****TWO BEDROOM END OF TERRACE HOUSE** **TWO DOUBLE BEDROOM** ** CLOSE TO SHOPS AND AMENITIES ** ** RECEPTION AND CONSERVATORY** ** FITTED KITCHEN** **DOWNSTAIRS W/C** ** NEW BATHROOM SUITE ** ** REDECORATED THROUGHOUT ** ** AVAILABLE NOW ON A MINIMUM 12 MONTHS TENANCY ** ** EPC RATING C ** ** COUNCIL TAX BAND E****

Rent: £1,695 - Monthly



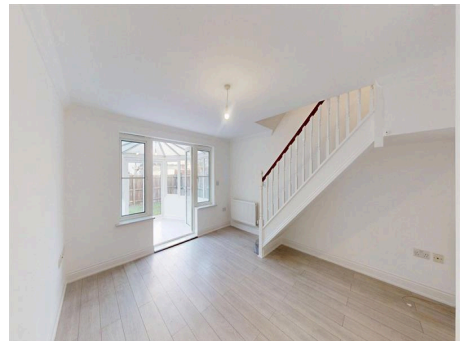
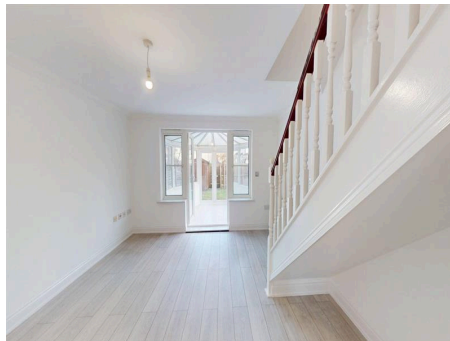
Willow Tree Close, Abridge, Romford, RM4



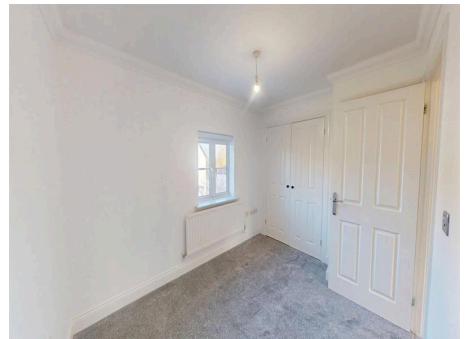
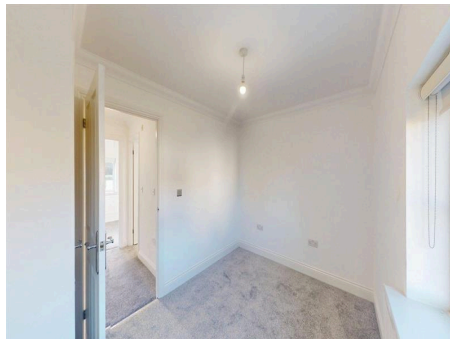
Kitchen



Reception 1



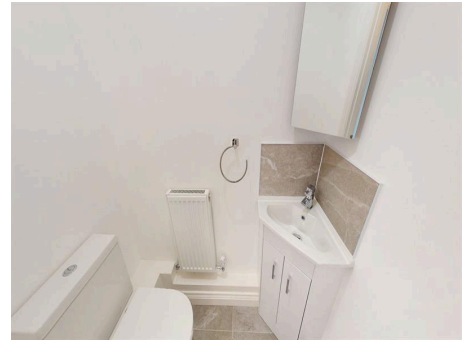
Bedroom 1



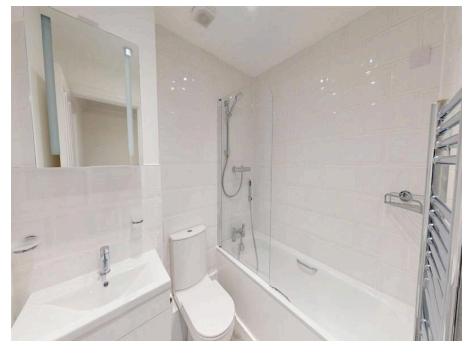
Bedroom 2



W/C



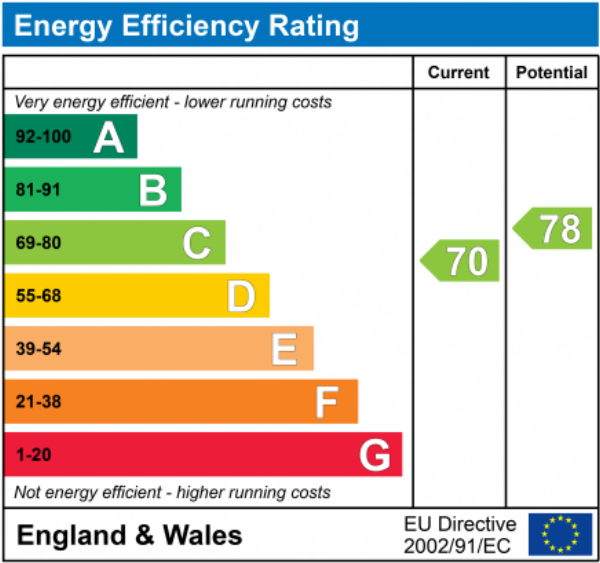
Bathroom 1



Willow Tree Close, Abridge, Romford, RM4

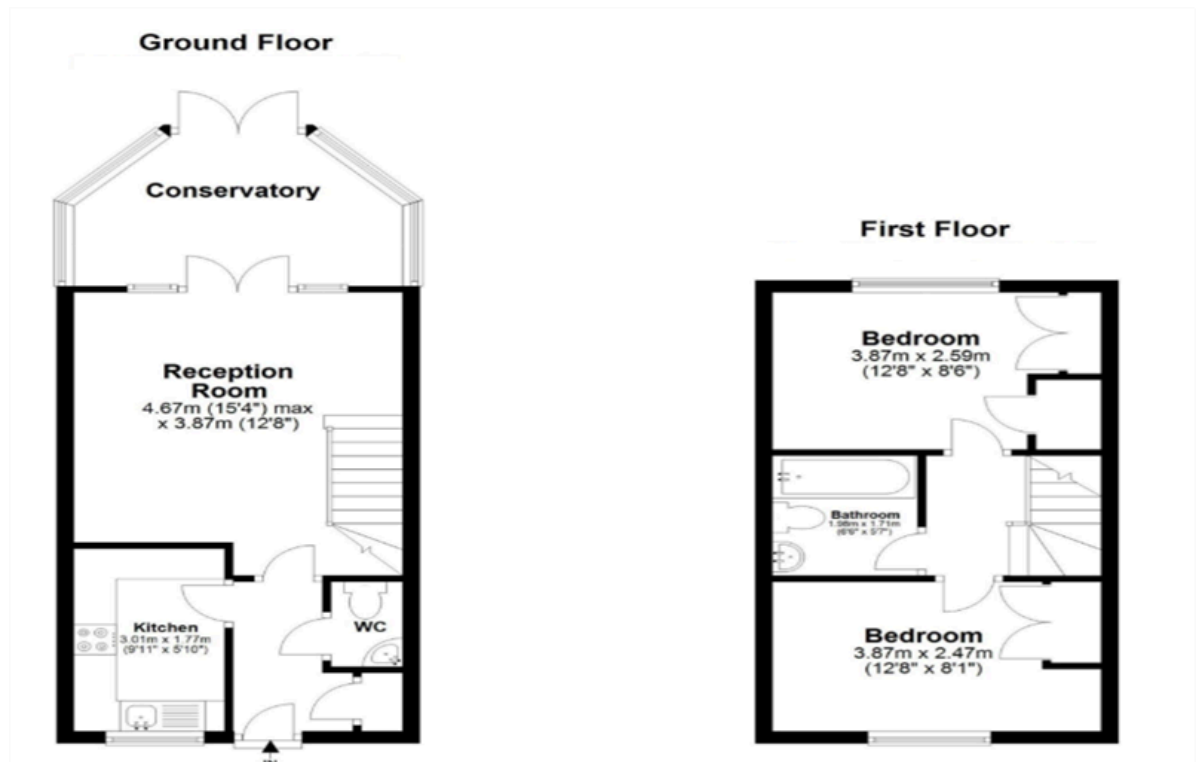


Parking



Spencer Munson is pleased to offer you this newly decorated two bedroom end of Terraced property Situated in a location just behind the main village square of Abridge. The property is walking distance to all local amenities and is only a short drive to Theydon Bois Underground station giving a lovely village lifestyle whilst having direct links to London nearby. The property comprises of a fitted kitchen, a good sized reception room with a conservatory, a newly fitted downstairs W.C, Upstairs you have two double bedrooms and a new bathroom suite. One Allocated parking. This property is Available now on a minimum 12 months tenancy. EPC Rating C Council Tax Band E

Willow Tree Close, Abridge, Romford, RM4



Disclaimer

These particulars are intended to give a fair and substantially correct overall description for the guidance of intending tenants/purchasers and do not constitute an offer or part of a contract. Prospective tenants/purchasers and/or lessees should seek their own professional advice. All descriptions, dimensions, reference to condition, fixtures, fittings and necessary permissions for use and occupation and other details are given in good faith and are believed to be correct. However, intending tenants/purchasers should not rely on them as statements or representations of fact, but must satisfy themselves by inspection or otherwise as to the correctness of each of them. Fixtures and fittings shown in pictures and on viewings may well not be included in any tenancy/sale and any prospective tenant/purchaser must clarify this for themselves. All measurements and floorplans are approximate and produced as a guide in good faith. Please note that some of the furniture and decor items shown in these images have been digitally added using AI technology for illustrative purposes. The actual property may differ in appearance. Prospective buyers or renters are encouraged to visit the property in person to get an accurate representation.