



## St. Marys Road, NW10 £500,000

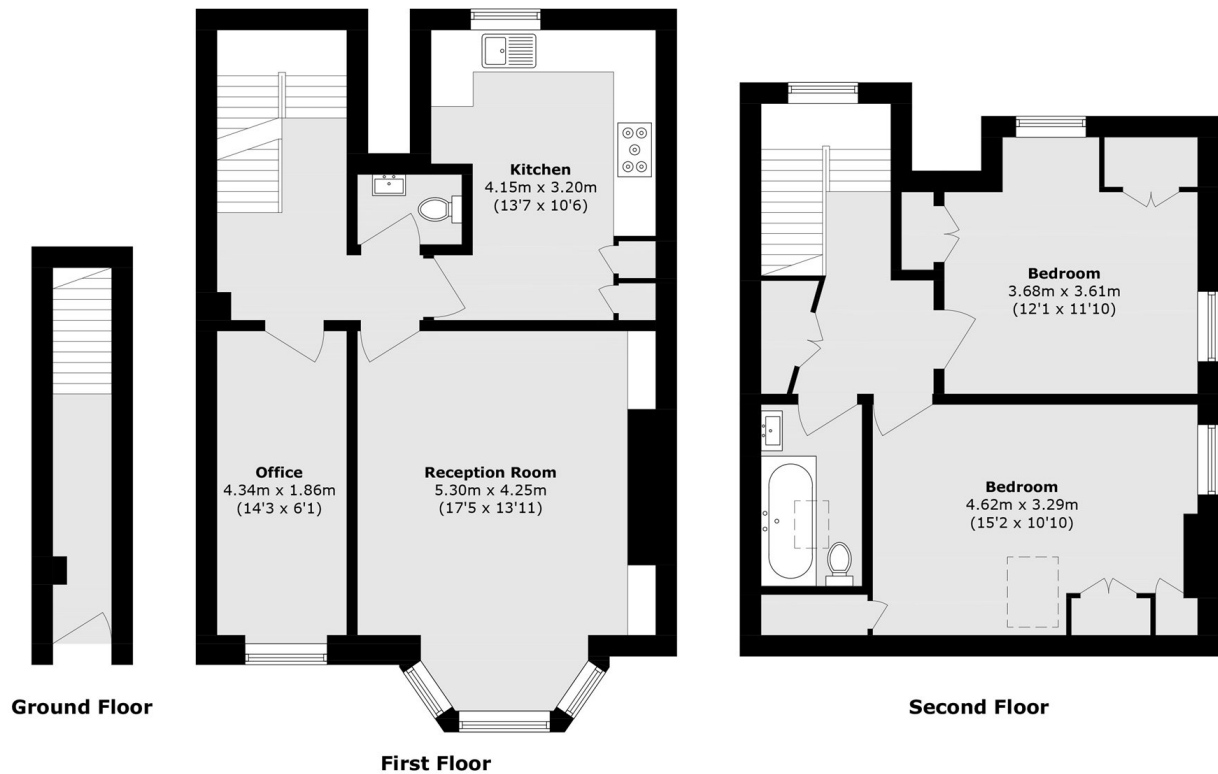
A beautifully presented first floor maisonette spanning over 1,100 sq ft, offering three generous bedrooms, a spacious reception room with a bay window, a three-piece family bathroom, an additional guest WC, and a large eat-in kitchen.

Conveniently located close to Roundwood Park and Harlesden's vibrant high street, with excellent transport links including the Bakerloo Line nearby, as well as easy access to major road links such as the A406.

### Features

- Three Bedrooms
- Top Floor Maisonette
- Guest WC
- Excellent Condition
- Close to Roundwood Park
- Transport Links Nearby

St. Marys Road,  
London, NW10



Total area (approx.): 102.2 sq. m (1100.1 sq. ft)