



3703

# LANDMARK EAST TOWER

CANARY WHARF E14

# 3703

## LANDMARK EAST TOWER

---

Positioned high above Marsh Wall in the heart of Canary Wharf, this impressive three-bedroom apartment enjoys striking panoramic London views and exceptional natural light through floor-to-ceiling glazing. Offering 1,432 sq ft of beautifully finished accommodation with two sleek bathrooms, it balances generous proportions with a calm, contemporary aesthetic. Residents benefit from lift access, an on-site gym and a private balcony — ideal for morning coffee or evening entertaining against the skyline. Available to rent at £4,489 per month, this is refined city living in one of London's most connected waterside neighbourhoods.



# 3703

## LANDMARK EAST TOWER

MARSH WALL, CANARY WHARF

An exceptional three-bedroom apartment offering bright, modern living. The generous open-plan reception and kitchen, with doors to a balcony, provides a superb entertaining space. A principal bedroom features built-in storage and an en-suite shower room, while two further bedrooms share a contemporary bathroom. The apartment also includes a practical hall area with integrated storage, 24/7 concierge and a residents gym delivering stylish, low-maintenance urban living in the luxurious Landmark Tower development.



3 BEDS



2 BATHS



1,432 SQFT



1 RECEPTION



EPC: B (83)



C.TAX: G (£2,924 pa)

RENTAL PRICE

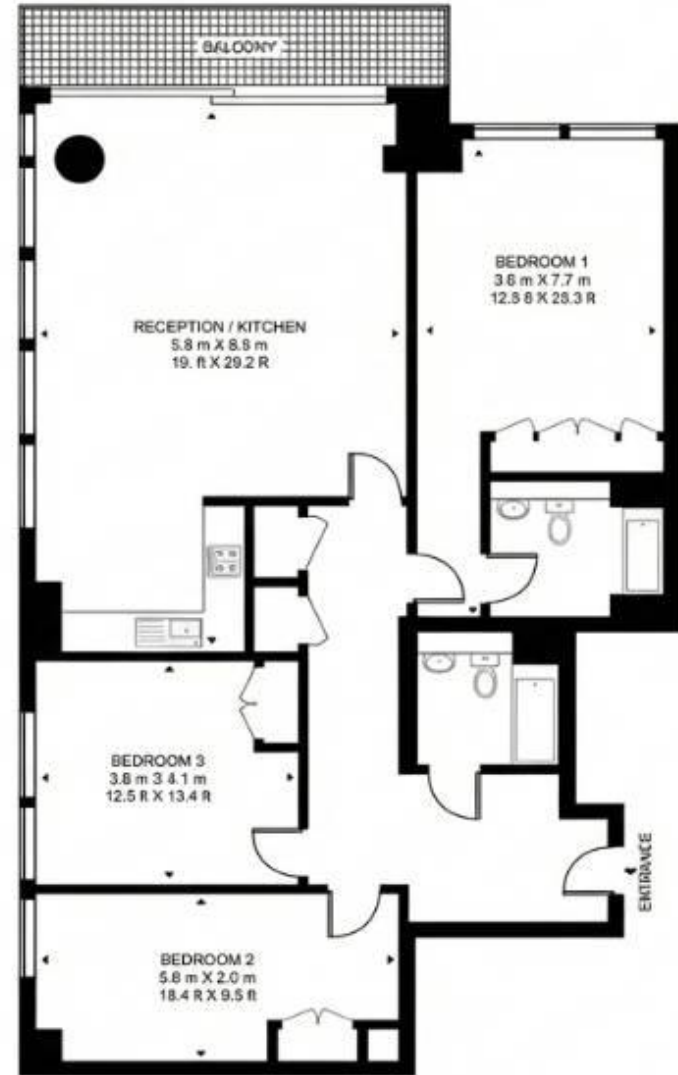
**£4,489** pcm  
£1,036pw

# FLOORPLAN



## LANDMARK EAST

APPROXIMATE GROSS INTERNAL FLOOR AREA 1432 SQ.FT (133.0 SQ. M)







# LIVING ROOM

---

A luxurious, light-filled living room on the 37th floor with panoramic city views. The open-plan space features a generous seating area and a glass dining table on warm timber floors. Blue sofas, contemporary accents and floor-to-ceiling windows create a sophisticated, airy atmosphere. A spacious balcony off the room offers sweeping skyline vistas for entertaining or relaxation.

## SPECIFICATIONS

- 37th floor with dramatic city skyline views.
- Floor-to-ceiling windows flood the room with natural light.
- Plush blue sofas provide comfortable, contemporary seating.
- Timber flooring throughout enhances the warm, modern feel.
- Open-plan layout connects living and dining areas seamlessly.
- Balcony offers outdoor space and impressive urban vistas.



# KITCHEN

---

Set within an open-plan living space, this bright, contemporary cooking area features high-gloss white cabinetry and seamless worktops. Appliances are integrated for a clean, streamlined look, including an oven, hob and microwave. Floor-to-ceiling windows flood the space with natural light and lead to a balcony with city views, ideal for entertaining.

## SPECIFICATIONS

- Open-plan layout blends living, dining, and cooking spaces.
- Gloss white cabinetry creates a bright, modern ambiance.
- Integrated appliances include oven, hob and microwave.
- Sleek, seamless worktops with minimalist handleless doors.
- Floor-to-ceiling windows offer city views.
- Integrated modern kitchen storage





# MASTER BEDROOM

---

Bright and spacious master bedroom featuring a plush, tufted headboard and crisp white decor. Large windows bathe the room in natural light and offer expansive city skyline views. Built-in white wardrobes provide ample storage while keeping the space uncluttered. An en-suite bathroom with modern fittings and a bath/shower adds convenient private facilities.

## SPECIFICATIONS

- Panoramic city skyline views from large windows.
- Luxurious tufted headboard with contemporary styling.
- Built-in white wardrobes provide generous storage.
- En-suite bathroom with shower and modern fittings.
- Neutral palette and soft carpet for a calm ambiance.
- Bright, sunlit room with minimalist, hotel-style design.





# ENSUITE BATHROOM

---

A contemporary ensuite bathroom with a neutral, easy-care palette. A wall-hung rectangular sink with a chrome faucet sits beside a concealed cistern toilet. A spacious shower area is enclosed by clear glass and features dual heads. Beige wall and floor tiles create a light, hygienic and calm atmosphere.

## SPECIFICATIONS

- Wall-hung toilet with concealed cistern for a sleek finish.
- Spacious walk-in shower with glass enclosure and dual heads.
- Wall-mounted rectangular sink with chrome tap and vanity storage.
- Mirrored cabinets provide extra storage above the sink.
- Neutral beige tiling creates a calm, easy-clean bathroom.
- Bright, recessed lighting enhances visibility.



# SECOND BEDROOMS

---

The second bedrooms present a bright, contemporary sanctuary with city views. Comfortable double beds rest against a neutral palette, complemented by crisp white linens. Spacious built-in wardrobes and storage keep the rooms tidy, while dedicated desks provide practical workspaces. Floor-to-ceiling windows flood both second bedrooms with natural light, while neutral decor and thoughtful furnishing create calm, versatile spaces.



## SPECIFICATIONS

- Bright, light-filled rooms with floor-to-ceiling windows.
- Comfortable double beds with fresh white linens.
- Built-in white wardrobes offer ample storage.
- Dedicated desks for study or work.
- Easy access to family bathroom
- Neutral decor enhances relaxation and versatility.



# FAMILY BATHROOM

---

A well equipped family bathroom featuring a full-size bath with a clear glass screen. The shower system includes a rainfall option. A wall-mounted basin and concealed-cistern toilet provide a sleek, space-saving finish. Chrome fittings and neutral tiling create a modern, spa-inspired feel.

## SPECIFICATIONS

- Bath with glass shower screen for versatile use.
- Shower option for convenience.
- Wall-mounted basin and concealed cistern toilet save space.
- Large mirror enhances light and perceived room size.
- Chrome fixtures with neutral tiles create a modern feel.
- Towel radiator adds warmth and practicality.

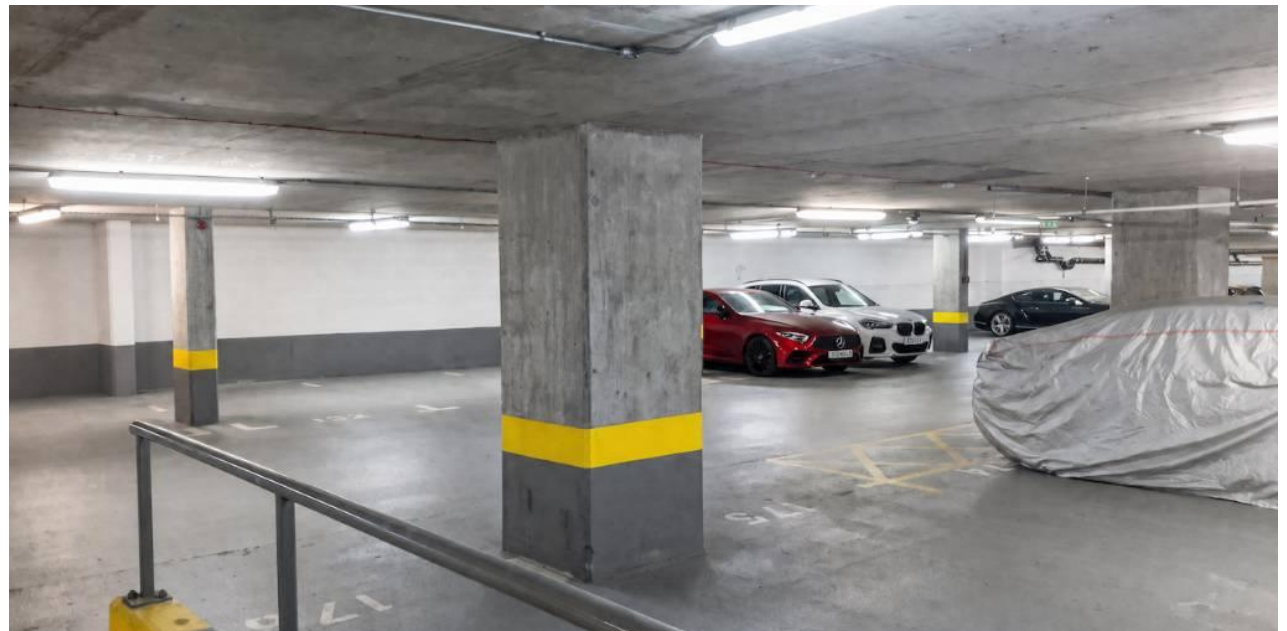


# FACILITIES

State-of-the-art gym facility within the building offers a comprehensive workout space housing a full cardio zone with treadmills, ellipticals, and bikes. A range of free weights, resistance machines, and a functional training area supports varied strength sessions. Large mirrors and wall-mounted TVs create an engaging, motivating environment. The apartment also benefits from an allocated parking space in the private underground car park and access to the bicycle store.

## SPECIFICATIONS

- Extensive cardio suite with treadmills and ellipticals.
- Free weights and resistance machines for strength training.
- Functional training area for versatile workouts.
- Mirrored walls and TVs boost motivation during sessions.
- Allocated parking space in private underground car park.
- Access to private and secure bicycle storage room.



# ABOUT NH PROPERTIES

---

At NH Properties, we understand the importance of finding a home that matches your lifestyle and expectations. With extensive experience in the **North West London** and **Canary Wharf** markets, We specialise in curating exceptional properties for discerning tenants. Our team is dedicated to delivering a seamless, **high-quality experience**, ensuring every detail is managed with care and professionalism. We are committed to excellence and our expertise ensures properties are presented to the highest standard, attracting premium tenants and optimising income for clients.

## NICHOLAS HART

FOUNDER

- 📞 0203 602 2525
- ✉ [info@nh-properties.co.uk](mailto:info@nh-properties.co.uk)
- 🌐 [nh-properties.co.uk](http://nh-properties.co.uk)
- 📍 Hillview House, 1 Hallswelle  
Parade, London NW11 0DL

CALL US TODAY!



PROPERTIES



## NICHOLAS HART

NH PROPERTIES

---

0203 602 2525

[info@nh-properties.co.uk](mailto:info@nh-properties.co.uk)

[nh-properties.co.uk](http://nh-properties.co.uk)

