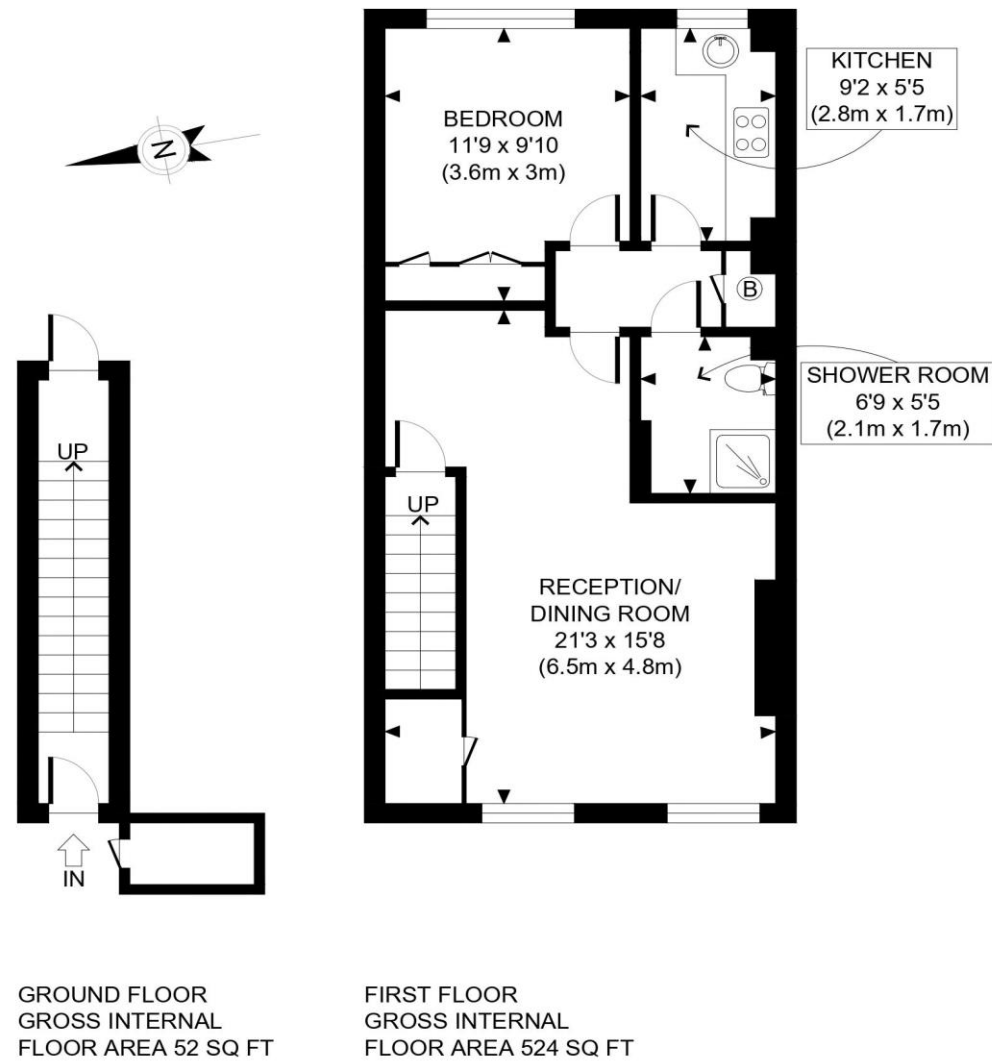


The Floorplan...



APPROX. GROSS INTERNAL FLOOR AREA: 576 SQ FT/ 54 SQM

This plan is for illustrative purposes only and should be used as such by any prospective client. Whilst every attempt has been made to ensure the accuracy of the Floor Plan contained here, measurements of the doors, windows, rooms and any other items are approximate and no responsibility is taken for any errors, omissions, or misstatement. The services, systems and appliances shown have not been tested and no guarantee as to the operability or efficiency can be given.

PROPERTY PHOTO PLANS .CO.UK
ONE STOP SHOP FOR PROPERTY MARKETING

More Details From...

Call: **Brian Cox North Harrow: 020 3866 6640**

Email: nhadmin@brian-cox.co.uk

Web: www.brian-cox.co.uk



0203 866 6640
brian-cox.co.uk



RETIRMENT FLAT OVER 55's ONLY Brian Cox Estate Agents are delighted to offer this one bedroom first floor retirement flat to the market. The very bright and spacious flat is set in a sought after residential area of Harrow. This one bedroom warden assisted flat has a host of accessibility measures throughout the property, and benefits from a spacious lounge/diner, fitted kitchen and bathroom. Bladon Gardens is well located close to West Harrow and North Harrow tube station, and all of the useful local amenities near Harrow town centre.



£124,950
Leasehold

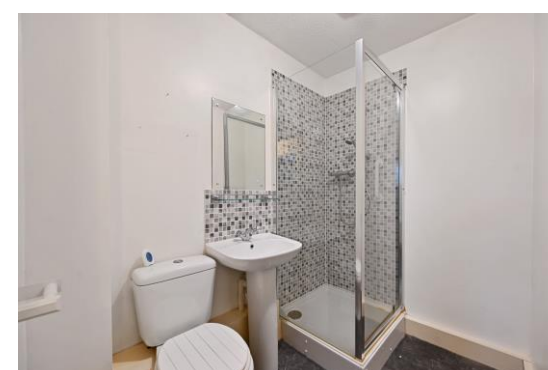
Bladon Gardens, Harrow HA2 7BA

Consumer Protection from Unfair Trading Regulations 2008 We have not tested any apparatus, equipment, fixtures, fittings or services and so cannot verify that they are in working order or fit for purpose. You are advised to obtain verification from your solicitor or surveyor. References to the tenure of a property are based on information supplied by the seller. We have not had sight of the title documents and a buyer is advised to obtain verification from their solicitor. Items shown in photographs are not included unless specifically mentioned within the sales particulars, but may be available by separate negotiation. We advise you to book an appointment to view before embarking on any journey to see a property, and check its availability.



In Brief...

- One Bedroom Retirement Apartment
- First Floor with Stair Lift
- Warden Managed Property
- Well Presented Accommodation
- No Upper Chain & Close Amenities
- Sought After Location & Parking
- Attractive Communal Grounds



The Location...

Nearest Stations ...

West Harrow Station 0.2 miles
North Harrow Station 0.3 miles
Rayners Lane Station 0.8 miles

North Harrow is a suburban area of North West London, situated North-West of Central Harrow within the London Borough of Harrow. North Harrow train station is a London Underground station situated in North Harrow in North West London. The station is on the Metropolitan line between Harrow-on-the-Hill (southbound) and Pinner (northbound). The area is served well by local amenities including a post office, Tesco Express, a selection of restaurants, take-aways & independent specialist shops.