



72 Cambria Road | London | SE5 9AS

Freehold

£950,000

- Three double bedrooms
- Private garden
- Period features
- Separate kitchen and living room
- Plenty of storage
- Local amenities
- Denmark Hill Station
- Loughborough Junction
- Ruskin Park
- Kings College Hospital



End of terrace Victorian house on an attractive road near to Ruskin Park. Original layout with a wider garden this property has been very well looked after by the current owners. it has huge potential to add value by extending the loft and side return. Double reception with period features through out. Kitchen diner to the rear and upstairs are three double bedrooms and family bathroom with separate wc. Fun, sociable and sought-after place to live, with the bars, restaurants and bistros of Camberwell a short walk away and Brixton Village equally close. Herne Hill is also nearby with its renowned Sunday Market, as well as Brockwell Park and Lido. Excellent transport links to King's Cross from Loughborough Junction station, to Victoria and London Bridge from Denmark Hill station, and Victoria line services at

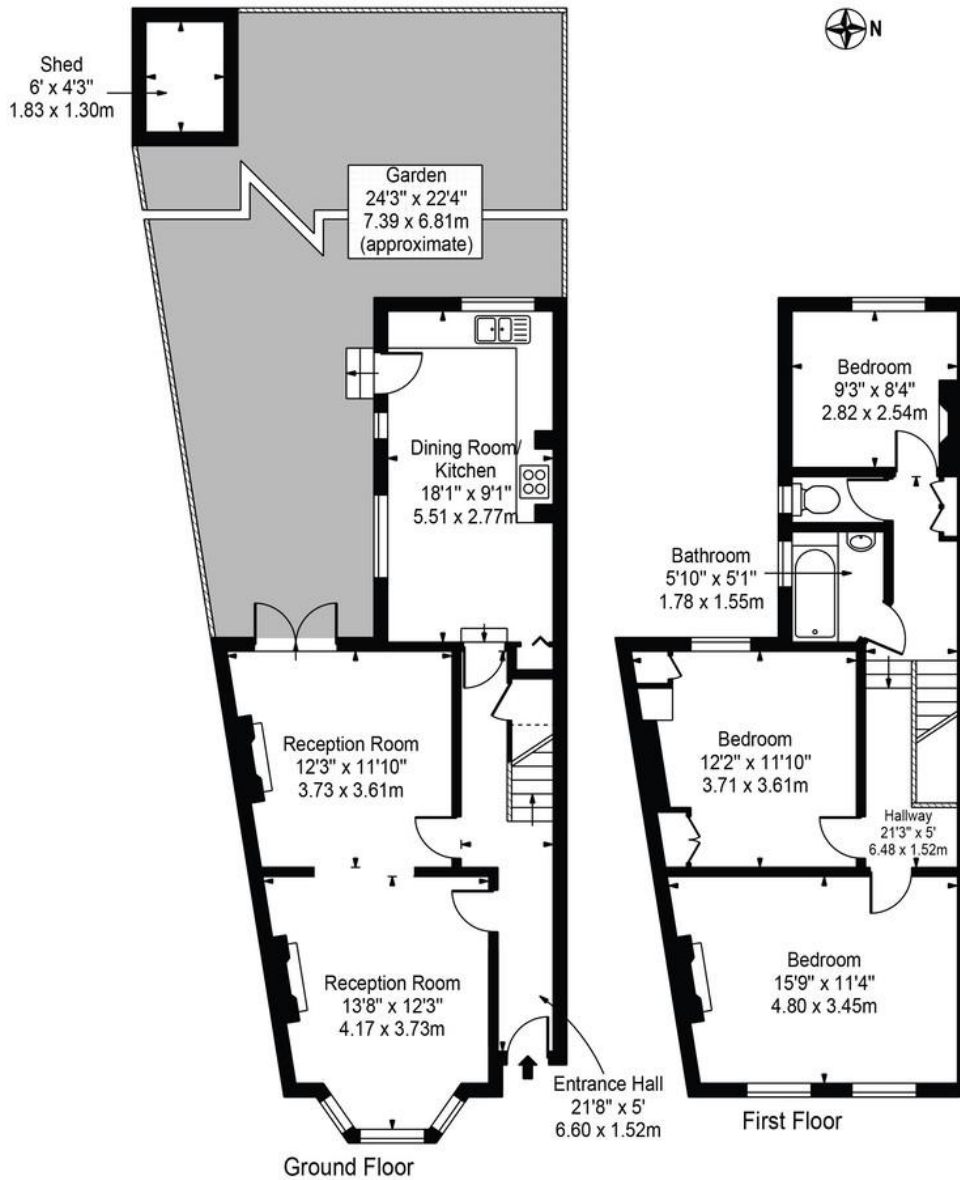


%epcGraph_c_1_300%

Cambria Road, SE5 9AS

Approx. Gross Internal Area 1088 Sq Ft - 101.08 Sq M
(Excluding Shed)

Approx. Gross Internal Area Of Shed 26 Sq Ft - 2.38 Sq M



For Illustration Purposes Only - Not To Scale

This floor plan should be used as a general outline for guidance only and does not constitute in whole or in part an offer or contract. Any intending purchaser or lessee should satisfy themselves by inspection, searches, enquiries and full survey as to the correctness of each statement. Any areas, measurements or distances quoted are approximate and should not be used to value a property or be the basis of any sale or let.

Viewing Arrangements

Strictly by appointment

Contact Details

121 Denmark Hill

London

SE5 8EN

www.urbanvillagehomes.co.uk

sales@urbanvillagehomes.com

020 3519 9121

Agents Note: Whilst every care has been taken to prepare these sales particulars, they are for guidance purposes only. All measurements are approximate and for general guidance purposes only and whilst every care has been taken to ensure their accuracy, they should not be relied upon and potential buyers are advised to recheck the measurements