

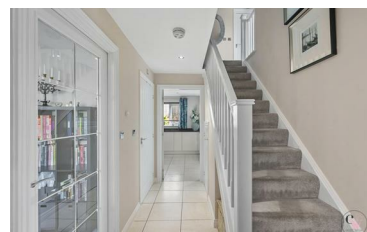


5 James Clarke Road, Winsford CW7 2GT

Asking price £375,000



Hawthorn House, situated on the outskirts of Winsford, was previously the show home on the Spring Croft development by Taylor Wimpey. It is ready for someone to simply walk into and enjoy life. This beautiful, spacious detached home has outstanding upgraded features throughout and has the added advantage of the converted, larger than average double, detached garage. The converted garage offers significantly more space than typically expected and lends itself to a variety of uses, including studio, office, gym, games room, etc. A well-maintained exterior reflects a sense of pride in ownership. The high quality exterior is matched by the interior décor and spacious layout, providing ample space for relaxation and entertaining. The living areas are filled with natural light, creating a warm and inviting atmosphere. The wide entrance hall gives access to all downstairs accommodation which includes a well-proportioned lounge and a further reception room as home office or playroom. There is a downstairs cloakroom, a truly fabulous kitchen/diner/family room with high quality AEG appliances, ample space for a large dining table and for family to relax on the sofa. The well equipped kitchen with granite worktops is



- Larger than normal sized double detached garage that has been fully converted. Currently used as a games room, with massive storage space, complete with power, heating, downlighters, skylight windows, flooring, telephone points and burglar alarm
- Four very spacious double bedrooms, all with fitted wardrobes
- Enclosed landscaped rear garden with greenhouse
- No onward chain
- The home was previously the prime show home meaning it has exclusive upgrades throughout
- Ensuite to Bedroom One
- Tucked away from the main James Clarke Road, with complete privacy at the front and no passing foot-fall