



Silvercliffe Gardens

New Barnet, EN4 9QT

Offers in excess of £700,000



Welcome to Silvercliffe Gardens

New Barnet, EN4 9QT

Nestled in the tranquil Silvercliffe Gardens of Barnet, this charming detached bungalow offers a delightful blend of comfort and convenience. Spanning approximately 850 square feet, the property features two well proportioned bedrooms, making it an ideal home for families or those seeking a peaceful retreat.

Upon entering, you are welcomed by a spacious entrance hall, complete with a double-glazed window that fills the space with natural light. The hall provides access to a convenient WC and a loft, as well as a cupboard with a hanging rail for your storage needs. The reception room is a highlight of the home, boasting a large double-glazed window that overlooks the front garden, complemented by a gas coal effect fire, perfect for cosy evenings and also benefiting from a double garage.

The fitted kitchen is both functional and stylish, featuring a range of base and eye-level units, a breakfast bar, and modern appliances including a gas hob, double oven, integrated fridge freezer, dishwasher, and washing machine. A double-glazed window offers a pleasant view of the front, ensuring the space remains bright and inviting.

The bedrooms are thoughtfully designed, with one offering double-glazed doors that open directly onto the rear garden, creating a seamless connection between indoor and outdoor living. One bedroom is equipped with built-in wardrobes and ample power points, catering to all your storage and electrical needs.

The bathroom is well-appointed, featuring a concealed flush WC, a vanity unit with a wash hand basin, and a panelled bath, providing a serene space for relaxation.

Outside, the rear garden is a private oasis, perfect for enjoying sunny days or hosting gatherings. This bungalow not only offers a comfortable living space but also the potential for a lovely garden retreat. With its prime location and thoughtful layout, this property is a must-see for anyone looking to settle in Barnet.









PHILLIES
BOULEVARD OF BROKEN DREAMS
PAINTED BY HELMUT

THE BEATLES

Small framed pictures on a shelf

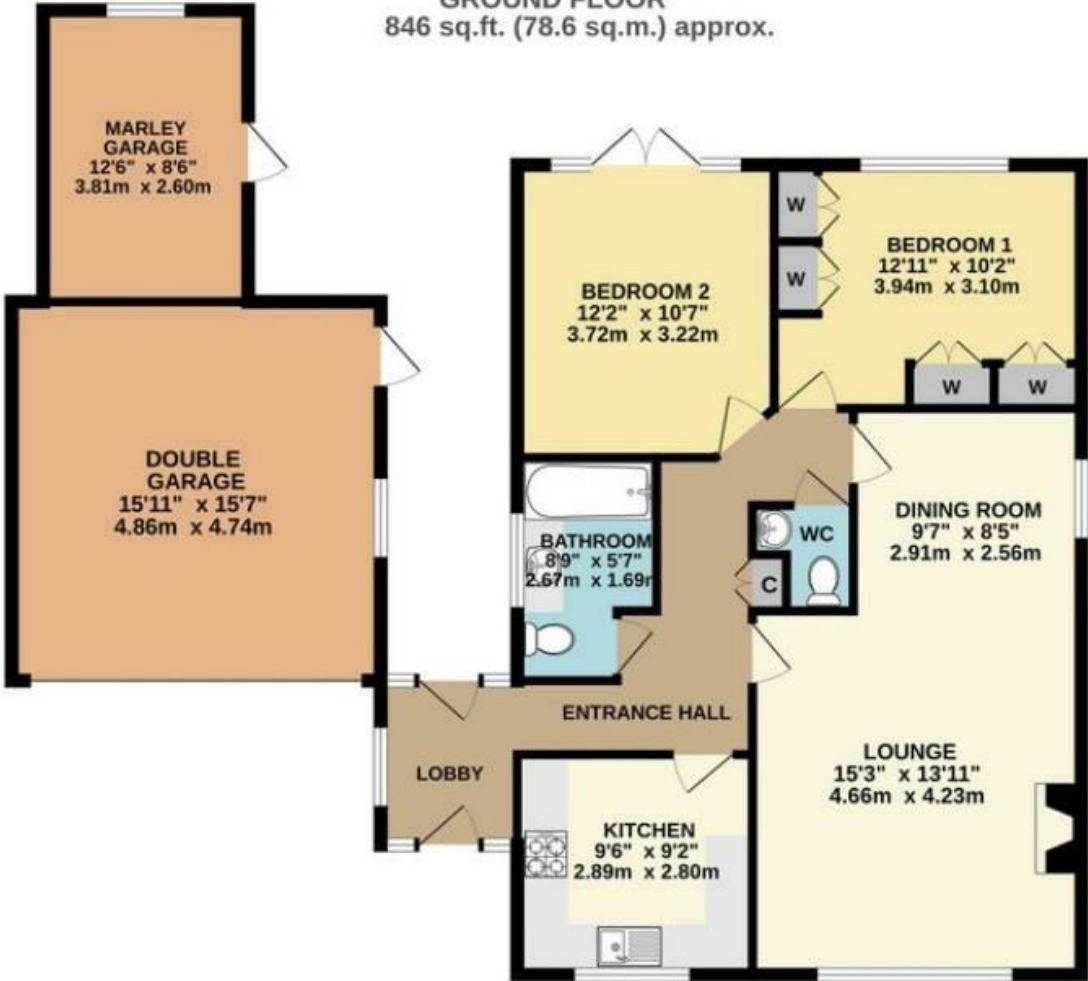
UNION JACK CUSHION







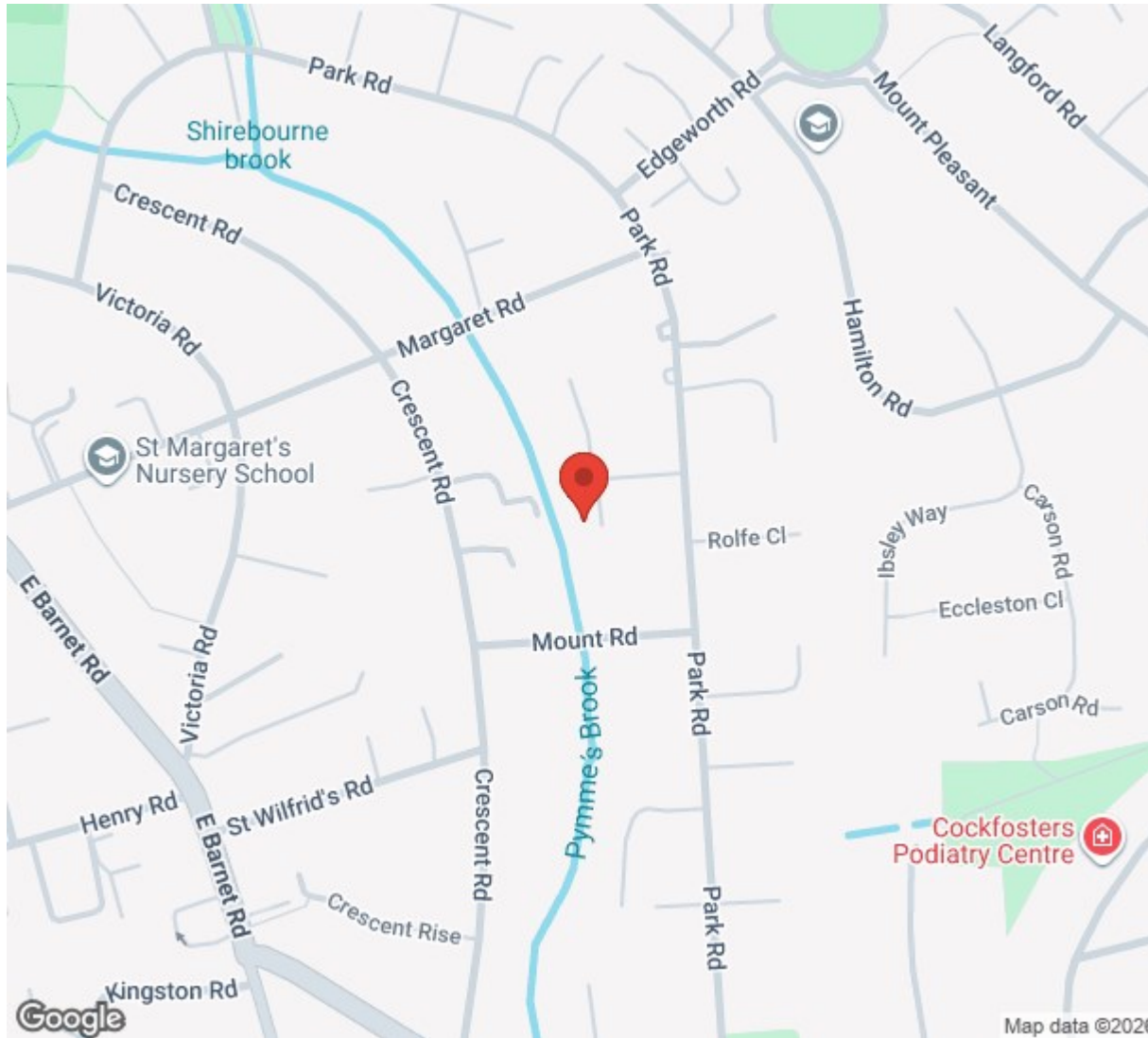
Floor Plan



GROUND FLOOR
846 sq.ft. (78.6 sq.m.) approx.

(MEASUREMENTS EXCLUDE THE GARAGES)
TOTAL FLOOR AREA : 846 sq.ft. (78.6 sq.m.) approx.

Area Map



Viewing

Please contact our Aleco Estate Agents Office on **02084498808** if you wish to arrange a viewing appointment for this property or require further information.

These particulars, whilst believed to be accurate are set out as a general outline only for guidance and do not constitute any part of an offer or contract. Intending purchasers should not rely on them as statements of representation of fact, but must satisfy themselves by inspection or otherwise as to their accuracy. No person in this firm's employment has the authority to make or give any representation or warranty in respect of the property.

Aleco Estate Agents

256 East Barnet Road, East Barnet, Hertfordshire, EN48TD

Tel: 02084498808 Email: info@alecoestates.com Website: www.alecoestates.com

Experienced,
Proactive &
Award Winning Agency.



Residential Sales & Lettings
Property Management

Guaranteed Rent Scheme*

*(0% commission)

Contact us today for your **free valuation**

0208 449 8808

Energy Efficiency Graph

