



## KHAMA ROAD, SW17

£1,000,000

Four Bedrooms  
Three Bathrooms  
In excess of 1600 SQFT  
Four Stories  
Well Presented Throughout  
Chain Free

# ABOUT THE PROPERTY

A well-presented, four-story family home situated a short walk from Tooting Broadway Tube station. extending to over 1,600 sq ft with four bedrooms, a large kitchen/diner, a spacious reception room, three bathrooms and a landscaped private garden.

Khama Road is a quiet residential street well located for the amenities of Tooting, well regarded local schools and excellent transport links.

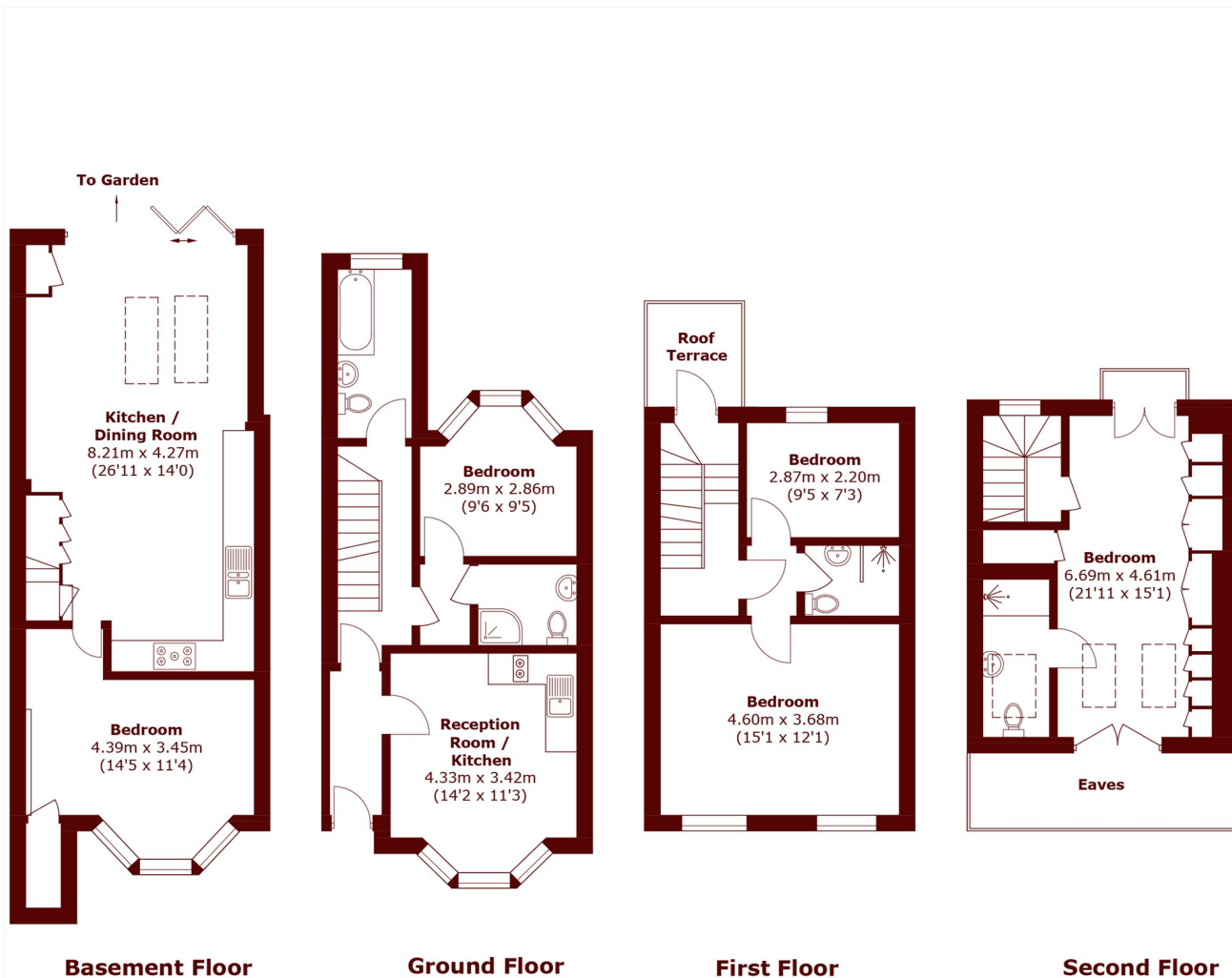








# STEP INSIDE KHAMA ROAD



Total area (approx.): 156.6 sq. m (1,685.4 sq. ft)  
(Including Basement / Excluding Eaves)

Tooting  
020 8767 3655

Energy Rating: We aim to make our particulars both accurate and reliable. However, they are not guaranteed; nor do they form part of an offer or contract. If you require clarification on any points then please contact us, especially if you're traveling some distance to view. Please note that appliances and heating systems have not been tested and therefore no warranties can be given as to their good working order

MARSH &  
PARSONS