



£220,000

*At a glance...*



2



1



1

EPC

C

COUNCIL  
TAX

B

**holland  
& odam**

6 Gould Close  
Street  
Somerset  
BA16 0AZ

**TO VIEW**

3 Farm Road, Street,  
Somerset BA16 0BJ

**01458 841411**

[street@hollandandodam.co.uk](mailto:street@hollandandodam.co.uk)



## Directions

From the High Street proceed in an easterly direction until reaching the Wessex Hotel on the right. Proceed straight across the mini roundabout into Church Road and take the first right hand turning into Strode Road passing the indoor swimming pool. Continue, crossing the junction at the bottom of Bove Moor Road into the development where the turning to Gould Close is the second on your left. 6 Gould Close will be found on the right hand side and identified by our for sale board.

## Services

Mains electricity, gas, water and drainage are connected. Gas central heating system.

## Local Authority

Somerset Council  
0300 1232224  
[somerset.gov.uk](http://somerset.gov.uk)

## Tenure

Freehold



## Location

The property is situated within an established area of the town which offers a good range of shopping facilities including Clarks Village complex of factory shopping outlets. Street also offers recreational facilities including theatre, tennis, bowls, and both indoor and outdoor swimming pools. The historic town of Glastonbury is within 3 miles, the Cathedral City of Wells 9 miles and the nearest M5 motorway interchange at Dunball, Bridgwater is within 14 miles. Bristol, Bath, Taunton and Exeter are each within an hours drive.

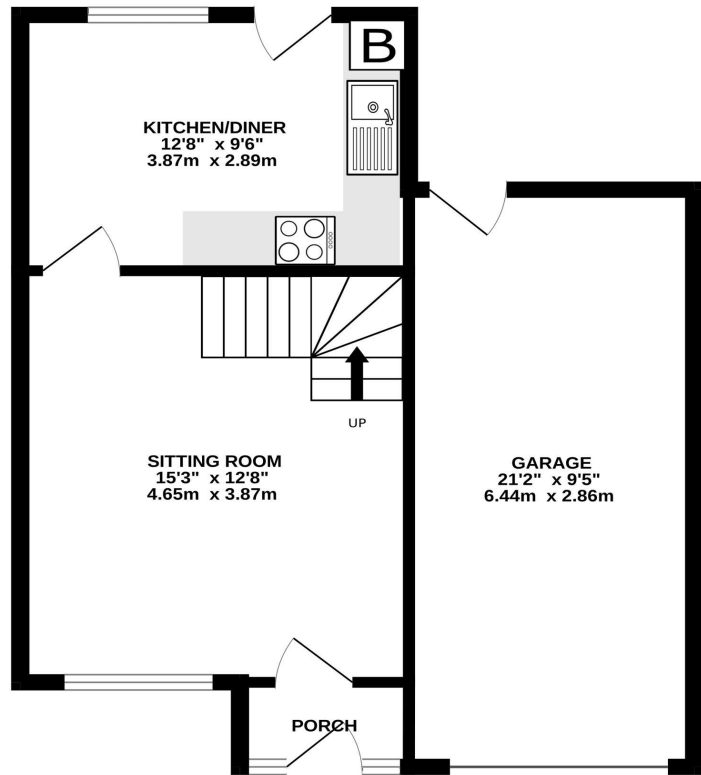
## Insight

A well-presented two-bedroom semi-detached home offering bright and comfortable accommodation in a popular residential area. Ideally located for access to local amenities, schools and transport links. This property presents an excellent opportunity for first-time buyers or investors, with the added benefit of driveway parking, garage and desirable south facing rear garden.

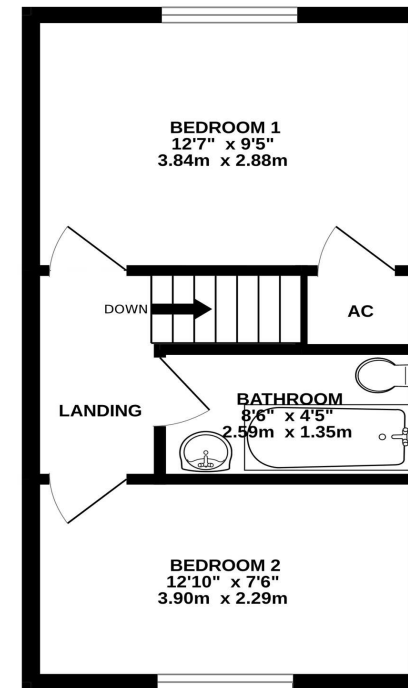
- An ideal opportunity for first time buyers, investors and professionals alike looking to put their own mark on a property.
- Enjoying a good size sitting room that is light and bright with ample room for furniture.
- Well appointed, generous sized kitchen/diner fitted with wall, base and drawer units and space for under counter and free standing appliances.
- Two well proportioned double bedrooms with more than enough space for free standing furniture and one with built in cupboard space.
- The property is serviced by the family bathroom comprising bath with shower over, wash basin and WC.
- A fully enclosed, desirable south facing rear garden with a spacious patio area and steps leading up to a raised lawn bordered by mature planting.
- The front is laid to lawn with driveway parking leading to the garage, which features an up-and-over door, power and lighting, and a rear pedestrian door providing access to the garden.



GROUND FLOOR  
516 sq.ft. (47.9 sq.m.) approx.



1ST FLOOR  
305 sq.ft. (28.3 sq.m.) approx.



TOTAL FLOOR AREA : 821 sq.ft. (76.2 sq.m.) approx.

Whilst every attempt has been made to ensure the accuracy of the floorplan contained here, measurements of doors, windows, rooms and any other items are approximate and no responsibility is taken for any error, omission or mis-statement. This plan is for illustrative purposes only and should be used as such by any prospective purchaser. The services, systems and appliances shown have not been tested and no guarantee as to their operability or efficiency can be given.  
Made with Metropix ©2025

**DISCLAIMER**

CONSUMER PROTECTION FROM UNFAIR TRADING REGULATIONS 2008. The Agent has not tested any apparatus, equipment, fixtures and fittings or services and so cannot verify that they are in working order or fit for the purpose. A Buyer is advised to obtain verification from their Solicitor or Surveyor. References to the Tenure of a Property are based on information supplied by the Seller. The Agent has not had sight of the

title documents. A Buyer is advised to obtain verification from their Solicitor. Items shown in photographs are not included unless specifically mentioned within the sales particulars. They may however be available by separate negotiation. Buyers must check the availability of any property and make an appointment to view before embarking on any journey to see a property.

DATA PROTECTION. Personal information provided by customers wishing to receive information and/or services from the estate agent and the Property Sharing Experts (of which it is a member) for the purpose of providing services associated with the business of an estate agent but specifically excluding mailing or promotions by a third party. If you do not wish your personal information to be used for any of these purposes, please notify us.