



Salisburys

2 Rock Park, Tavistock, PL19

Offers In Region Of £485,000

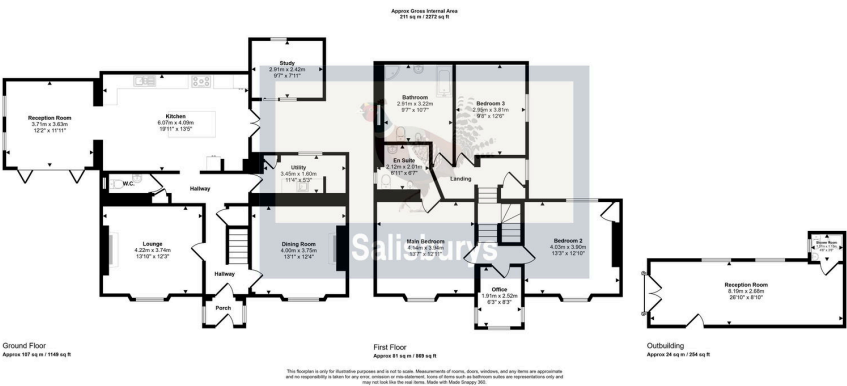
🛏 4 🚿 2 🛋 3



- Impressive family home
- Beautifully presented interior
- Three Reception Rooms
- Fully fitted kitchen with Garden Room for entertaining
- Separate Utility Room and Courtyard Studio/Office
- Three Double Bedrooms (Master En-suite)
- Bedroom 4/Office
- Separate multi-purpose Garden Studio
- Decked Sun Terraces and lawned gardens
- Imposing position overlooking Tavistock and surrounding countryside



IMMACULATELY PRESENTED, VICTORIAN PROPERTY set in a commanding, elevated position within a short walk to the centre of Tavistock. Two Rock Park is presented to a very high specification throughout with the added benefit of TWO STUDIOS, a stunning open plan 'Hacker' Kitchen and Entertaining Room with bi-fold doors to the Sun Terrace, two further reception rooms, separate Utility Room, downstairs w.c, and Courtyard Studio/Office to the ground floor. Upstairs, the property boasts 4 bedrooms (Master En-suite) and a Family Bathroom. Externally, the house offers large gardens with two decked Sun Terraces and a Garden Studio/Office/Gym which all have the benefit of far reaching views across the edge of Tavistock. The property offers many original features throughout including stripped pine doors and original flagstone flooring to the Kitchen and Hallway. A superbly presented home that offers space and style both inside and outside the property.



Score	Energy rating	Current	Potential
92+	A		
81-91	B		
69-80	C		79 C
55-68	D	56 D	
39-54	E		
21-38	F		
1-20	G		

