



## Crocombe

Timsbury, BA2 0JS

£588,000

Located in a desirable location within the ever popular village of Timsbury, this executive style property is looking for its next owner to love and make a home again.

- No onward sales chain!
- Desirable location
- Rural views to front
- In need of modernisation
- Four double bedrooms
- Close to Bath

### Viewing

Please contact our Bath Stone Property (MSN) Office on 01761 360144

if you wish to arrange a viewing appointment for this property or require further information.



4



2

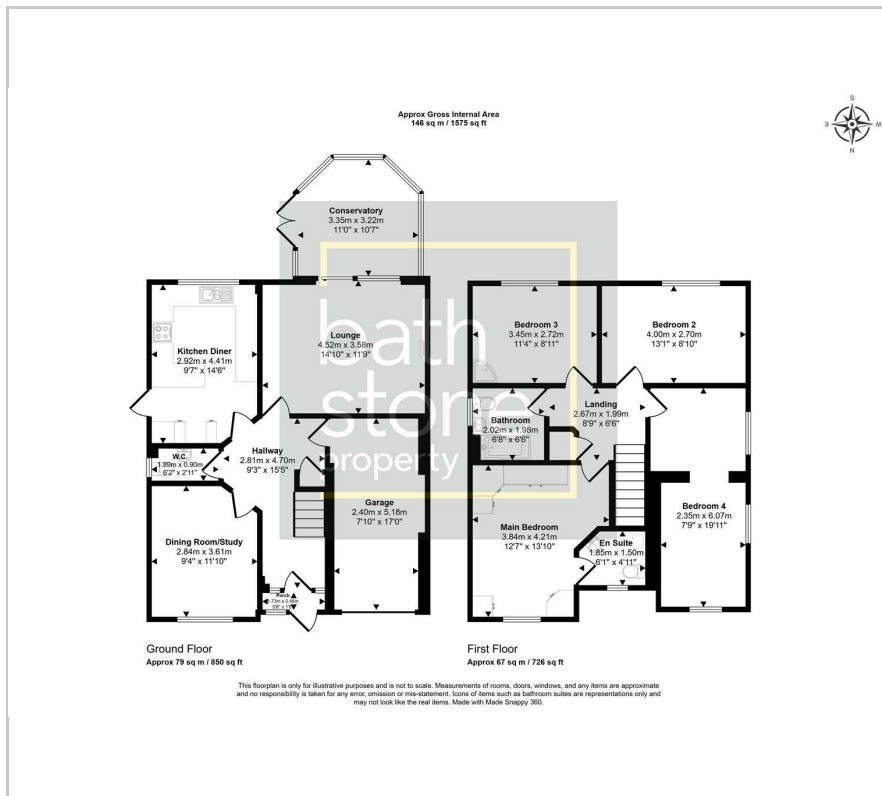


4



E

# Floor Plan



# Energy Efficiency Graph

Energy Efficiency Rating		Current	Potential
Very energy efficient - lower running costs			
(92 plus) <b>A</b>			<b>97</b>
(81-91) <b>B</b>			
(69-80) <b>C</b>			
(55-68) <b>D</b>			
(39-54) <b>E</b>		<b>51</b>	
(21-38) <b>F</b>			
(1-20) <b>G</b>			
Not energy efficient - higher running costs			
<b>England &amp; Wales</b>		EU Directive 2002/91/EC	

Please give us Feedback



These particulars, whilst believed to be accurate are set out as a general outline only for guidance and do not constitute any part of an offer or contract. Intending purchasers should not rely on them as statements of representation of fact, but must satisfy themselves by inspection or otherwise as to their accuracy. No person in this firm's employment has the authority to make or give any representation or warranty in respect of the property.