



TK International
020 7794 8700
www.t-k.co.uk

Residential Sales
Residential Lettings
Property Management

Sales Office:
9 Heath Street
Hampstead
London NW3 6TP
E: sales@t-k.co.uk

Lettings Office:
16-18 Heath Street
Hampstead
London NW3 6TE
E: lettings@t-k.co.uk

tk.international
TK International
TK International

Est.
1998



Englands Lane London NW3

Entered on the first floor and set across the second and third floors, this impressive two bedroom apartment offers a wonderful sense of space and light in the highly sought-after enclave of Belsize Park.

Recently redecorated throughout, and thoughtfully arranged, the property features two well-proportioned double bedrooms, a stylish family bathroom, a separate fully fitted kitchen diner and an inviting reception room ideal for both relaxing and entertaining. A standout feature is the private roof terrace, providing a peaceful outdoor retreat.

The apartment benefits from excellent natural light throughout, complemented by comfortable carpeting and a well-balanced layout.

Perfectly positioned just moments from the vibrant cafés, boutiques, and restaurants of England's Lane, the property also enjoys convenient access to nearby transport links, including Belsize Park (Northern Line) and Swiss Cottage (Jubilee Line), ensuring swift connections into Central London.

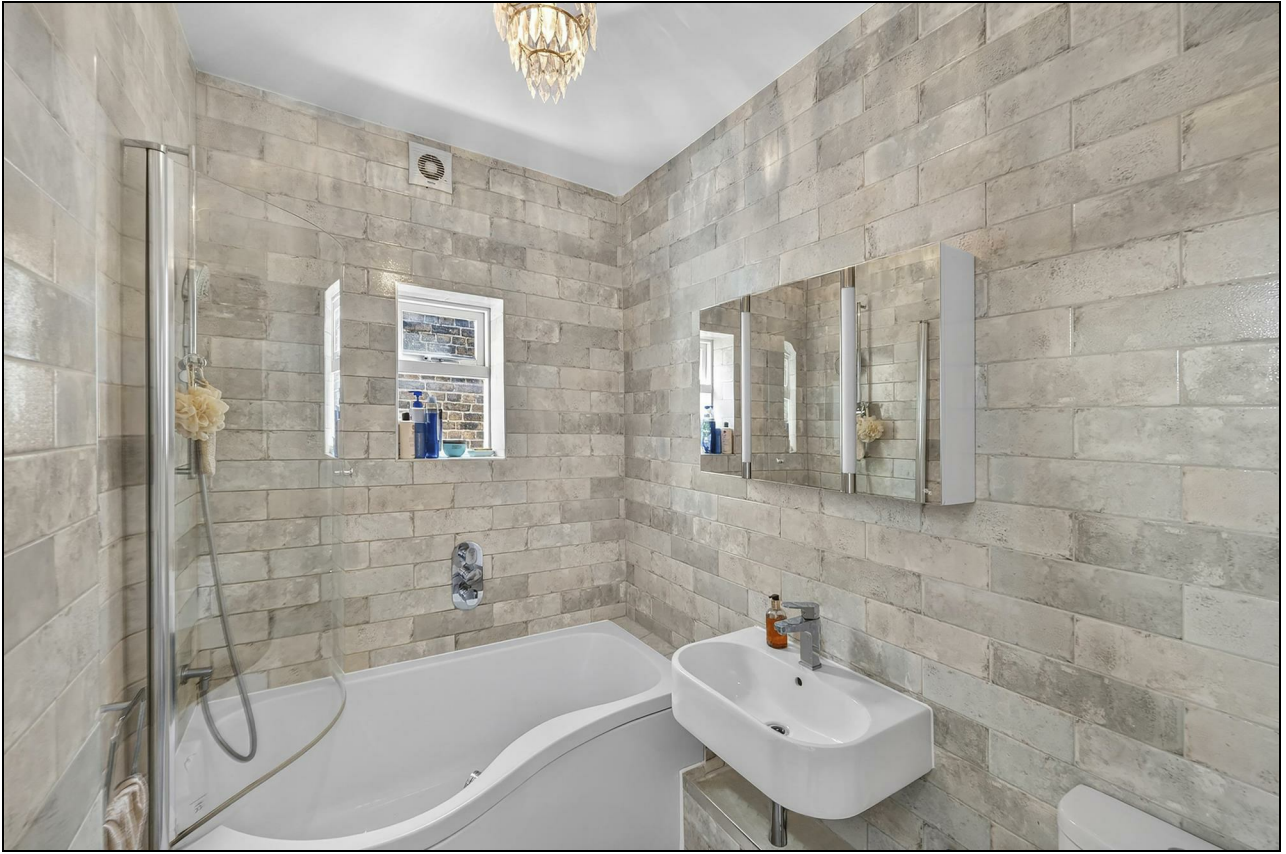
£980,000

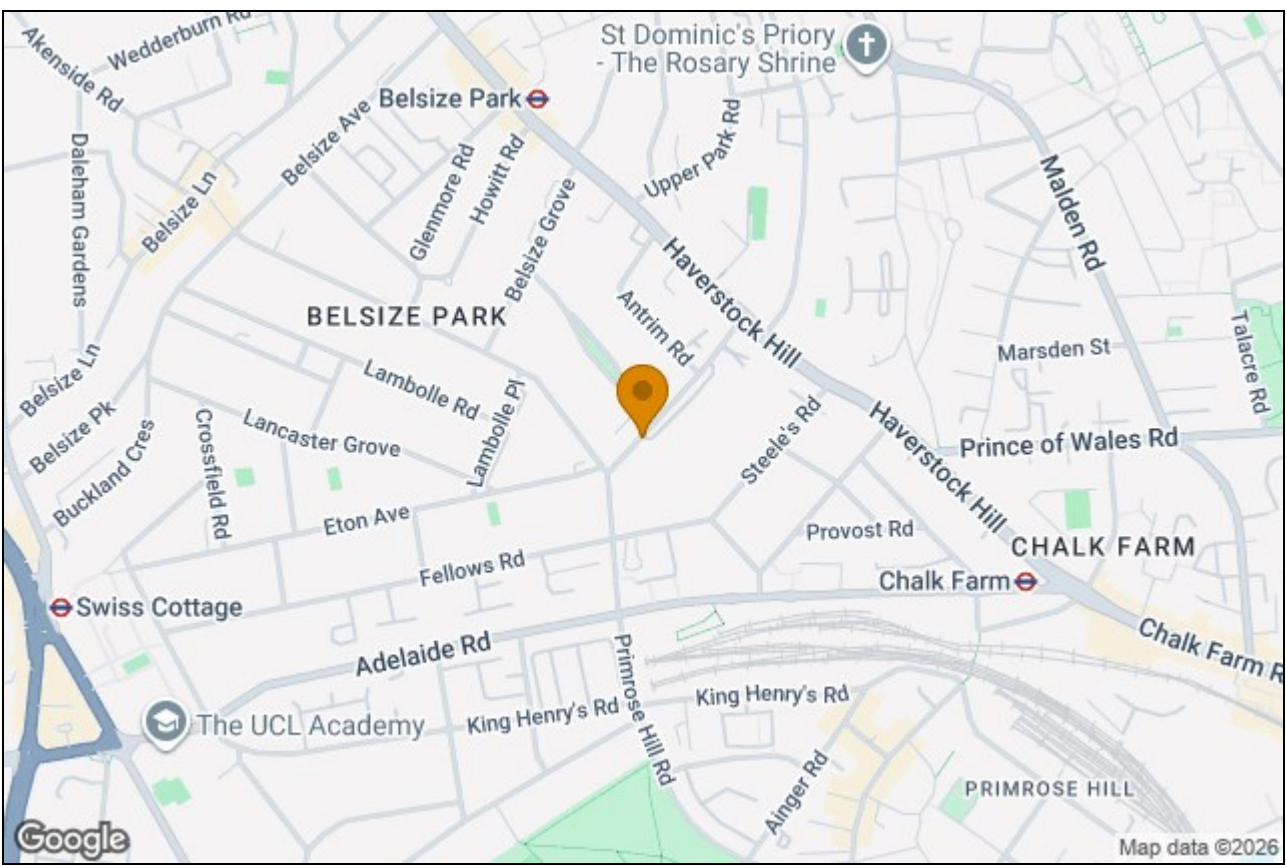
SOLE AGENT

Share of Freehold







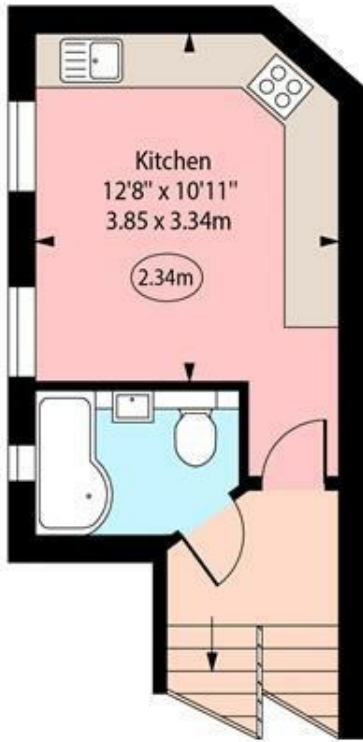


Englands Lane, NW3

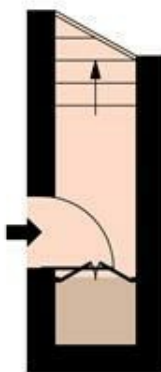


○ - Ceiling Height

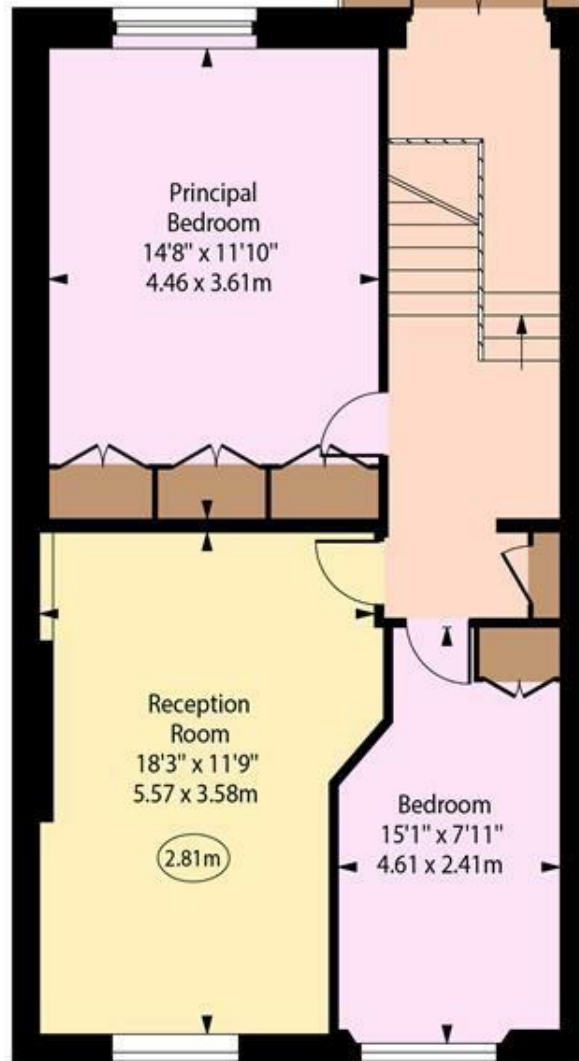
Terrace
18'5" x 12'
5.62 x 3.66m
(approximate)



Second Floor



First Floor
Entrance



Third Floor

Approx Gross Internal Area 947 Sq Ft - 87.98 Sq M

Every attempt has been made to ensure the accuracy of the floor plan shown. However, all measurements, fixtures, fittings, and data shown are approximate interpretations and for illustrative purposes only. Measured according to the RICS. Not To Scale.

www.goldlens.co.uk

Prepared for TK International

Ref. No. 031582D