



Randolph Avenue

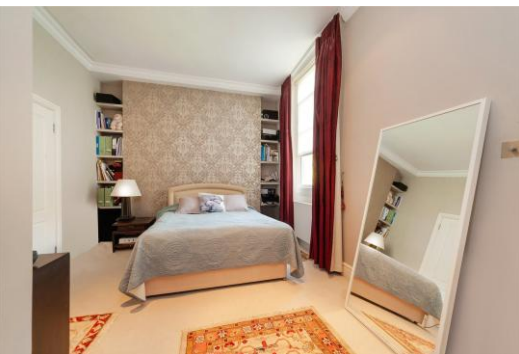
Maida Vale, W9

Asking Price £1,950,000

A sizeable three-bedroom period apartment that has undergone extensive refurbishment throughout, to offer contemporary stylish accommodation.

Situated on the second floor and comprising of a bright elegant reception room with wooden floors and high ceilings, stylish separate integrated kitchen, master bedroom with modern en-suite and built in wardrobes, two further double bedrooms and an additional modern family bathroom. Hardwood floors throughout and further benefitting from a lift. Located moments from Warwick Avenue Underground Station, The Canal & the many cafes of Clifton Road.

CHESTERTONS



Randolph Avenue

Maida Vale, W9

- Handsome Period Upper Floor Conversion
- Three Double Bedrooms & Two Stylish Bathrooms
- Sizeable Reception Room With Hardwood Floors & Lift
- Sought After Little Venice Tree Line Avenue
- EPC Rating C



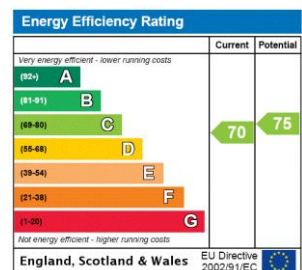
Tenure: Share of Freehold 994 years 6 months

Service Charge: £5,008 pa

Ground Rent: £0

Local Authority: City Of Westminster

Council Tax Band: G



Chestertons Little Venice Sales

26 Clifton Road

Maida Vale

London

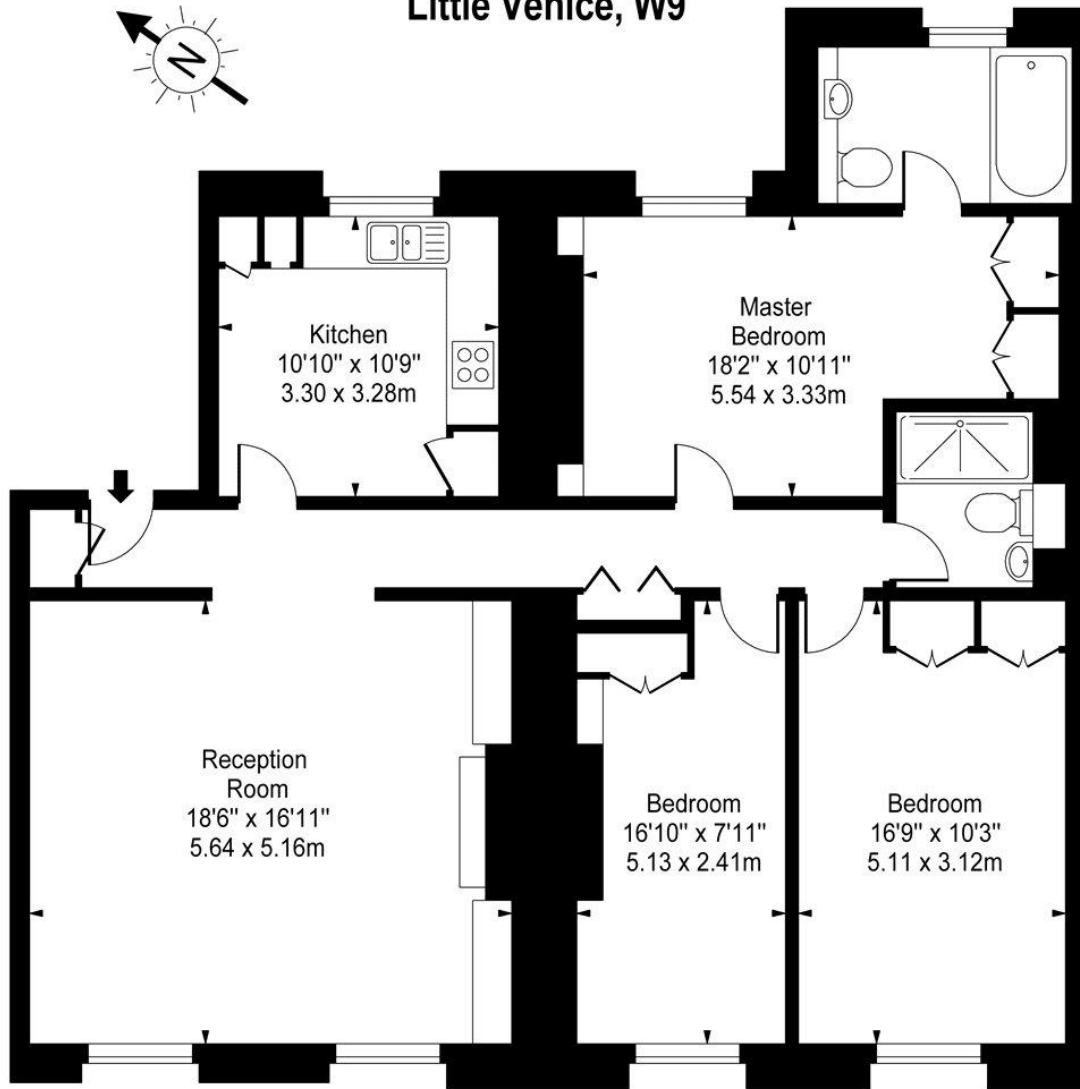
W9 1SX

littlevenice@chestertons.co.uk

020 7286 4632

chestertons.co.uk

**Randolph Avenue,
Little Venice, W9**



Second Floor

Approx Gross Internal Area **1240 Sq Ft - 115.20 Sq M**

For Illustration Purposes Only - Not To Scale

www.goldlens.co.uk

Ref. No. 00893

