



34 Pembridge Square | Notting Hill | London | W2 4DT

£ 2,100 PCM

 **cityrelay**

34 Pembridge Square | Notting Hill
 London | W2 4DT
 £ 2,100 PCM

Set within an elegant period building in the heart of Bayswater (W2), this beautifully bright studio apartment offers a charming blend of classic architecture and comfortable modern living.

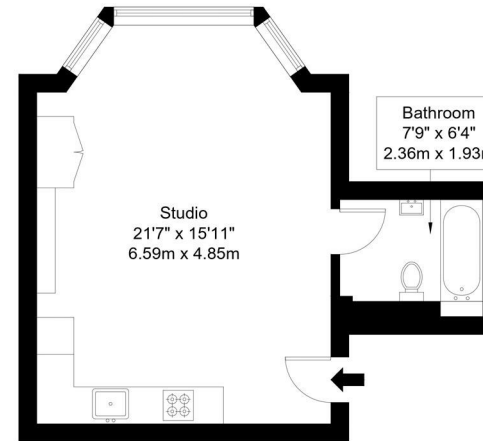


Pembridge Square, W2 4DT

Approx Gross Internal Area = 34.9 sq m / 376 sq ft



- Bright and spacious studio apartment
- High ceilings and attractive period features
- Moments from Notting Hill Gate, Bayswater and Queensway station
- Elegant bay windows overlooking a garden square
- Modern fitted kitchen
- Close to Hyde Park, Westbourne Grove and Portobello Road



First Floor

Energy Efficiency Rating		Current	Potential
<i>Very energy efficient - lower running costs</i>			
(92 plus) A			
(81-91) B			
(69-80) C			
(55-68) D		67	74
(39-54) E			
(21-38) F			
(1-20) G			
<i>Not energy efficient - higher running costs</i>			
England & Wales		EU Directive 2002/91/EC	

Council Tax Band A
 EPC Rating D

10 Cromwell Place
 London
 SW7 2JN
 02038 650611
 lettings@cityrelay.com

Ref :

Copyright **BLEU PLAN**

The Floor plan is not to scale and measurements and areas shown are approximate and therefore should be used for illustrative purposes only. The plan has been prepared in accordance with the RICS code of Measuring Practice and whilst we have confidence in the information produced it must not be relied on. Maximum lengths and widths are represented on the floor plan. If there is any aspect of particular importance, you should carry out or commission your own inspection of the property.
 Copyright © BleuPlan