



ROSS MARGETTS
POWERED BY
exp UK

Woodlands Lane, Storrington, RH20 3HG

Guide Price **£750,000**

Perfectly positioned at the quiet end of an exclusive cul-de-sac, this remarkable single-storey home offers a blend of luxury, privacy, and seamless indoor-outdoor living. Extensively remodelled just three years ago, the home presents a flawless, high-specification finish throughout and is available with no onward chain.

Inside – Light, Space & Modern Design

Step inside and you're greeted by a thoughtfully designed layout, where every detail has been finished to a high contemporary standard. The heart of the home is the stunning sitting room, featuring a vaulted ceiling and triple-aspect bi-folding doors that seamlessly connect the indoors with the landscaped gardens. This uplifting, versatile space is perfect for relaxed living or entertaining, with an abundance of natural light and calming views of mature greenery.

The kitchen is a statement in modern design, with sleek matt cabinetry, granite worktops, and a suite of integrated appliances. Large windows frame leafy outlooks, while the open-plan flow to the living and dining areas makes it ideal for both family life and social occasions.

The principal bedroom suite offers a peaceful retreat, generously proportioned with plush carpeting and neutral décor. A dedicated dressing area provides ample storage, and glazed doors open directly to the outside. The en-suite bathroom is finished to a luxurious standard with a freestanding bath, underfloor heating, twin countertop basins, matt black fittings, and a walk-in rainfall shower—creating a spa-like experience every day. Two further bedrooms provide flexibility for family, guests, or a home office, all finished to the same high standard. The family bathroom continues the theme of contemporary elegance, with minimalist styling and quality fixtures.





Outside – Privacy, Space & Tranquillity

The gardens are a standout feature, wrapping around the property and bordered by mature trees and evergreens for year-round privacy. Expansive resin patios surround the home, offering multiple spaces for outdoor dining, entertaining, or quiet reflection. A pergola-covered deck is the perfect spot for morning coffee or evening gatherings, while the generous lawn provides plenty of space for family activities or simply enjoying the peaceful setting.

To the front, a granite-chipped driveway provides ample parking and leads to both an open car port and an attached garage with remote-controlled entry—ensuring convenience as well as kerb appeal.

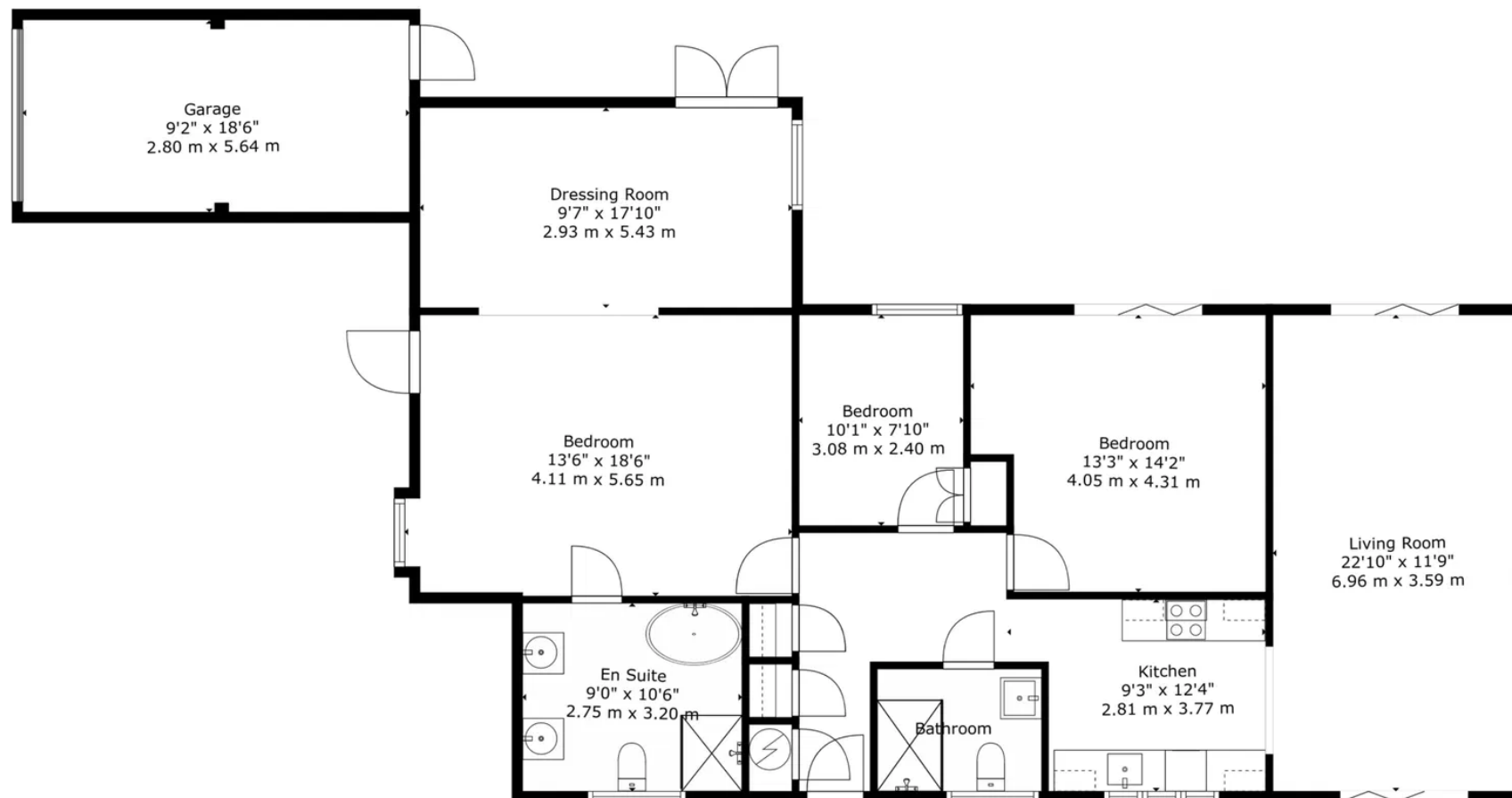
At a Glance

Quiet cul-de-sac location on the edge of Storrington
 Extensively remodelled contemporary home
 Vaulted, triple-aspect living space with bi-fold doors
 Designer kitchen with integrated appliances
 Principal suite with dressing area and luxury en-suite
 Two further bedrooms and stylish family bathroom
 Landscaped wrap-around gardens, patio, and pergola
 Ample parking, car port, and garage
 No onward chain



This is a home that blends style, comfort, and privacy—offering a sophisticated lifestyle in one of Storrington's most desirable settings. Viewings are highly recommended to appreciate the quality and unique appeal of this exceptional property.





TOTAL: 1334 sq. ft, 124 m2
 FLOOR 1: 1334 sq. ft, 124 m2
 EXCLUDED AREAS: GARAGE: 171 sq. ft, 16 m2
 WALLS: 112 sq. ft, 10 m2



Floor Plan Created By Cubicasa App. Measurements Deemed Highly Reliable But Not Guaranteed.