



The Josselyns | Trimley St. Mary | Felixstowe | IP11 0XW

Guide Price £294,000

NICHOLAS
ESTATES

Key features

- Detached Family House
- Three Bedrooms
- Conservatory
- Fully Enclosed Rear Garden
- Off Road Parking & Garage

Description

A well presented, three bedroom detached family house with a fully enclosed garden, set in a cul-de-sac location, situated within the popular village of Trimley St. Mary.

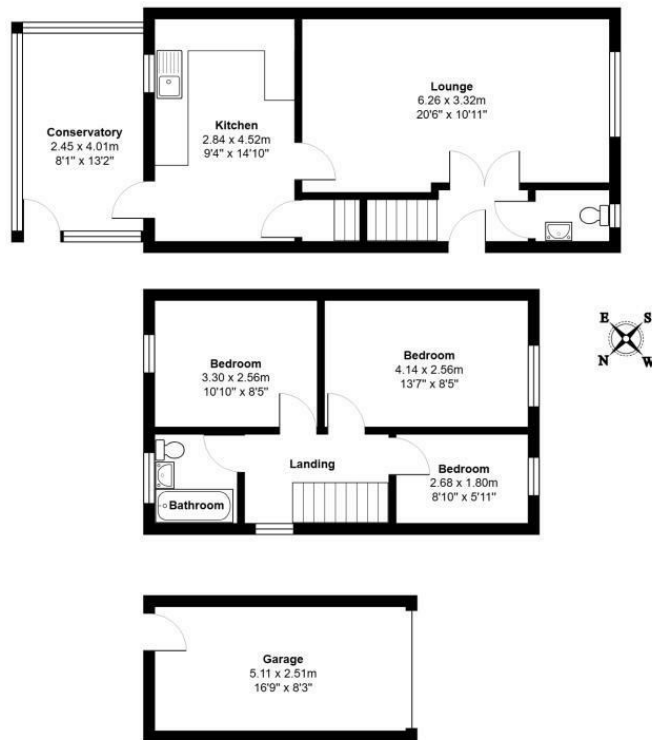


Directions





Floor plans



Total Area: 99.8 m² ... 1075 ft²

Energy Efficiency Rating		
	Current	Potential
<i>Very energy efficient - lower running costs</i>		
(92 plus) A		
(81-91) B		87
(69-80) C	74	
(55-68) D		
(39-54) E		
(21-38) F		
(1-20) G		
<i>Not energy efficient - higher running costs</i>		
England & Wales	EU Directive 2002/91/EC	

Council Tax Band C EPC Rating C

NICHOLAS

ESTATES

173 Hamilton Road
Felixstowe
Suffolk
IP11 7DR

01394 282828

felixstowe@yourhome.co.uk
yourhome.co.uk