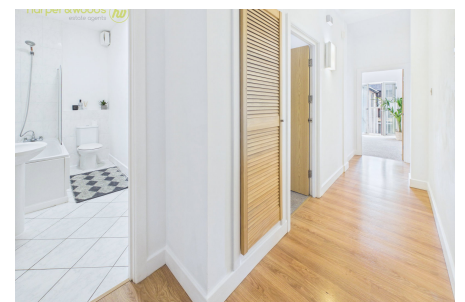


Village Mews, Wallasey Village

£135,000 Council Tax Band A EPC Rating B

 2  1  1



Sold with no chain, this first floor apartment in this modern purpose-build development, is perfect for a first time buyer who wants to drop in their furniture and enjoy! Freshly decorated throughout this two bedroom apartment really is immaculate. Set in a prime location in the heart of Wallasey Village within walking distance to the promenade, Harrison Park and handy amenities including many independent shops literally around the corner. Wallasey Grove Road train station is just over the road providing direct Merseyrail line to Liverpool. Interior: communal entrance, private hallway, living/dining room, kitchen, two bedrooms and bathroom. Complete with uPVC double glazing, efficient storage heating and hot water system. Internal inspection is a must to appreciate fully; contact the office today to organise your viewing!

Key Features

- Two Bed First Floor Apartment
- No Ongoing Chain
- Beautifully Presented
- uPVC Double Glazing
- A Must See
- EPC Rating B
- Council Tax Band A
-
-

