



18

16

haus
For Sale
haushomes.co.uk
01246 380535





16 Ashover Road

Old Tupton • Chesterfield • S42 6HJ

Guide Price £250,000 to £260,000

A well-presented three-bedroom semi-detached home offered with no onward chain, situated in the popular area of Old Tupton. The location provides convenient everyday amenities including local shops and supermarkets, along with reputable schools close by. Transport links are strong, with local bus services, easy car access to Chesterfield, Clay Cross and major road networks, and Chesterfield Railway Station just a short drive away. The area is also known for its nearby countryside walks and scenic routes, making it an attractive choice for a wide range of buyers. From the hallway, turning right leads into the cosy front-facing living room, featuring an open brick fireplace. Positioned to the rear of the property, the farmhouse-style kitchen-diner includes shaker-style cabinets, integrated appliances, and a charming fireplace with a log burner. The dining area offers space for a family table and benefits from double doors opening directly onto the rear garden. An internal door provides access to a useful storage cupboard, and the kitchen-diner flows naturally into the rear utility/boot room, which also has direct access to the garden. Upstairs, the property offers three bedrooms and a family bathroom. The main bedroom is a generous double overlooking the rear garden. Bedrooms two and three are positioned at the front; bedroom two is a well-sized double, while bedroom three is a single, ideal for a home office or nursery. The modern bathroom is part-tiled and fitted with a three-piece suite comprising a bath with overhead shower, sink and WC. Externally, the enclosed rear garden includes a patio area running along the side of the garden, leading to a long, flat lawn with a storage shed at the far end. To the front, the property benefits from a double driveway providing ample off-street parking.





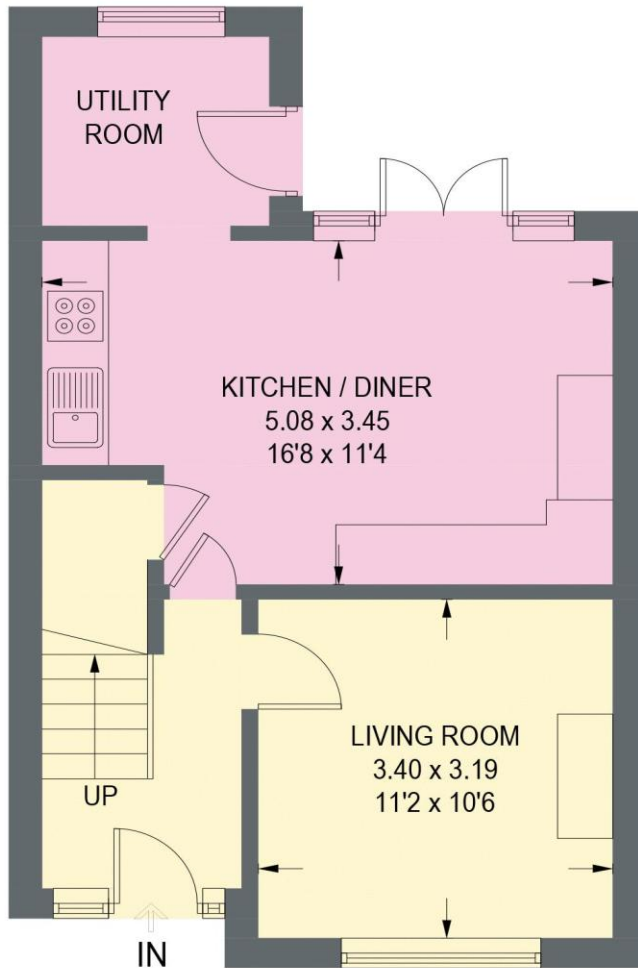
- Offered with No Upward Chain
- Three Bedroom Semi Detached House
- Cosy Living Room with Open Fireplace
- Farmhouse Style Shaker Kitchen Diner w/ Log Burner
- Ideal Rear Utility/Boot Room
- Three Good Sized Bedrooms
- Modern Three Piece Suite Bathroom
- Rear Garden w/ Patio & Shed
- Double Driveway Providing Off Street Parking
- Council Tax Band B/EPC Rating D



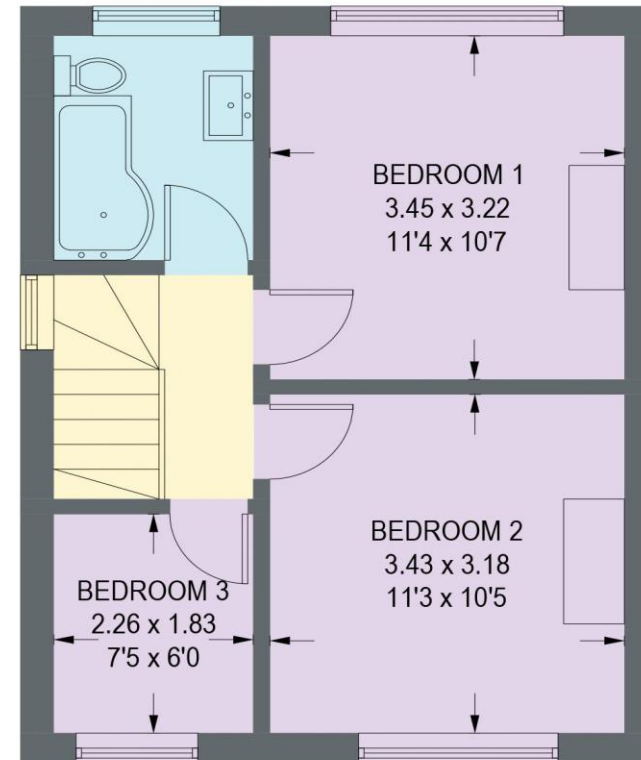


16 ASHOVER ROAD

APPROXIMATE GROSS INTERNAL AREA = 74.0 SQ M / 796.9 SQ FT



GROUND FLOOR
38.5 SQ M / 414.2 SQ FT



FIRST FLOOR
35.6 SQ M / 382.7 SQ FT

Illustration for identification purposes only, measurements are approximate, not to scale. (ID1286290)



haus

31 West Bars, Chesterfield, S40 1AG
chesterfield@haushomes.co.uk haushomes.co.uk

01246 380 535