



Apt 16, 10 Ladybower house Holyrood Avenue, Lodge Moor, Sheffield, S10

Saxton Mee

Apt 16, 10 Ladybower Lodge Moor

Guide Price

£170,000

GUIDE PRICE £170,000 - £180,000

NO CHAIN

Nestled within the highly desirable Lodgemoor area, this charming third-floor one-bedroom apartment presents a fantastic opportunity for first-time buyers or professionals seeking stylish, low-maintenance living with excellent access to local amenities and transport links.

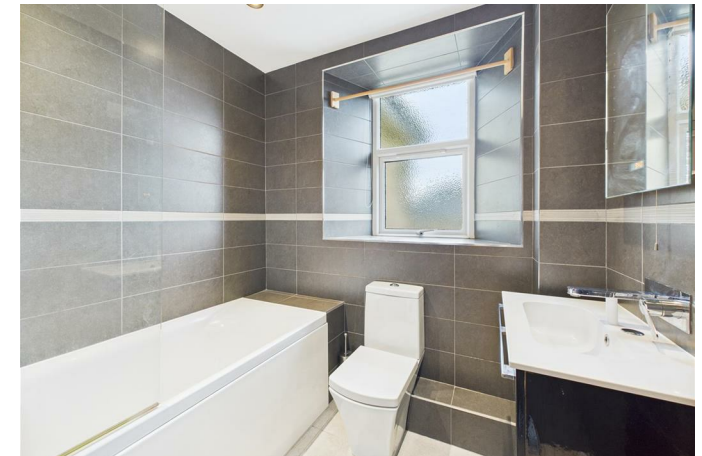
Situated in a well-maintained development, the property enjoys a peaceful setting with beautifully kept communal areas, an intercom entry system for added security, and the convenience of an allocated parking space.

Inside, the apartment features a bright and airy open-plan kitchen and lounge area, perfect for modern living and entertaining. The separate bathroom is well-appointed, and the overall layout provides a comfortable and practical living space.

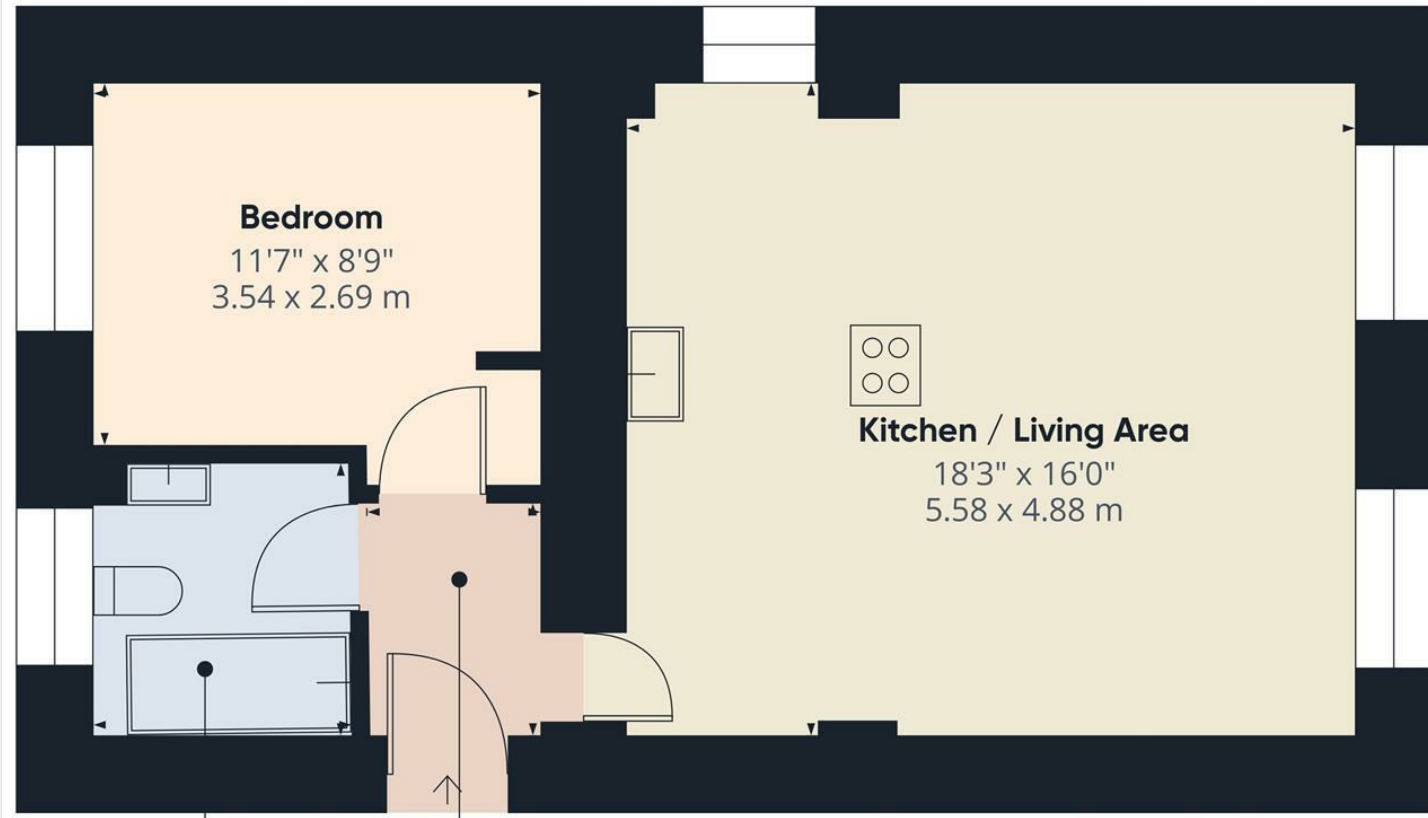
One of the standout features of this property is its superb location – with green spaces right on your doorstep, ideal for leisurely walks and outdoor activities, while still being just moments from shops, public transport, and other everyday conveniences.

Offered for sale with no onward chain, this is a fantastic opportunity to secure a lovely home in a sought-after area.

- Excellent Location
- Charming one bedroom apartment
- Lovely open-plan kitchen and living space
- Modern Bathroom
- Good size bedroom
- Allocated Parking Space
- EPC Rating: tbc
- Council Tax Band: C
- Viewings Via Saxton Mee Banner Cross







Approximate total area^m
497 ft²
46.1 m²

(1) Excluding balconies and terraces

While every attempt has been made to ensure accuracy, all measurements are approximate, not to scale. This floor plan is for illustrative purposes only.

Calculations are based on RICS IPMS 3C standard.

GIRAFFE360

While we endeavour to make our sales particulars fair, accurate and reliable, they are only a general guide to the property and, accordingly, if there is any point, which is of particular importance to you, please contact the relevant office. The Agents have not tested any apparatus, equipment, fittings or services and so cannot verify they are in working order. The buyer is advised to obtain verification. Please note all the measurement details are approximate and should not be relied upon as exact. All plans, floor plans and maps are for guidance purposes only and are not to scale. Under no circumstances should they be relied upon as exact or for use in planning carpets and other such fixtures, fittings or furnishings. YOUR HOME IS AT RISK IF YOU DO NOT KEEP UP REPAYMENTS ON A MORTGAGE OR OTHER LOAN SECURED ON IT. 'A Life Assurance policy may be requested.' 'Written Quotations of credit terms available on request.'

Banner Cross
T: 0114 268 3241
E: bannercross@saxtonmee.co.uk
www.saxtonmee.co.uk

Hathersage
T: 01433 650009
E: hathersage@saxtonmee.co.uk

Bakewell
T: 01629 815307
E: bakewell@saxtonmee.co.uk

Matlock
T: 01629 828250
E: matlock@saxtonmee.co.uk

