



Hawthorn Meadows

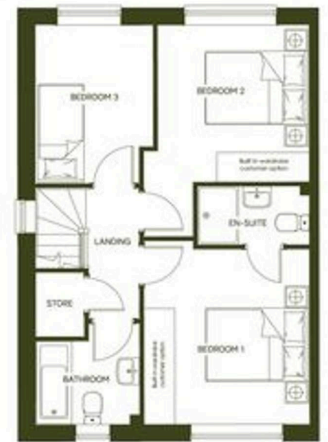
Development Plan

House Types

- The Hartford
- The Kingfisher
- The Honey
- The Oxford
- The Broadway
- The Westmorland

Variations

- Render Variant
- * Affordable Housing



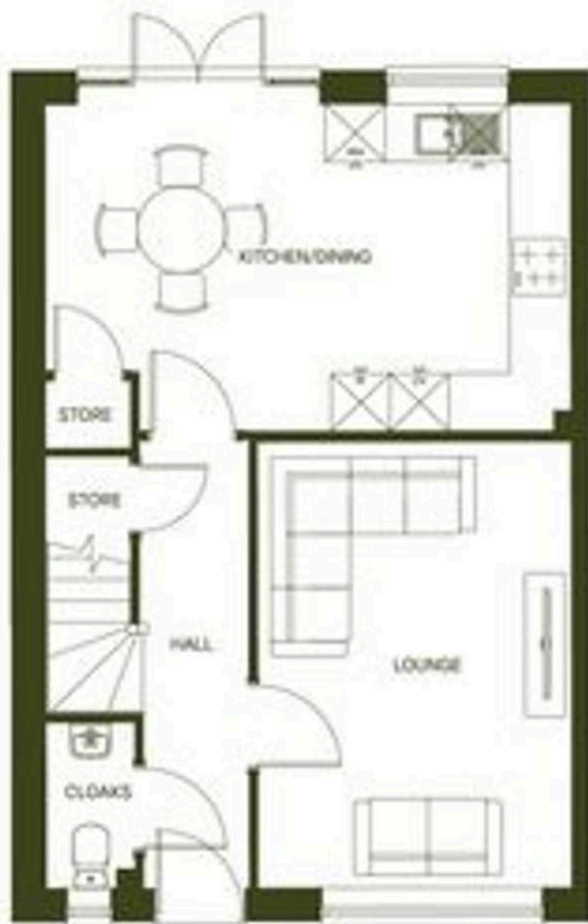
Castle Green



Plot 90– Hartford, Well Street, Buckley – CH7 2PQ

£288,000 Freehold

The three-bedroom Hartford is a thoughtfully designed home perfect for modern living. The ground floor features a bright and airy open-plan kitchen/dining area with French doors leading directly to the garden. A separate lounge at the front of the house offers a cosy retreat, while a combined WC and utility room provides added practicality without compromising on space. Upstairs, you'll find two double bedrooms and one single bedroom, offering flexibility for growing families, guests or a home office. The primary bedroom benefits from its own en-suite shower room for added comfort and privacy, while a well-appointed family bathroom serves the remaining bedrooms. With clever use of space throughout, the Hartford combines style and functionality in equal measure. Every detail has been considered, from the high specification fixtures to the thoughtfully planned layout, ensuring a home that is as functional as it is beautiful. With a 10 year NHBC warranty for complete peace of mind, this property represents a sound investment for years to come. Available with Help to Buy, offering an excellent opportunity for first-time buyers.



BRITISH
PROPERTY
AWARDS
2025
★★★★★

GOLD WINNER

ESTATE AGENT
IN FLINTSHIRE



BRITISH
PROPERTY
AWARDS
2025
★★★★★

GOLD WINNER

ESTATE AGENT
IN DENBIGHSHIRE

YOUR FREE PROPERTY REPORT



WE OFFER FREE ADVICE

MORTGAGES - SURVEYS - SOLICITORS

