



smarthomes

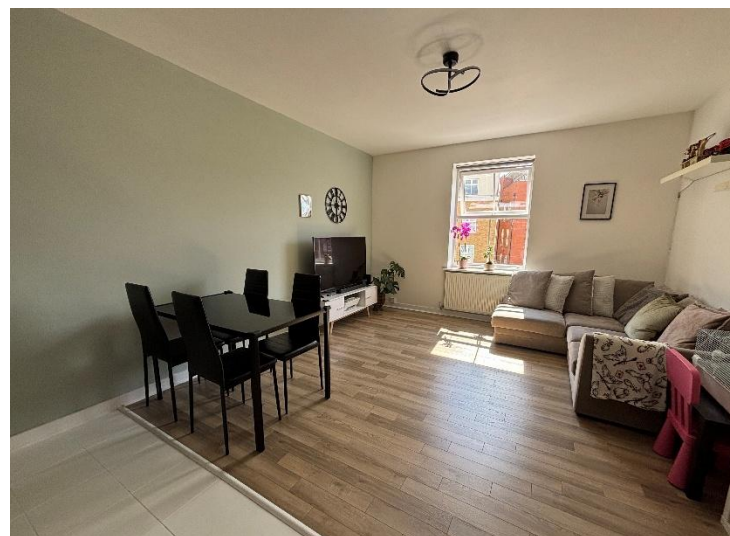
South Terrace

Dickens Heath, Solihull

- A Spacious Second Floor Apartment
- Two Double Bedrooms
- Open Plan Lounge Diner & Kitchen
- Two Underground Allocated Parking Spaces

£210,000

Current EPC Rating 80 (C)
Current Council Tax Band C





Property Description

An extremely spacious second floor apartment benefitting from delightful communal gardens, communal hallway and lift, two underground allocated parking spaces, patio terrace, open plan lounge diner & kitchen, two double bedrooms, en-suite shower room and bathroom

Dickens Heath village offers a contemporary life style with a superb range of family homes and apartments, restaurants, offices, shops, medical surgeries as well as a local library, village hall and village green to provide that community lifestyle. Set within easy access to the M42 and train stations the village is ideal for families and commuters.



Rooms & Measurements

Entrance Hallway

Open Plan Lounge Diner & Kitchen
5.71m x 3.99m (18'9" x 13'1")

Bedroom One
4.39m x 2.79m (14'5" x 9'2")

En Suite Shower Room
1.47m x 2.26m (4'10" x 7'5" (max)

Bedroom Two
3.07m x 2.24m (10'1" x 7'4")

Family Bathroom

Tenure

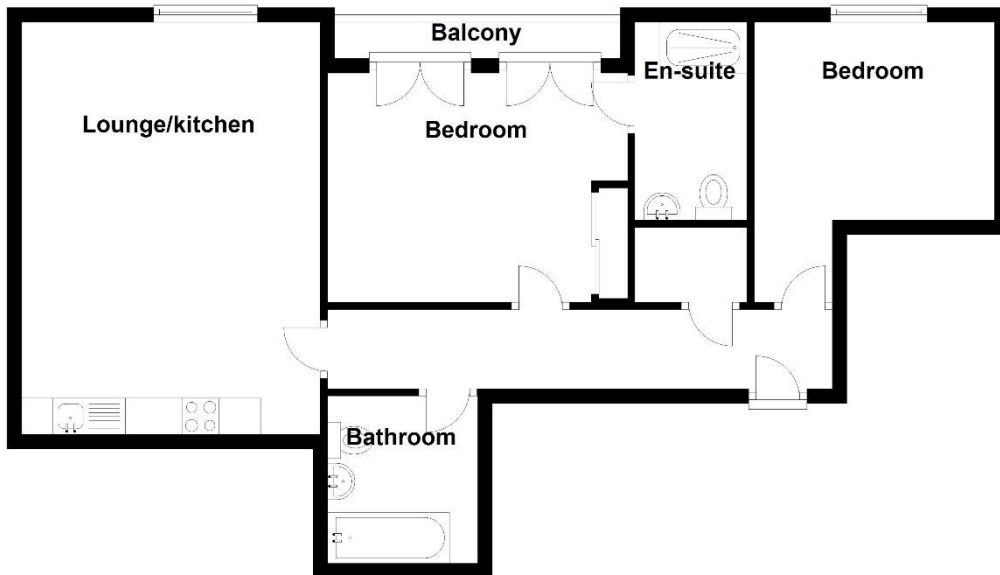
We are advised by the vendor that the property is leasehold with approx. 976 years remaining on the lease, a service charge of approx. £3,588 per annum and a ground rent of approx. £202 per annum. We would advise all interested parties to obtain verification through their own solicitor or legal representative

EPC supplied by Vendor
Current council tax band – C



Second Floor

Approx. 66.9 sq. metres (719.9 sq. feet)



Total area: approx. 66.9 sq. metres (719.9 sq. feet)

316 Stratford Road
Shirley
Solihull
B90 3DN

www.smart-homes.co.uk
0121 744 4144

Agents Note: Whilst every care has been taken to prepare these particulars, they are for guidance purposes only. We believe all information to be correct from the day of marketing however, we advise and recommend that your conveyancer and or surveyor verifies all information supplied. All measurements are approximate are for general guidance purposes only and whilst every care has been taken to ensure their accuracy, they should not be relied upon and potential buyers are advised to recheck the measurements.