



Coles Green Road, NW2

£519 Per week

This two bedroom third floor flat has a spacious open plan living area with a modern fitted kitchen, two good size double bedrooms one with en-suite shower room, a tiled family bathroom, a well sized balcony and good storage space throughout.

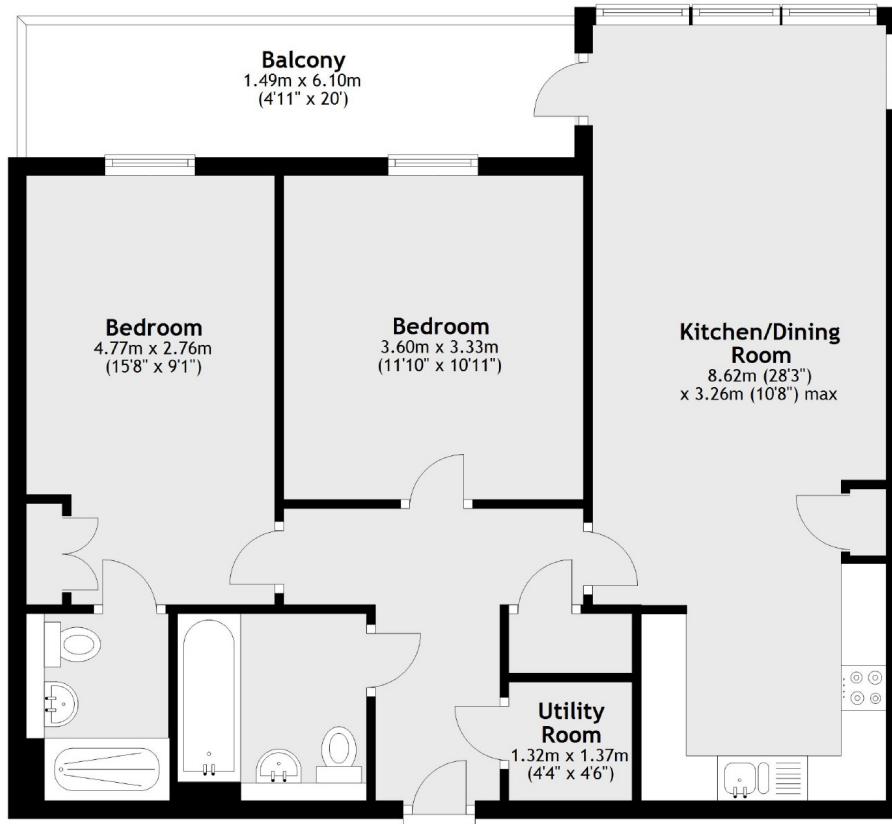
Coles Green Court is ideally situated with a variety of amenities in Dollis Hill, Willesden, Cricklewood and Brent Cross. The A5, A406 and M1 are also nearby allowing easy access in and out of London.

Features

- Two Bedrooms
- Two Bathrooms
- Open Plan Reception
- Balcony
- Allocated Parking
- Lift Access

Coles Green Road,
London, NW2

Third Floor



Main area: Approx. 71.8 sq. metres (773.1 sq. feet)
Plus balconies, approx. 9.7 sq. metres (104.6 sq. feet)