







14 Upland Rise

Walton • Chesterfield • S40 2DD

Guide Price £425,000 to £450,000

Completely renovated four-bedroom detached family home, located within a quiet cul-de-sac in the highly regarded Walton area of Chesterfield. The location offers excellent access to everyday amenities, including a range of local shops, cafés and services, with Chesterfield town centre also within easy reach. Transport connections are strong, with regular bus services, convenient access to major road networks, and Chesterfield train station easily accessible. The area is well known for its well-regarded schools and proximity to green spaces and outdoor leisure facilities, including Queen's Park, making this an ideal family home. The front door opens into a small porch, which leads through into the main hallway. To the right of the hallway is a useful internal door providing access to the integral single garage. Continuing along the hallway, the first door on the left leads into the living room, a modernised front-facing space featuring a contemporary media wall and fireplace. The second door on the left is a convenient ground-floor WC, with a useful storage cupboard positioned opposite. Straight ahead from the hallway is the fully modernised open-plan kitchen and living space. The kitchen is fitted with shaker-style units, integrated appliances, and a spacious central island offering additional storage and seating. There is also space for freestanding appliances, along with a door leading into a separate utility room with further cupboards and appliance space. The kitchen opens into the dining and living area, which provides generous space for family dining and seating, enhanced by skylights and doors opening directly onto the rear garden. Living area sees a great additional family space with feature log burner. To the first floor are four bedrooms and the family bathroom. Two generously sized double bedrooms are positioned to the front of the property, with bedroom one featuring modern wall panelling and bedroom two currently used as a dressing room. Bedrooms three and four are both well-proportioned single rooms located to the rear, making ideal children's bedrooms. The bathroom is finished with a modern three-piece suite comprising a bath, wash basin and WC. Externally, the rear garden has been attractively landscaped and features decking running around the garden, with a patio seating area to the right. The central section is laid to lawn, while to the left is a shed with additional log storage space. To the front of the property is a pebbled driveway providing off-street parking for multiple vehicles, along with a small lawned area and access to the integral single garage.





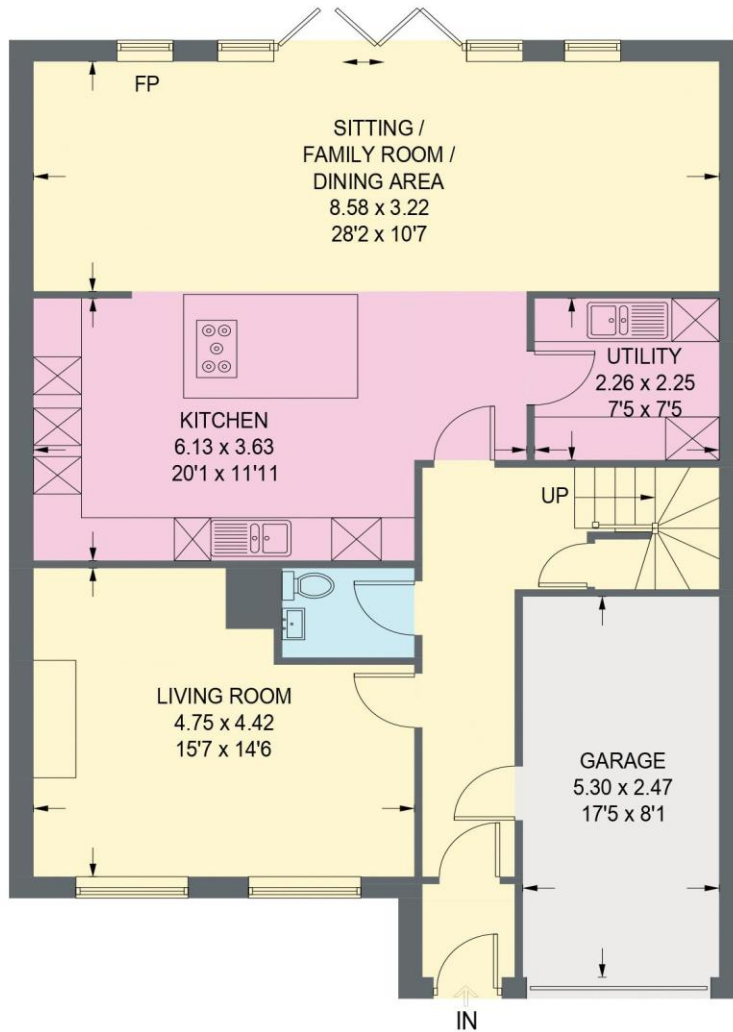
- Completely Renovated Four Bedroom Detached House
- Cul de Sac Location - Great Family Home
- Strong Transport Links & Well Regarded Schools
- Living Room w/ Modern Media Wall
- Kitchen w/ Modern Units & Island
- Open Plan Kitchen Diner & Skylights
- Four Well Proportioned Bedrooms & Family Bathroom
- Landscaped Rear Garden w/ Patio & Shed
- Pebbled Driveway & Integral Single Garage
- Council Tax Band D/EPC Rating D



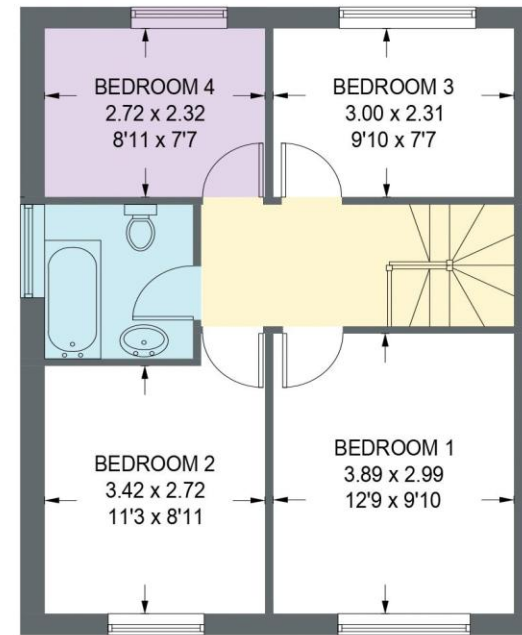


14 UPLAND RISE

APPROXIMATE GROSS INTERNAL AREA = 147.9 SQ M / 1591.7 SQ FT (INCLUDING GARAGE)



**GROUND FLOOR = 101.4 SQ M / 1091.4 SQ FT
(INCLUDING GARAGE)**



FIRST FLOOR = 46.5 SQ M / 500.3 SQ FT

Illustration for identification purposes only, measurements are approximate, not to scale. (ID1294592)



haus

31 West Bars, Chesterfield, S40 1AG
chesterfield@haushomes.co.uk haushomes.co.uk

01246 380 535