



Whitehall Gardens, W3

£785,000

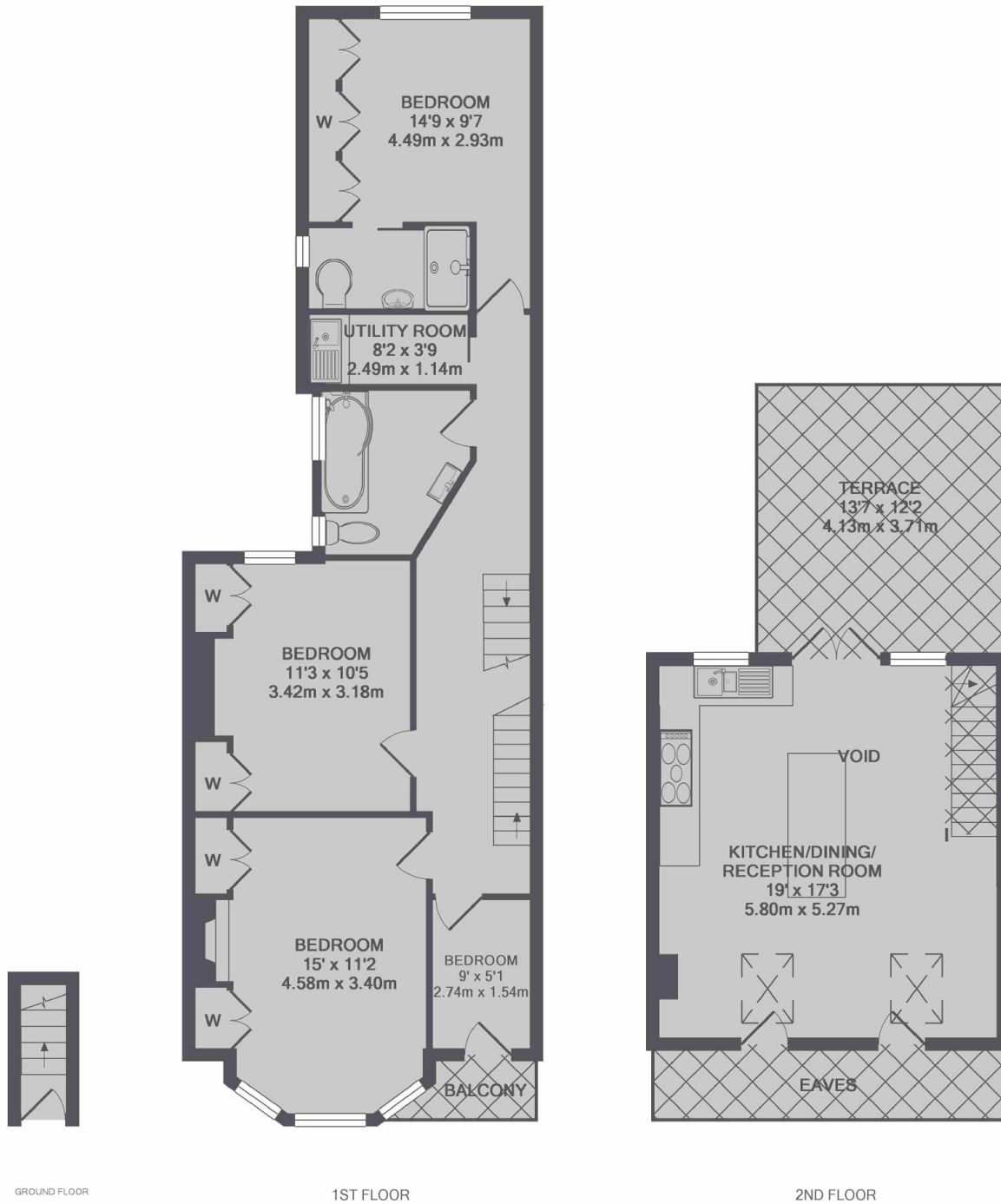
This Edwardian period conversion is on a quiet, tree-lined residential street spanning over 1070 sq ft of living space, Set over two floors with three good size bedrooms, two bathrooms and a separate utility room. The house is filled with period features, high ceiling along with a modern touch, The open-plan reception and kitchen is filled natural light, leading onto a private south-facing roof terrace and will be sold with no onward chain.

Whitehall Gardens is sought after residential tree lined road located approximately 0.4 miles from both Ealing Common and Acton Town Stations offering the District and Piccadilly Underground lines. West Acton Station is approximately 0.5 miles away, and provides the Central Line service. With access to the M4 & M40 motorways.

Features

- Three Bedrooms
- Two Bathrooms
- Roof Terrace
- Split-Level
- Share Of Freehold
- No Onward Chain

Whitehall Gardens, London, W3



TOTAL APPROX. FLOOR AREA 1071 SQ.FT. (99.5 SQ.M.)