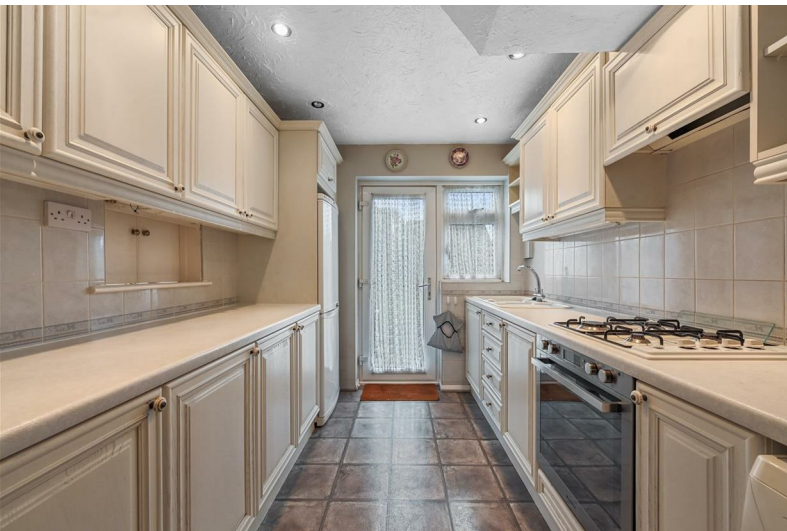




26 Magnolia Close

Chelmsford, CM2 9HU

Asking price £450,000



26 Magnolia Close

Chelmsford, CM2 9HU

Asking price £450,000



Entrance Hall

Entrance door, stairs to first floor.

Kitchen

11'2 x 7'9 (3.40m x 2.36m)

Window and door to rear, range of fitted units with an integrated electric oven. Space and plumbing for washing machine and fridge/freezer. Work surfaces incorporate sink unit and gas hob with extractor over.

Lounge/Diner

22'5 x 11'7 (6.83m x 3.53m)

Window to front and patio doors to rear, feature fireplace, radiator.

Conservatory

11'9 x 11'3 (3.58m x 3.43m)

Windows and doors to rear, radiator.

First Floor

Landing

Window to side, stairs to ground floor.

Bedroom One

12'8 x 11'2 (3.86m x 3.40m)

Window to rear, fitted wardrobes, radiator.

Bedroom Two

11'5 x 9'6 (3.48m x 2.90m)

Window to rear, fitted cupboard, radiator

Bedroom Three

9'7 x 6'5 (2.92m x 1.96m)

Window to front, radiator, storage cupboard.

Bathroom

6'7 x 5'8 (2.01m x 1.73m)

Window to rear, shower cubicle, wash hand basin, close coupled WC, radiator.

Exterior

Driveway

Block Paved Driveway leading to garage

Detached Garage

19'8 x 10'3 (5.99m x 3.12m)

Up and over door.

Large Rear Garden

Paved patio area, side access, remainder laid to lawn with fencing to boundaries and various, trees, flowers and shrubs.



