



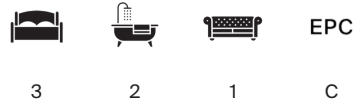
## PALACE COURT

Notting Hill W2



# PALACE COURT

A beautifully proportioned first floor lateral apartment within a distinguished Victorian building on one of Bayswater's most prestigious tree lined streets



Local Authority: City of Westminster

Council Tax band: H

Tenure: Share of Freehold with approximately 969 years remaining

Service charge: £7,351 per annum, reviewed every year, next review due 2026

Guide Price: £2,500,000



The property benefits from superb natural light throughout, enhanced by tall sash windows and a desirable aspect across Palace Court. The apartment centres around a magnificent reception room and an adjoining dining room, creating an exceptional space for both formal entertaining and everyday living. Original architectural details, including ornate cornicing and deep mouldings, reinforce the timeless character of the building. The kitchen is thoughtfully positioned and provides convenient access for service from the reception and dining areas. The accommodation comprises three double bedrooms, each well sized, including a particularly spacious principal bedroom suite with a large walk in wardrobe and private bathroom. The flat also has a further full bathroom and separate W/C. This first floor position further enhances the property's sense of volume and presence within the building. The building also benefits from a lift and porter.

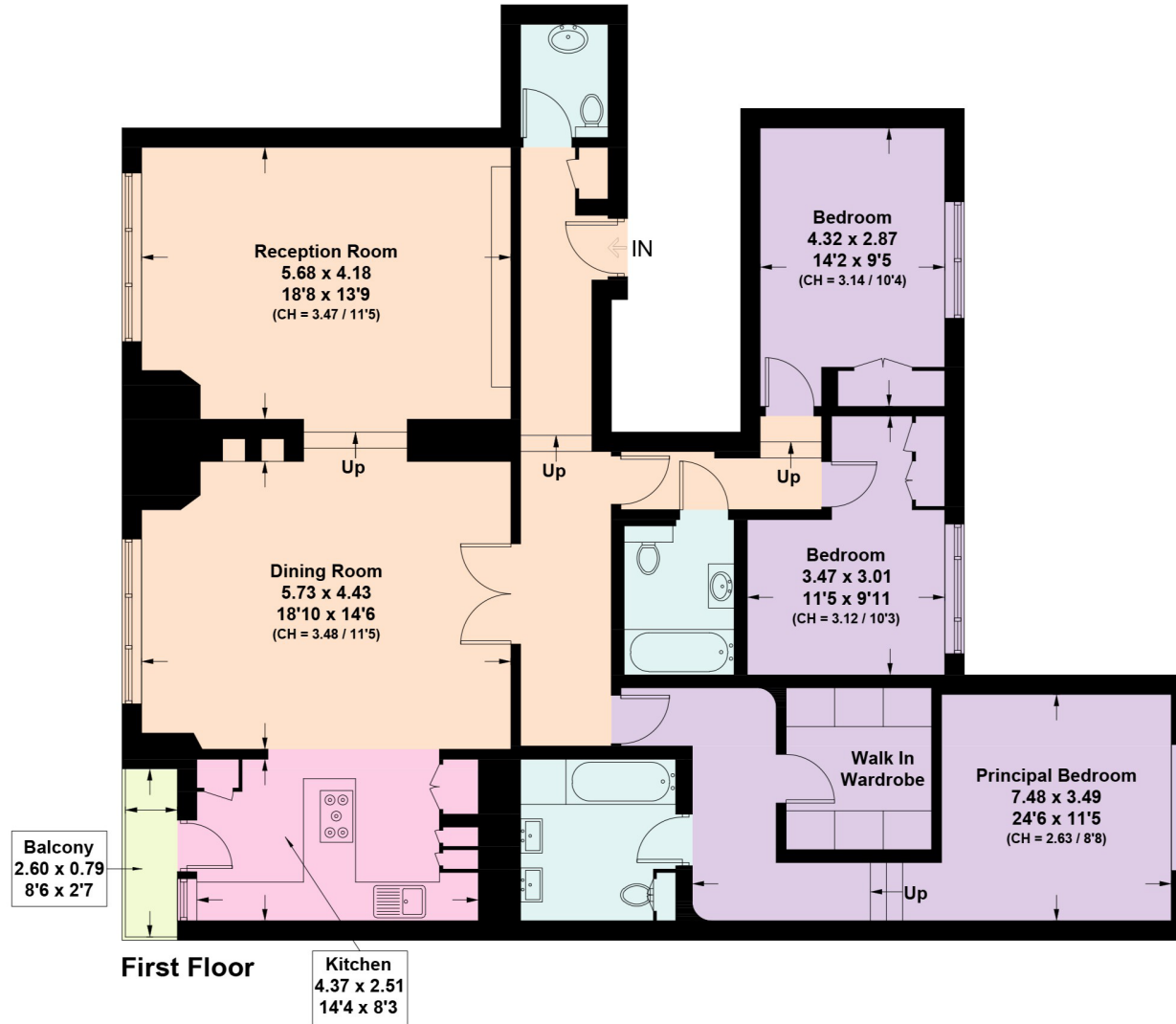






# Palace Court, W2

Approximate Gross Internal Area = 152.1 sq m / 1637 sq ft  
Including Limited Use Area (2.1 sq m / 23 sq ft)



Approximate Gross Internal Area = 152.1 sq m / 1,637 sq ft

This plan is for layout guidance only. Not drawn to scale unless stated. Windows and door openings are approximate. Whilst every care is taken in the preparation of this plan, please check all dimensions, shapes and compass bearings before making any decisions reliant upon them. (ID767266)

We would be delighted  
to tell you more.

**Jack Thomas**

Jack.thomas@knightfrank.com

+44 7870 379 526

**Notting Hill Sales**

294 Westbourne Grove

W11 2PS

[knightfrank.co.uk](https://www.knightfrank.co.uk)

Your partners in property

1. Particulars: These particulars are not an offer or contract, nor part of one. You should not rely on statements given by Knight Frank in the particulars, by word of mouth or in writing ("information") as being factually accurate about the property, its condition or its value. Neither Knight Frank nor any joint agent has any authority to make any representations about the property, and accordingly any information given is entirely without responsibility on the part of Knight Frank. 2. Material Information: Please note that the material information is provided to Knight Frank by third parties and is provided here as a guide only. While Knight Frank has taken steps to verify this information, we advise you to confirm the details of any such material information prior to any offer being submitted. If we are informed of changes to this information by the seller or another third party, we will use reasonable endeavours to update this as soon as practical. 3. Photos, Videos etc: The photographs, property videos and virtual viewings etc. show only certain parts of the property as they appeared at the time they were taken. Areas, measurements and distances given are approximate only. 4. Regulations etc: Any reference to alterations to, or use of, any part of the property does not mean that any necessary planning, building regulations or other consent has been obtained. A buyer must find out by inspection or in other ways that these matters have been properly dealt with and that all information is correct. 5. Fixtures and fittings: A list of the fitted carpets, curtains, light fittings and other items fixed to the property which are included in the sale (or may be available by separate negotiation) will be provided by the Seller's Solicitors. 6. VAT: The VAT position relating to the property may change without notice. 7. To find out how we process Personal Data, please refer to our Group Privacy Statement and other notices at <https://www.knightfrank.com/legals/privacy-statement>.

Particulars dated March 2026. Photographs and videos dated March 2026. All information is correct at the time of going to print. Knight Frank is the trading name of Knight Frank LLP. Knight Frank LLP is a limited liability partnership registered in England and Wales with registered number OC305934. Our registered office is at 55 Baker Street, London W1U 8AN. We use the term 'partner' to refer to a member of Knight Frank LLP, or an employee or consultant. A list of members names of Knight Frank LLP may be inspected at our registered office. If you do not want us to contact you further about our services then please contact us by either calling 020 3544 0692, email to [marketing.help@knightfrank.com](mailto:marketing.help@knightfrank.com) or post to our UK Residential Marketing Manager at our registered office (above) providing your name and address.