



HUNTERS[®]
HERE TO GET *you* THERE

5 Moor View, Consett, DH8 5TG

HUNTERS

5 Moor View, Consett, DH8 5TG

Asking Price £149,950

Presenting an immaculate two-bedroom semi-detached house, ideally positioned for those seeking convenience and comfort. This elegant property, perfectly suited for first-time buyers, investors, or families, exudes a welcoming ambience from the moment you step inside.

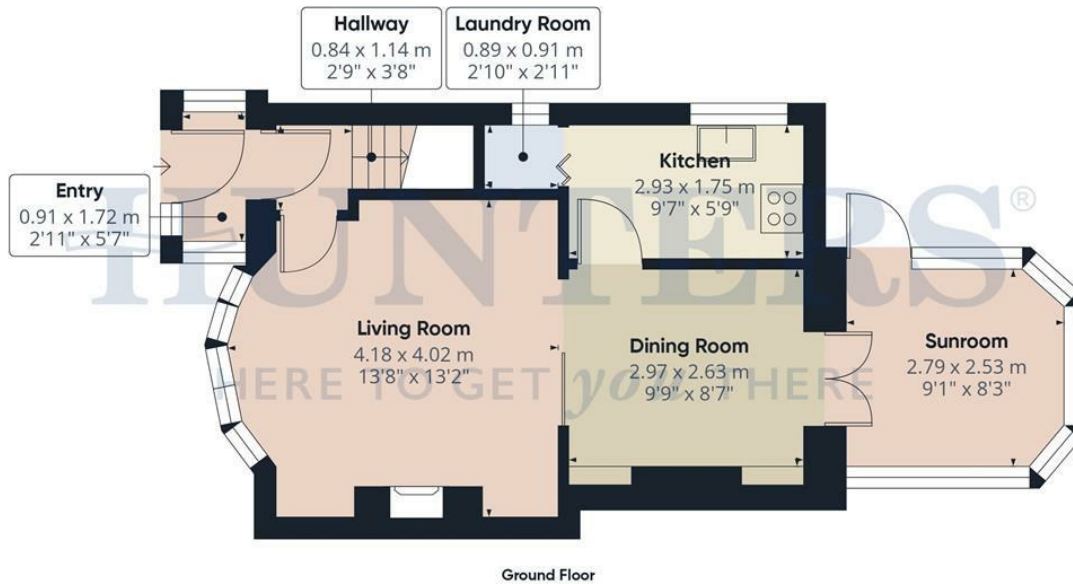
Upon entry, you are greeted by two attractive reception rooms, both featuring large windows that flood the space with natural light. The first reception room boasts a charming fireplace and striking wood floors, creating an inviting area for relaxation or entertaining guests. The second reception room also benefits from wood flooring and showcases delightful garden views, offering a peaceful environment to unwind.

The thoughtfully designed kitchen also enjoys an abundance of natural light, ensuring a bright and pleasant space for preparing meals. Upstairs, you will find two spacious double bedrooms, including a master bedroom complete with built-in wardrobes for excellent storage. The modern bathroom is finished to a high standard and features a heated towel rail for added luxury.

Externally, the property offers a private garden, providing the perfect spot for outdoor dining or gardening enthusiasts. The location enhances the property's appeal, offering a peaceful and convenient setting. The surrounding area is well-served by local amenities, and the property is ideally situated for commuting to work or school.

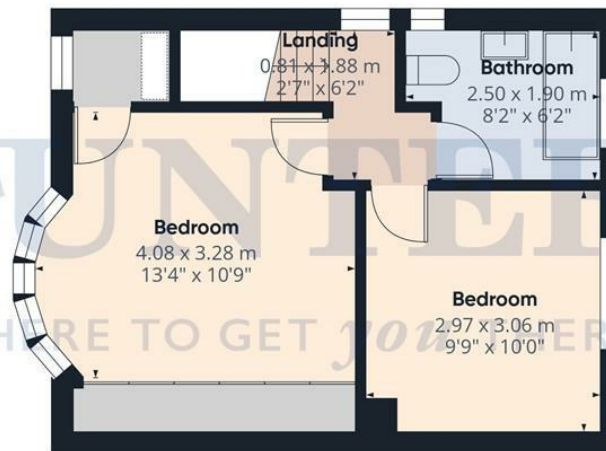
With a reputation for excellence, our team is committed to providing a seamless and enjoyable experience throughout the entire process. We highly recommend this property to anyone looking for a high-quality home in a desirable location.

Hunters Consett 15 Victoria Road, Consett, DH8 5BQ | 01207 593838
consett@hunters.com | www.hunters.com



Approximate total area⁽¹⁾

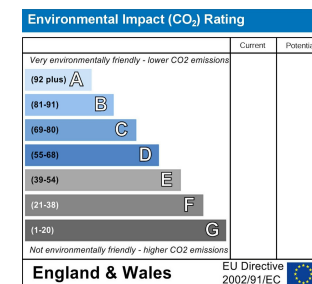
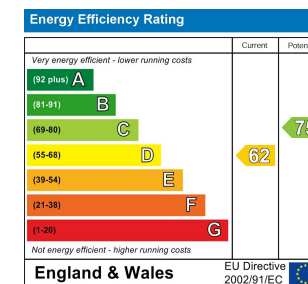
73 m²
785 ft²




(1) Excluding balconies and terraces

Calculations reference the RICS IPMS 3C standard. Measurements are approximate and not to scale. This floor plan is intended for illustration only.

GIRAFFE360



Energy Efficiency Rating

| | Current | Potential |
|--|----------------------------|---|
| <i>Very energy efficient - lower running costs</i> | | |
| (92 plus) A | | |
| (81-91) B | | |
| (69-80) C | | 75 |
| (55-68) D | 62 | |
| (39-54) E | | |
| (21-38) F | | |
| (1-20) G | | |
| <i>Not energy efficient - higher running costs</i> | | |
| England & Wales | EU Directive 2002/91/EC |  |

These particulars are intended to give a fair and reliable description of the property but no responsibility for any inaccuracy or error can be accepted and do not constitute an offer or contract. We have not tested any services or appliances (including central heating if fitted) referred to in these particulars and the purchasers are advised to satisfy themselves as to the working order and condition. If a property is unoccupied at any time there may be reconnection charges for any switched off/disconnected or drained services or appliances - All measurements are approximate. If you are thinking of selling your home or just curious to discover the value of your property, Hunters would be pleased to provide free, no obligation sales and marketing advice. Even if your home is outside the area covered by our local offices we can arrange a Market Appraisal through our national network of Hunters estate agents.



HUNTERS
HERE TO GET YOU THERE



HUNTERS
HERE TO GET YOU THERE



HUNTERS
HERE TO GET YOU THERE



HUNTERS
HERE TO GET YOU THERE









5
Wood View