



Bruce Road, CR4

£335,000

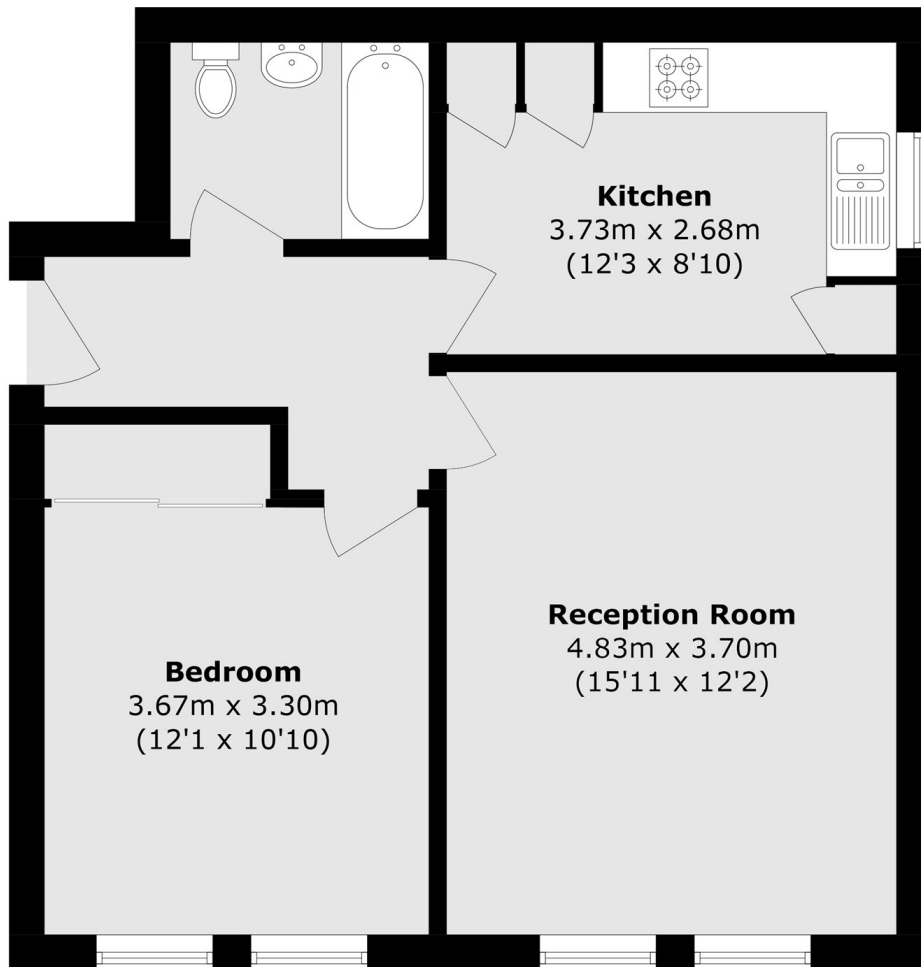
A spacious and well arranged one double bedroom apartment with accommodation comprised of a large separate reception room with a comfortable seating area, a generous fitted kitchen with space for dining, a large double bedroom furnished with fitted wardrobes and a three piece family bathroom.

Bruce Road is a quiet residential street with easy access to Tooting Overground (Thameslink) providing quick train routes in to central London, the Northern Line Tube is also located close by in Tooting Broadway. The property has an excellent array of local shopping amenities nearby, including the popular Tooting Market. Figge's Marsh is located at the end of Bruce road offering a large open green space.

Features

- One Double Bedroom
- Large Kitchen
- Separate Reception Room
- Desirable Location
- Long Lease
- Spacious Apartment

Bruce Road, Mitcham, CR4



Total area (approx.): 54 sq. m (581.3 sq. ft)