



## COBALT PLACE, SW11

£3,000 per month

Open plan reception  
Underfloor heating  
Private balcony  
Two bathrooms  
Great transportation links  
Bike storage

@marshandparsons  
marshandparsons.co.uk

MARSH &  
PARSONS

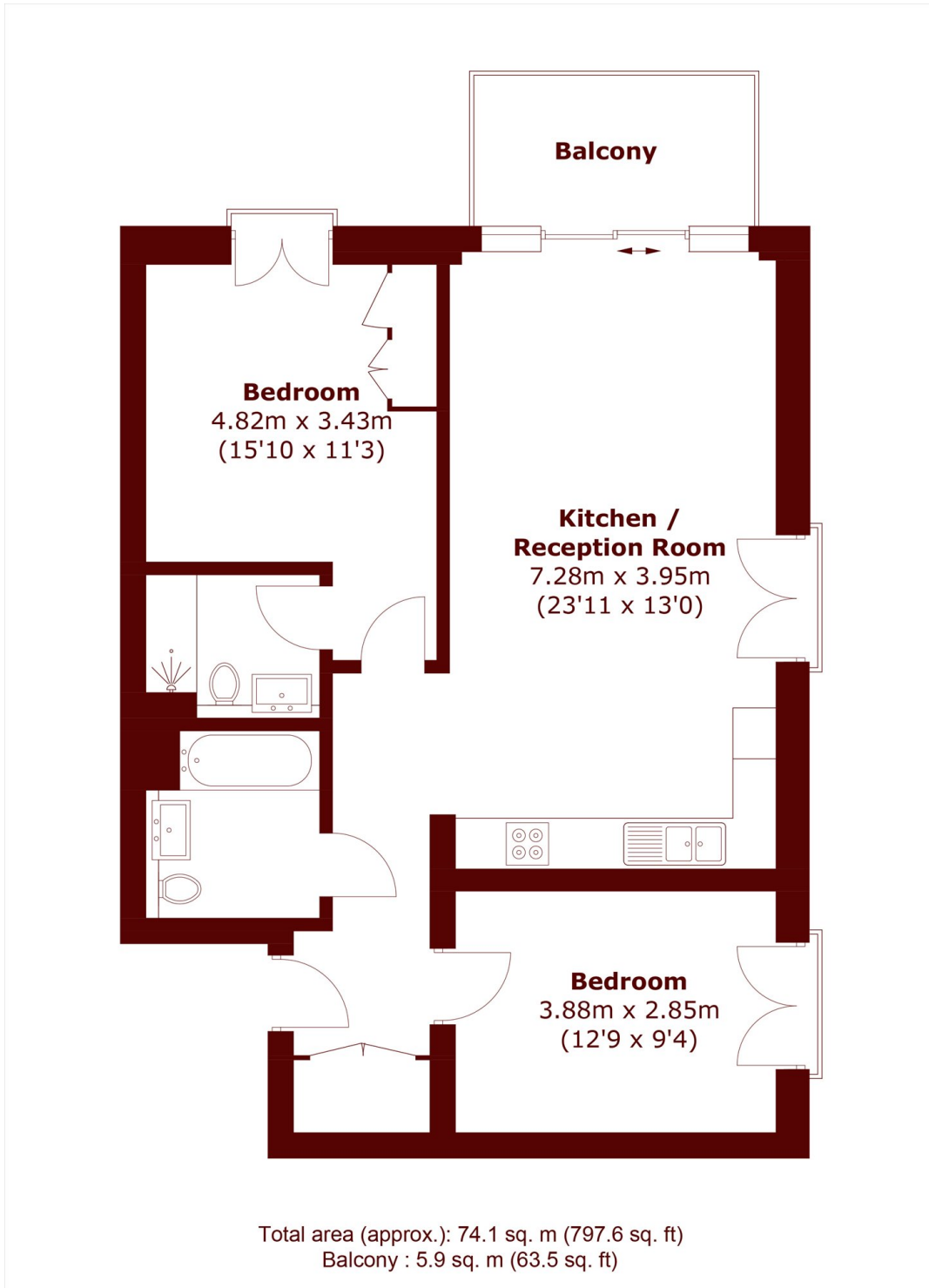


# ABOUT THE PROPERTY

This stunning apartment is beautifully presented throughout. The property boasts a large open-plan kitchen reception room with modern and integrated appliances and ample space for entertaining and dining, a master bedroom with Ensuite shower room, a greatly sized second bedroom and a contemporary family bathroom with shower over bath. The apartment further benefits from a private balcony with views of the city. Cobalt place development benefits from double-glazed windows, fresh air ventilation systems, under floor heating, wooden floors, lift access, secure bike storage, phone entry system and gated security entrance.



# STEP INSIDE COBALT PLACE



**Battersea**  
020 7228 9292

Energy Rating: C We aim to make our particulars both accurate and reliable. However, they are not guaranteed; nor do they form part of an offer or contract. If you require clarification on any points then please contact us, especially if you're traveling some distance to view. Please note that appliances and heating systems have not been tested and therefore no warranties can be given as to their good working order

**MARSH &  
PARSONS**