



**15 Baddow Hall Crescent, CM2 7BY**  
Chelmsford

Offers Over  
**£375,000**

**Bedrooms: 2, Bathrooms: 1, Receptions: 2**

Positioned within an established and well-regarded residential setting in Great Baddow, this well-presented two-bedroom bungalow is offered for sale with no onward chain and provides a practical single-storey layout, versatile reception space and a mature rear garden, complemented by a detached garage.

The accommodation is arranged to provide a natural flow between living spaces, with a well-proportioned living room forming the centre of the home. The property includes a kitchen and separate dining space, creating a clear and functional layout suited to everyday living. To the rear, the conservatory provides an additional reception area, enjoying views over the garden and offering a light-filled space that can be used throughout the year.

The two bedrooms are positioned to the front of the property, providing flexibility for sleeping accommodation, guest use or home working. A bathroom serves the home, while a separate utility area adds further practicality.

Externally, the rear garden is a notable feature, arranged with lawn, established planting, patio areas and a covered seating space, creating a well-balanced outdoor environment suitable for both relaxation and gardening. A detached garage provides additional storage or parking.

The property may offer scope for loft extension, subject to the necessary planning permissions and consents.

Great Baddow remains one of Chelmsford's most consistently popular residential areas, offering a balance of everyday convenience and access to open space. Within close reach are a range of local shops, independent amenities and essential services, supporting day-to-day living without the need to travel far.

Chelmsford city centre is easily accessible, providing a wider selection of shopping, dining and leisure facilities, along with mainline rail connections into London. The surrounding area also offers access to green spaces and countryside walks, adding to the overall appeal for those seeking a quieter residential setting with good connectivity.

Other property info:

No onward chain

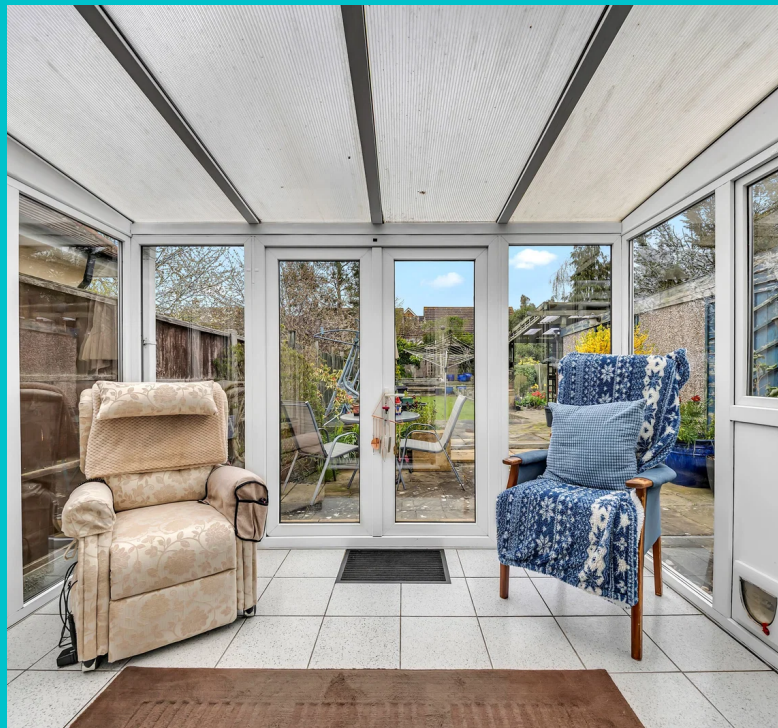
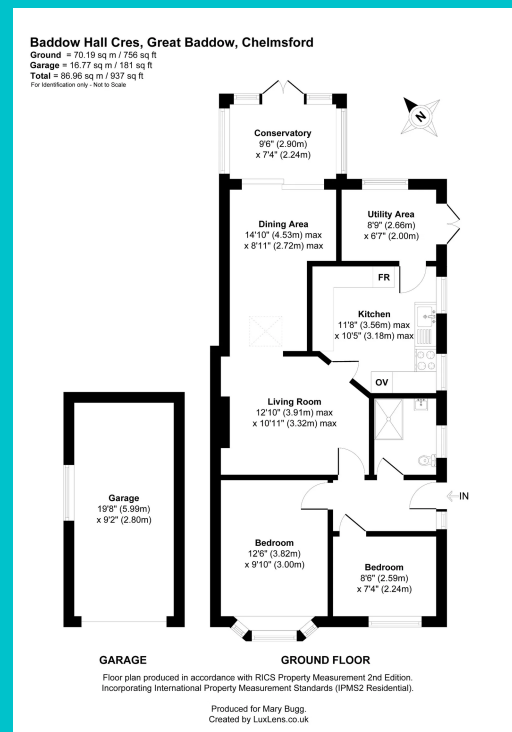
Council Tax band: C

#### Important information on Anti-Money Laundering Check

We are required by law to conduct Anti-Money Laundering checks on all parties involved in the sale or purchase of a property. We take the responsibility of this seriously in line with HMRC guidance in ensuring the accuracy and continuous monitoring of these checks. Our partner, Move Butler will carry out the initial checks on our behalf. They will contact you and where possible a biometric check will be sent to you electronically only once your offer has been accepted.

As an applicant, you will be charged a non-refundable fee of £30 (inclusive of VAT) per buyer for these checks. The fee covers data collection, manual checking, and monitoring. You will need to pay this amount direct to Move Butler and complete all Anti-Money Laundering checks before your offer can be formally accepted.

You will also be required to provide evidence of how you





**Mary Bugg**

52 West Lawn, Galleywood, Chelmsford

01245 94 84 84

[mary.bugg@exp.uk.com](mailto:mary.bugg@exp.uk.com)

<https://marybugg.exp.uk.com/>