



Woodlands Farm Back Lane, Shipbourne – TN11 9PP

Guide Price £900,000 – £925,000

est. 1828
bracketts



A unique detached timber-framed barn conversion, originally constructed in 2015, offering beautifully presented and highly versatile accommodation arranged over two set within an attractive semi-rural position in the sought-after village of Shipbourne.

This distinctive home combines contemporary living with characterful barn-style architecture, creating a light-filled and spacious environment ideally suited to modern family life. The accommodation is arranged around a welcoming reception and dining hall, which provides an impressive entrance and leads through to a superb open-plan kitchen and family room. Designed as the heart of the home, this generous space enjoys delightful views across the rear garden and offers excellent areas for both everyday living and entertaining. A separate utility room provides additional practicality.

To the first floor, there are five well-proportioned rooms together with two shower rooms, offering flexible accommodation that can be adapted to suit a variety of requirements, whether for family living, guest accommodation, home working or hobbies.



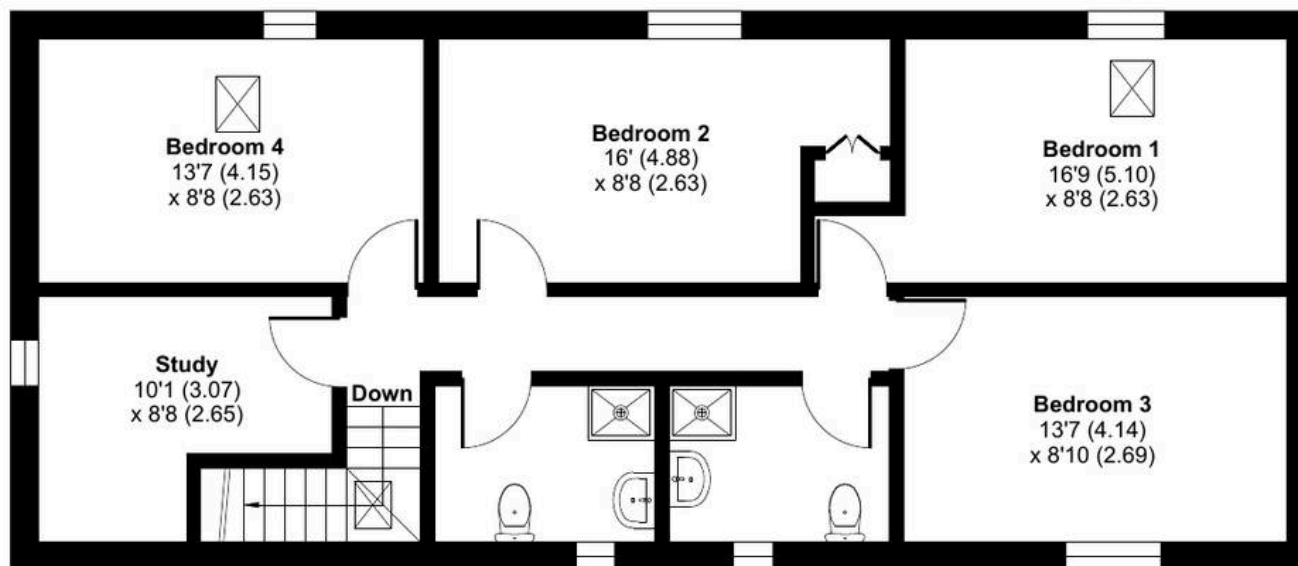
Outside, the property is approached via a private driveway providing ample off-road parking. The front garden is mainly laid to lawn, while to the rear a substantial garden enjoys a pleasant outlook and a high degree of privacy. A large terrace spans the width of the property, creating an ideal setting for al fresco dining and outdoor entertaining, with the remainder of the garden laid principally to lawn.



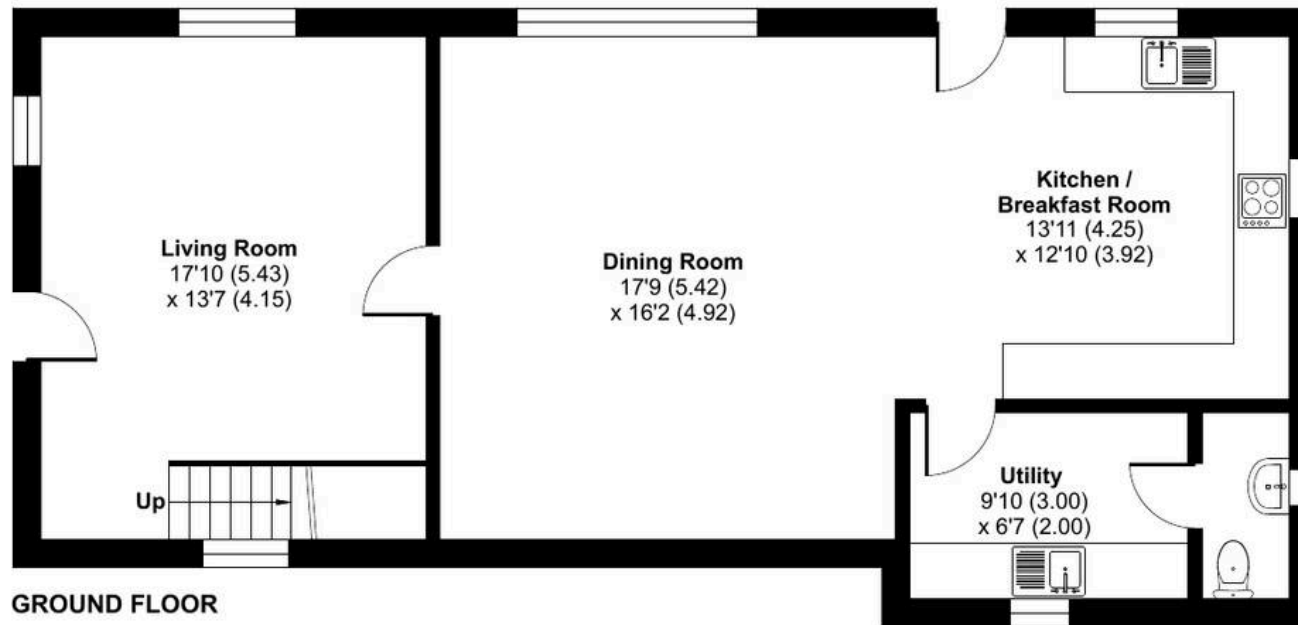
Woodlands Farm, Back Lane, Shipbourne, Tonbridge, TN11

Approximate Area = 1603 sq ft / 148.9 sq m

For identification only - Not to scale



FIRST FLOOR



GROUND FLOOR

