



Nevin, Epping Green

In Excess of £525,000



Hammond
& Smith
Hammond
& Smith

Nevin

Epping Green, Epping

Council Tax band: E

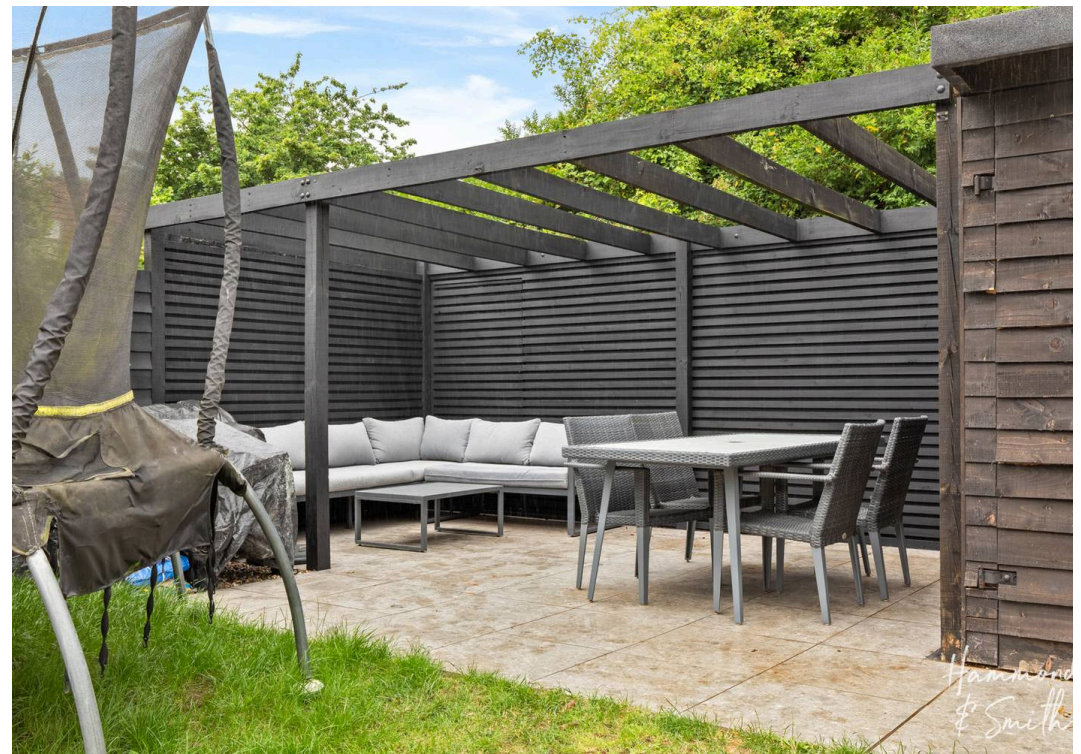
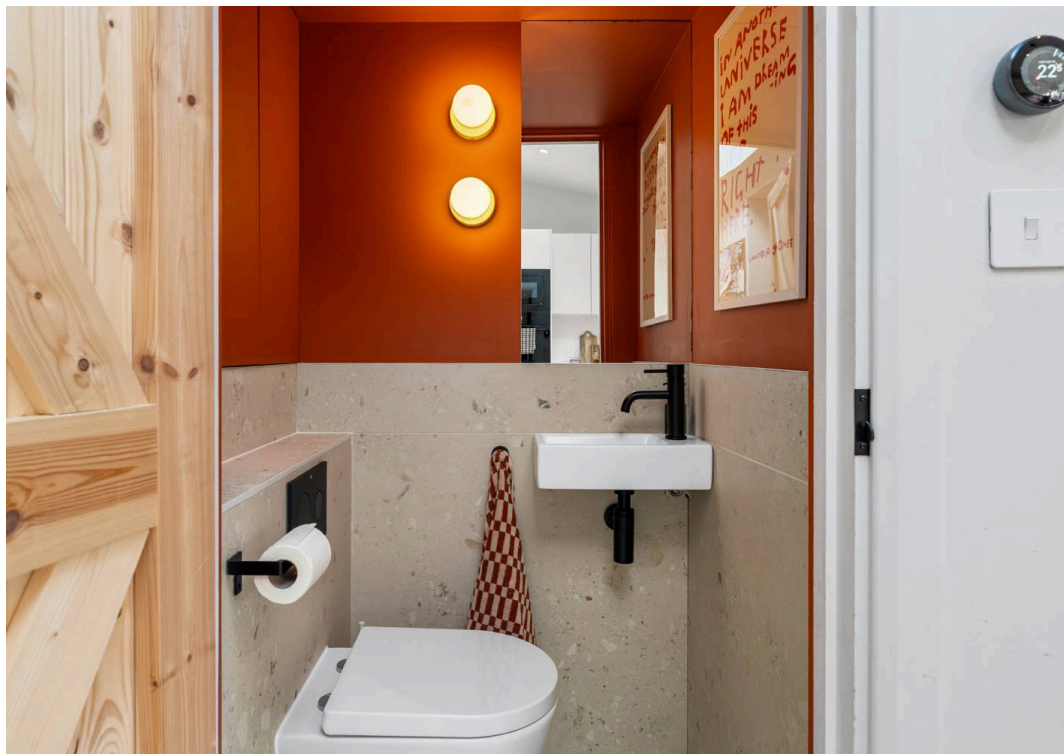
Tenure: Freehold

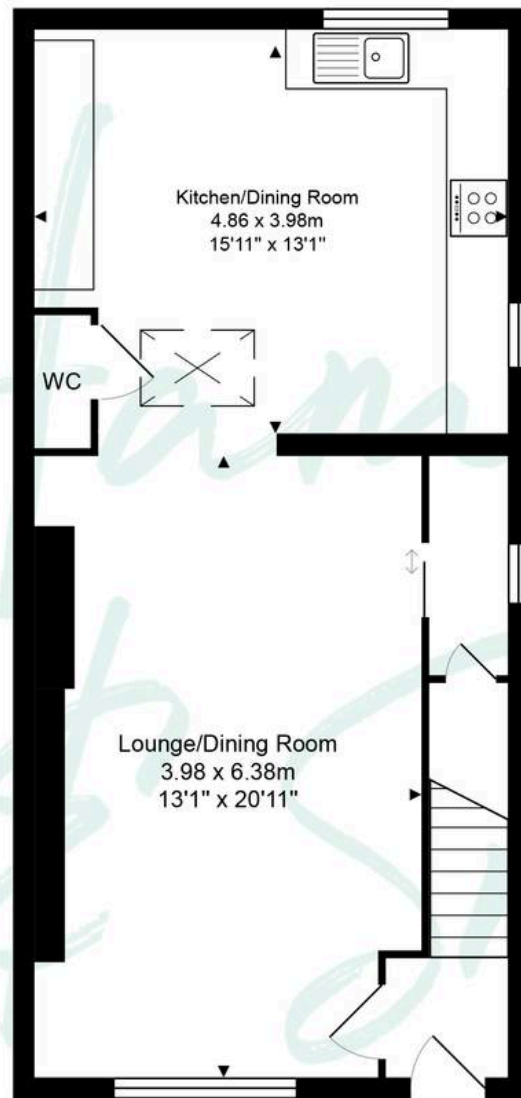
EPC Energy Efficiency Rating: D

EPC Environmental Impact Rating:

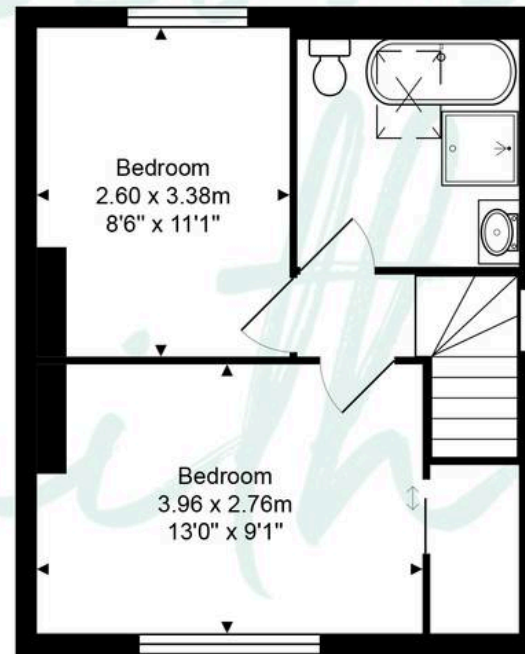
- Beautiful cottage home
- Renovated throughout
- Crisp modern interiors
- Stunning family bathroom
- Village location
- Short drive to Epping station and high street
- Downstairs WC







Ground Floor



First Floor

Total Area: approx. 83.2 m² ... 895 ft²

THE FLOORPLAN IS FOR ILLUSTRATIVE PURPOSES ONLY AND IS NOT TO SCALE.
Measurements and features are approximate and may differ from the actual property. Verify all details independently; no liability is accepted for errors or omissions.

Property marketing provided by www.fotomarketing.co.uk