



HOUSE - TOWNHOUSE

Bingley Court
Canterbury City Centre
Canterbury
CT1 2SW

£2,275 Per Month

- PREMIUM STUDENT HOUSE
- FIVE DOUBLE BEDROOMS
- TWO BALCONIES
- TWO BATHROOMS
- HIGH SPEED INTERNET
- BILLS PACKAGE AVAILABLE
- FULLY FURNISHED



absolute living

5 BED HOUSE - TOWNHOUSE LOCATED IN CANTERBURY

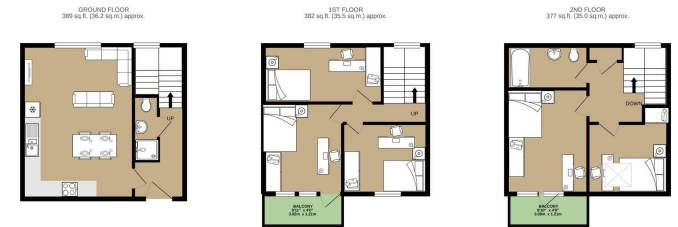
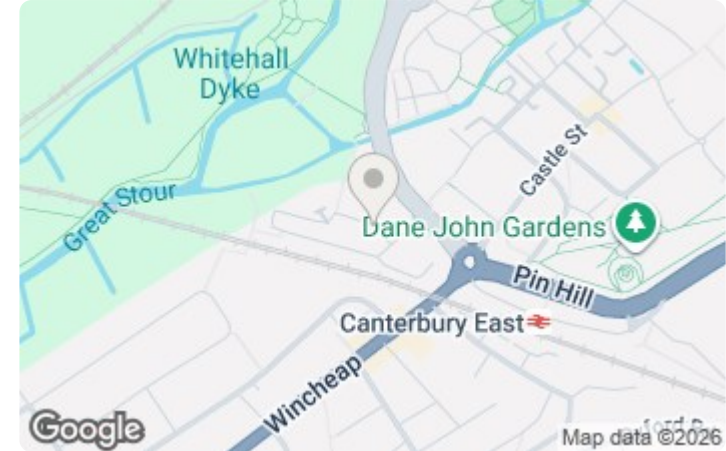
BINGLEY COURT CT1. BLOCK VIEWING WEDS 20TH MAY 2026 - CALL 07960 777543. Price is per person per month for a whole group of 5. Five bedroom house over three floors with two bathrooms. All the bedrooms are of an equal size and two bedrooms benefit from private balconies. On the ground floor there is a spacious fully equipped kitchen/ reception. Located 30 secs from Aldi and an 8 minute walk into the centre of Canterbury whilst being close for the Unibus and St Augustines. This is a posh student house, the photos don't show wardrobes/ desks and chest of drawers but these will be provided. High speed wifi and fully refurbished in 2023 this home is waiting for your group. Available from the beginning July 2026 for a 12 month tenancy. No admin fees - call to view. Suitable for students!



Full Description

Modern open plan kitchen/ reception with large fridge/ freezer, washer dryer and dishwasher. Available from 3rd July 2026, bills package available. The house is modern; bills package available to cover Gas, Electricity, Water, Waste Water, High Speed Internet and TV Licence - please email or call to discuss. canterbury@absoluteliving.co.uk.

Call us on
020 3002 9002
hello@absoluteliving.co.uk



TOTAL FLOOR AREA: 1148 sq.ft. (106.7 sq.m.) approx.
While every effort has been made to ensure the accuracy of the floor plan contained here, measurements of actual buildings, rooms and any other detail are approximate and not necessarily related to any actual dimensions or measurements. This plan is for illustrative purposes only and should be used as such by any prospective purchaser. The accuracy of the floor plan and any other detail is not guaranteed.
Made with Mergeo (2020)

| Energy Efficiency Rating | Current | Potential | Environmental Impact (CO ₂) Rating | Current | Potential |
|---|-------------------------|-----------|---|-------------------------|-----------|
| Very energy efficient - lower running costs | | | Very environmentally friendly - lower CO ₂ emissions | | |
| (92 plus) A | | | (82 plus) A | | |
| (81-91) B | | | (61-81) B | | |
| (69-80) C | | | (49-60) C | | |
| (55-68) D | | | (35-48) D | | |
| (39-54) E | | | (21-34) E | | |
| (21-38) F | | | (11-20) F | | |
| (1-20) G | | | (1-20) G | | |
| Not energy efficient - higher running costs | | | Not environmentally friendly - higher CO ₂ emissions | | |
| England & Wales | EU Directive 2002/91/EC | | England & Wales | EU Directive 2002/91/EC | |

Agents Note: Whilst every care has been taken to prepare these particulars, they are for guidance purposes only. All measurements are approximate and are for general guidance purposes only and whilst every care has been taken to ensure their accuracy, they should not be relied upon and potential buyers are advised to recheck the measurements.

absoluteliving