



Guide Price
£290,000

Freehold

3x  1x  1x 

**Gregory Close, Kemsley,
Sittingbourne, Kent,
ME10**

OVER 60?

Secure this property
for up to **59% less!**

Wards
Helping you move forwards



Main features

- End of terrace house with driveway and garage
- Situated in a cul-de-sac location
- Close to local park for quiet walks
- Ideal for first time buyers and buy-to-let investors alike
- Chain free

Accommodation

GROUND FLOOR

Hallway

Lounge: 15'0 x 12'1 (4.58m x 3.69m)

Kitchen/Breakfast Area: 15'4 x 9'8 (4.68m x 2.95m)

FIRST FLOOR

Landing

Bedroom 1: 19'5 x 12'6 (5.92m x 3.81m)

Bedroom 2: 12'5 x 9'0 (3.79m x 2.75m)

Bedroom 3: 9'4 x 7'4 (2.85m x 2.24m)

Wet Room

OUTSIDE

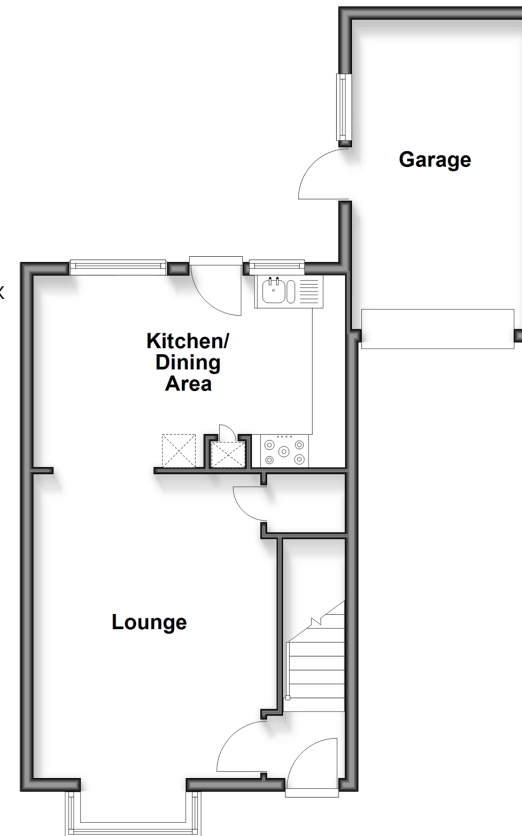
Front Garden

Driveway & Garage

Rear Garden

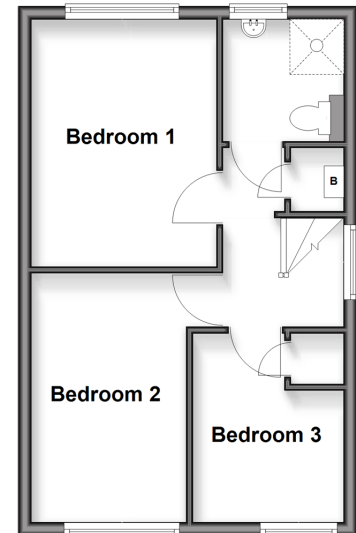
Ground Floor

Approx. 49.1 sq. metres (528.2 sq. feet)



First Floor

Approx. 36.2 sq. metres (389.3 sq. feet)



Call Sittingbourne - 01795 427272 ■ wardsofkent.co.uk

■ Through a Homewise Home For Life Plan people aged 60+ can secure this property for up to 59% less, by purchasing a Lifetime Lease



11739021/20260319/MC1/MC1