



Price

£2,100 PCM

Fees Apply



Available 30/04/26

Balston Road
Maidstone ME14

Wards

Helping you move forwards



Main Features

Four Bedroom Semi-Detached House

Electric Car Charging Point

Driveway

Side Gated Access

Connections To M2, M20 and A229

Immaculate Throughout



Deposit required is £2,423.08
Maidstone District - Council Tax Band Tax Band E

Renting a property is a big commitment and we recommend that you visit the local authority website and these websites which offer helpful information and advice about letting

www.gov.uk/government/publications/how-to-rent

www.gov.uk/private-renting

www.wardsofkent.co.uk/renting/tenancy-fees-individuals/

www.gov.uk/green-deal-energy-saving-measures

Call Maidstone 01622 675064 ■ wardsofkent.co.uk

IMPORTANT INFORMATION: Please contact our Lettings Team who will confirm the total costs involved in renting this property. For clarification, we wish to inform the prospective tenant that we have prepared these details as a general guide. The agent has not carried out a detailed survey nor tested the services, appliances, or specific fittings (unless otherwise stated), and no warranty can be given as to their condition. All room measurements are taken at floor level. We strongly recommend that all the information which we provide about the property is verified by yourself and your advisers. The contents of this publication are © Wards, 2015. Wards is a trading name of Arun Estates Limited Registered in England No. 2597969

Accommodation

Hallway

Kitchen/Diner 4.72m x 2.89m

Cloakroom 1.85m x 0.97m

Living Room 5.11m x 3.46m

Stairs & 1st Landing

Bedroom 4 3.00m x 2.31m

Bedroom 2 4.74m x 2.71m

Bedroom 3 3.44m x 2.77m

Family Bathroom 2.23m x 1.86m

Stairs & 2nd Landing

Bedroom 1 3.67m x 3.44m

En-suite 1.56m x 1.46

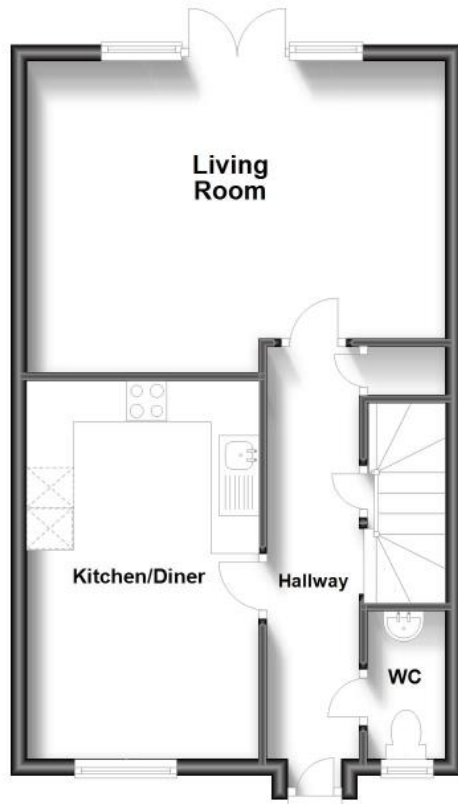
Garden

Driveway



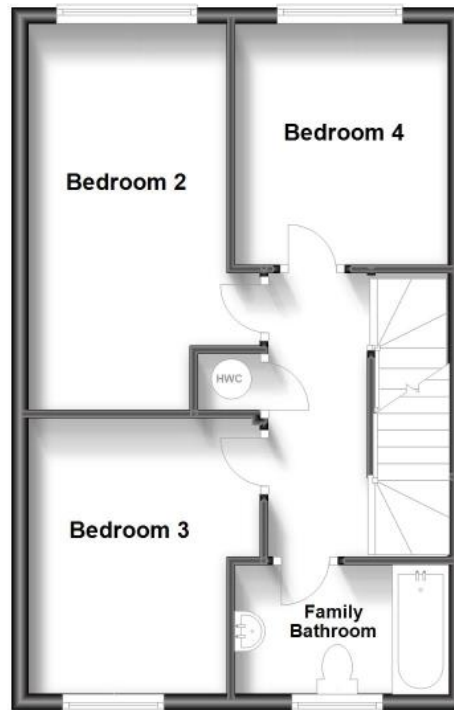
Ground Floor

Approx. 45.2 sq. metres (486.5 sq. feet)



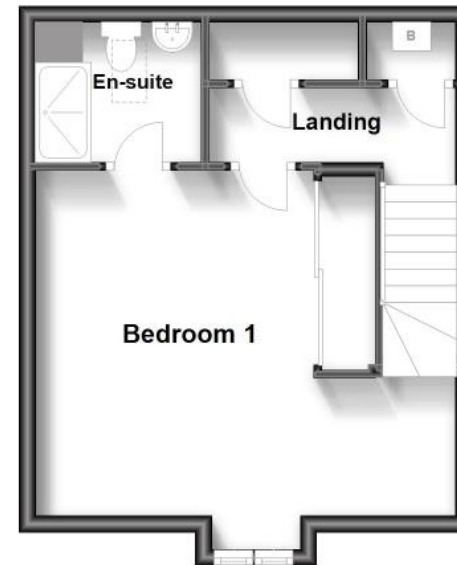
First Floor

Approx. 44.1 sq. metres (474.7 sq. feet)



Second Floor

Approx. 32.8 sq. metres (352.9 sq. feet)



Total area: approx. 122.1 sq. metres (1314.1 sq. feet)