



Guide Price
£600,000

Freehold

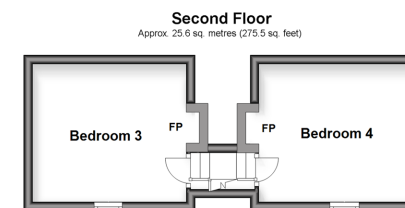
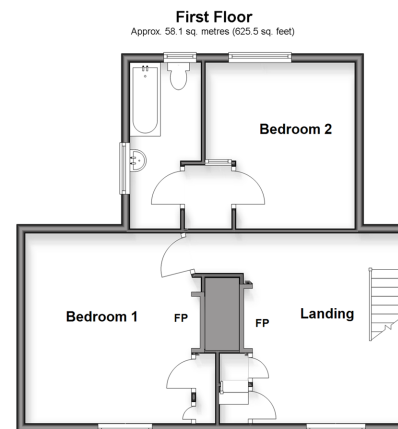
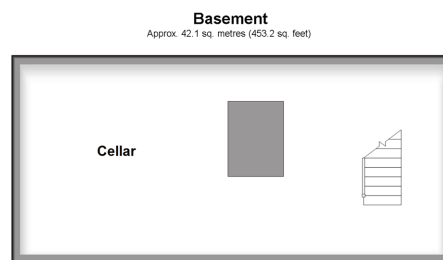
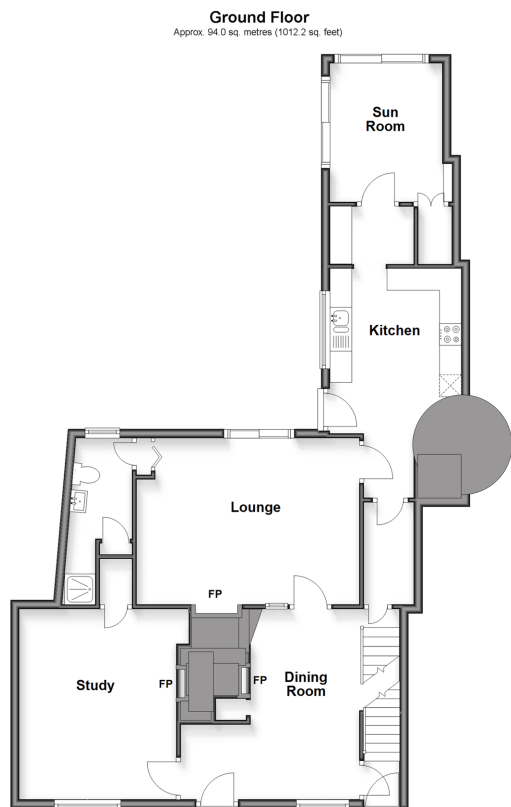
4x  2x  3x 

**St. Margaret's Street,
Rochester, Kent, ME1**

OVER 60?

Secure this property
for up to **59% less!**

Wards
Helping you move forwards



Accommodation

GROUND FLOOR

Dining Room: 13'8 x 8'8 (4.17m x 2.64m)
Study: 13'10 x 11'11 (4.22m x 3.63m)
Lounge: 17'2 x 12'2 (5.24m x 3.71m)
Kitchen: 10'4 x 9'8 (3.15m x 2.95m)
Sun Room: 10'2 x 9'5 (3.10m x 2.87m)
Shower Room

BASEMENT

Cellar : 22'2 x 11'5 (6.76m x 3.48m)

FIRST FLOOR

Landing: 14'8 x 11'7 (4.47m x 3.53m)
Bedroom 1: 15'9 x 14'1 (4.80m x 4.30m)
Bedroom 2: 12'3 x 5'3 (3.74m x 1.60m)
Bathroom

SECOND FLOOR

Bedroom 3: 11'6 x 11'2 (3.51m x 3.41m)
Bedroom 4: 12'9 x 11'1 (3.89m x 3.38m)

OUTSIDE

Rear Garden



Main features

- No forward chain
- Huge established rear garden
- Grade 2 listed 18th century house in conservation area
- Large cellar
- Located in one of Rochester's most prestigious roads



Nearest Schools

Primary Schools: St Margaret's at Troy Town CofE Voluntary Controlled Primary 0.4 miles

Secondary Schools: King's School, Rochester 0.6 miles



Transport Information

Train Stations: Strood 1.2 miles, Rochester 1.3 miles, Chatham 1.6 miles



Address

St. Margaret's Street, Rochester, Kent, ME1



Directions

For directions to this property please contact us.



Call Rochester Branch 01634 830925 ■ wardsofkent.co.uk



- If buying to let, the energy rating will need to be improved to at least 'E' rating before you can let the property
- Appliances & services are untested, dimensions are approximate and floor plans are not to scale

- Legal advice should be taken to verify fixtures/fittings, planning, alterations and/or lease details
- Through a Homewise Home For Life Plan people aged 60+ can secure this property for up to 50% less, by purchasing a Lifetime Lease.

11529940/20251126/DG/AB