



40 Whitworth Avenue
Corby, NN17 1DL



Simpson West

Located within the highly sought after Lloyds area is this rarely available mid terrace property which is being offered for sale with NO CHAIN. Although in need of updating the accommodation comprises of a reception hall, living room, kitchen, and bathroom/WC.

The first floors provides two double bedrooms and features include gas central heating and double glazing. Outside to the front is a large garden maily laid to lawn with potential to create off road parking for several vehicles and there is also a good-sized easy maintenance rear garden. An early visit is highly recommended. Energy Rating D. Council Tax Band A.

£149,950



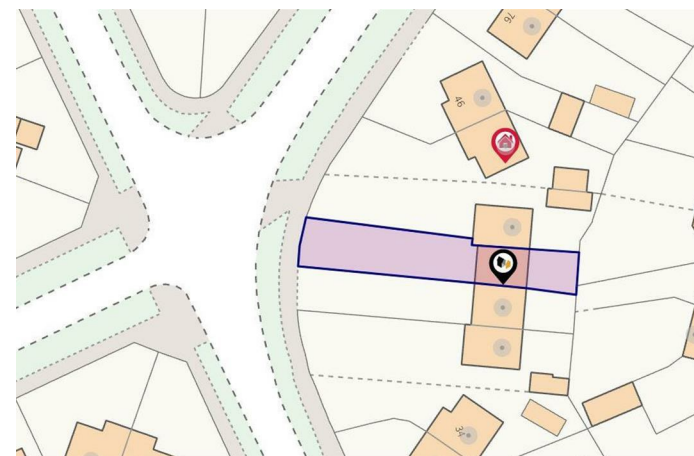
2



1

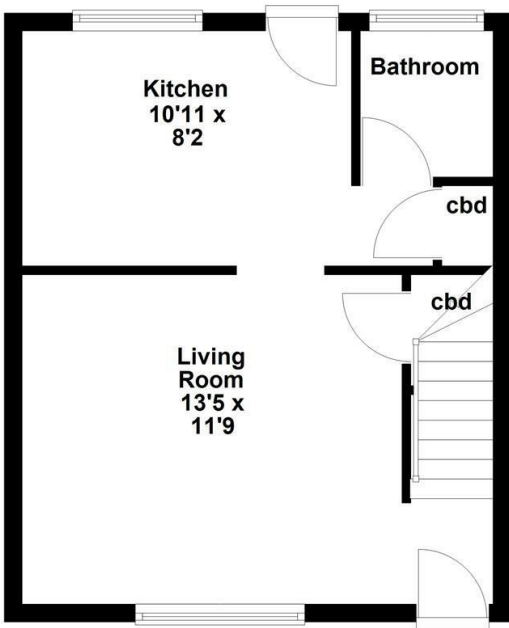


1

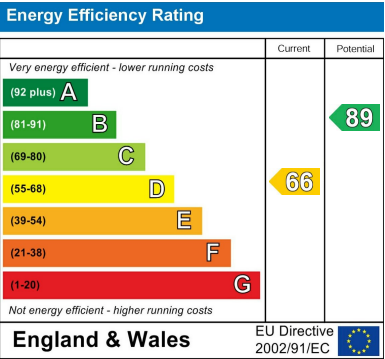
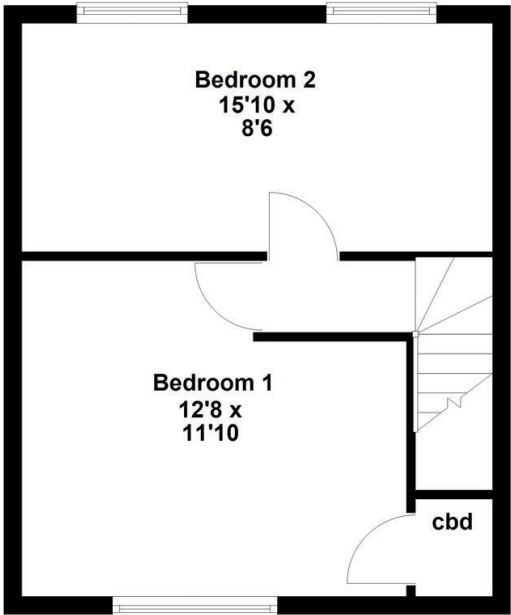


Simpson West

Ground Floor



First Floor



When you buy with Simpson West, you know **you'll be in safe hands**. From the moment you walk through our doors, we'll make you **feel truly welcome**. Our sales consultants and financial advisors will take you through **every step of the process**, offering **free expert advice** along the way, from help choosing the right mortgage and insurance through to finding your conveyancer. And if you need help selling your home too, **with over 20 years of local experience, you can trust us to get you moving**.



**Simpson
West**

Making Every
Journey Personal



01536 202007

info@simpsonwest.co.uk

<https://www.simpsonwest.co.uk/>

64 Corporation Street, Corby, Northants, NN17 1NH